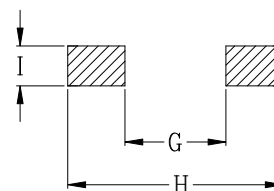
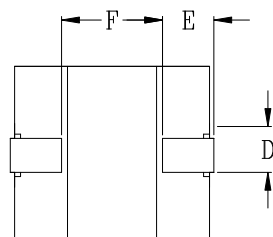
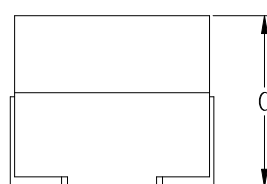
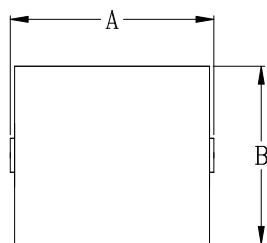




DELTA P/N : HCB7670 Series

Mechanical dimensions



PCB LAYOUT

Dimensions (Unit : mm)

A	7.6 MAX
B	7.4 MAX
C	7.0 MAX
D	1.65
E	2.0
F	3.3
G	2.8
H	7.8
I	2.0

Electrical Characteristics @ 25°C, 100kHz, 1V

Delta P/N	L ¹ (nH)	Li (nH) MIN	DCR (mΩ)	Isat ² (A)			Ir ³ (A)
				25°C	100°C	125°C	
HCB7670-700	70	50	0.50± 6%	108	87	81	49
HCB7670-101	100	72		77	62	57	
HCB7670-121	120	86		66	53	49	
HCB7670-181	180	129		42	34	32	
HCB7670-221	220	158		35	28	26	

1. Tolerance of inductance : ± 10%
2. Isat is the DC current which causes the inductance drop to Li
3. Ir is the DC current which causes the surface temperature of the part increase approximately 40 °C.
4. Operating temperature: -40°C to 125°C (Self-temperature rise included).