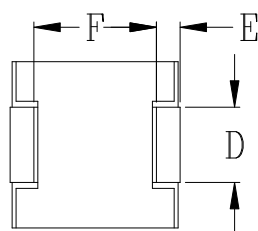
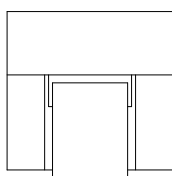
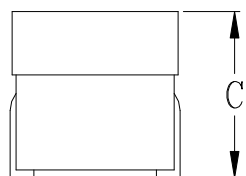
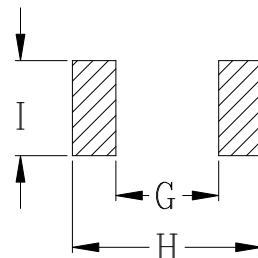
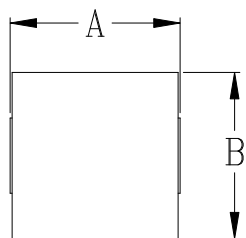




DELTA P/N : HCBS6170 series

Mechanical dimensions



UNIT : mm
 A = 6.1 MAX
 B = 6.0 MAX
 C = 7.0 MAX
 D = 2.2±0.2
 E = 1.0±0.2
 F = 3.9±0.3
 G = 3.4
 H = 6.5
 I = 2.7

Electrical Characteristics @ 25°C, 100kHz, 1V

Delta P/N	L ¹ (nH)	Li (nH)	DCR (mΩ)	Isat ² (A)			Ir ³ (A)
				25°C	100°C	125°C	
HCBS6170-500	50	36	0.09 ± 15%	86	69	64	53
HCBS6170-700	70	50		60	48	45	

1. Tolerance of inductance : ± 20%
2. Isat is the DC current which causes the inductance drop to Li
3. Ir is the DC current which causes the surface temperature of the part increase approximately 40 °C.
4. Operating temperature: -40°C to 125°C (Self-temperature rise included).