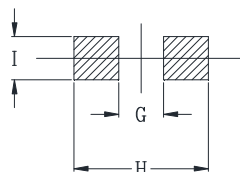
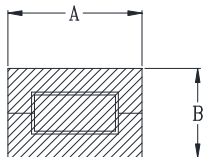


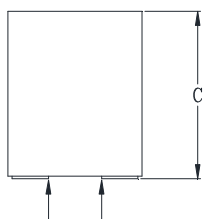


## DELTA P/N : HCUVE966412 Series

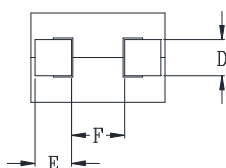
### Mechanical Dimensions



Suggested PWB Layout



DCR Measure Points



UNIT : mm  
 A = 9.6 MAX  
 B = 6.4 MAX  
 C = 12.2 MAX  
 D = 2.6  
 E = 2.6  
 F = 3.8  
 G = 2.8  
 H = 9.5  
 I = 3.1

### Electrical Characteristics @ 25°C, 100kHz, 1V

| Delta P/N       | L<br>(nH)<br>± 10% | Li<br>(nH)<br>MIN | DCR<br>(mΩ)<br>± 7% | Isat <sup>1</sup><br>(A) |       | Ir <sup>2</sup><br>(A) |
|-----------------|--------------------|-------------------|---------------------|--------------------------|-------|------------------------|
|                 |                    |                   |                     | 25°C                     | 100°C |                        |
| HCUVE966412-121 | 120                | 86                | 0.175               | 126                      | 101   | 65                     |
| HCUVE966412-151 | 150                | 108               |                     | 101                      | 81    |                        |
| HCUVE966412-181 | 180                | 130               |                     | 81                       | 66    |                        |
| HCUVE966412-211 | 210                | 151               |                     | 70                       | 56    |                        |
| HCUVE966412-221 | 220                | 158               |                     | 65                       | 52    |                        |
| HCUVE966412-251 | 250                | 180               |                     | 58                       | 46    |                        |
| HCUVE966412-271 | 270                | 194               |                     | 53                       | 42    |                        |
| HCUVE966412-301 | 300                | 216               |                     | 46                       | 37    |                        |
| HCUVE966412-401 | 400                | 288               |                     | 34                       | 27    |                        |
| HCUVE966412-471 | 470                | 338               |                     | 29                       | 23    |                        |

1. Isat is the DC current which causes the inductance drop to Li.
2. Ir is the DC current which causes the surface temperature of the part increase approximately 40 °C .
3. Operating temperature: -40°C to 125°C (Self-temperature rise included).