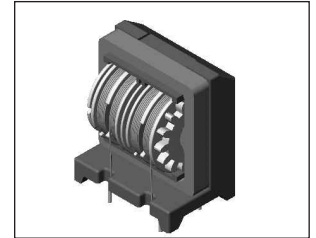
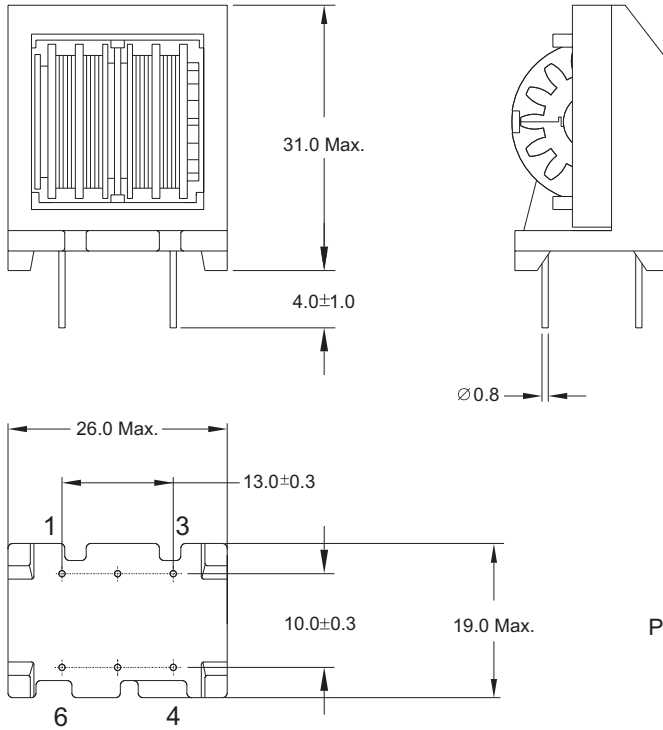


# Common Chokes

## EMI Common-Mode Suppression Inductors

### HFZ24V Type

Mechanical Dimension: Unit: mm



### Electrical Characteristics:

■ AT 25°C, 40KHz/1V Tested:

PART NO.	INDUCTANCE (mH) MIN	DCR (mΩ) MAX	RATED CURRENT (Aac)	TEMPERATURE RISE (°C) MAX
HFZ24V01	78.0	2015	0.3	45
HFZ24V02	68.0	1815	0.4	45
HFZ24V03	54.5	1390	0.5	45
HFZ24V04	35.0	930	0.6	45
HFZ24V05	22.0	550	0.9	45
HFZ24V06	18.0	490	1.0	45
HFZ24V07	14.7	360	1.1	45
HFZ24V08	9.9	250	1.4	45
HFZ24V09	8.1	220	1.5	45
HFZ24V10	6.0	155	1.8	45
HFZ24V11	4.4	115	2.0	45
HFZ24V12	2.9	87	2.4	45

\* WITHSTANDING VOLTAGE BETWEEN L1 & L2 1.5KV 1 MINUTE  
\* GOOD DIFFERENCE IN WINDING L1 & L2 INDUCTANCE



DELTA ELECTRONICS, INC.

(TAOYUAN PLANT CPBG) 252, SAN YING ROAD, KUEISAN INDUSTRIAL ZONE, TAOYUAN SHIEN, 333, TAIWAN, R.O.C.

TEL: 886-3-3591968; FAX: 886-3-3591991

<http://www.deltaww.com>