

INTRODUCTIONS

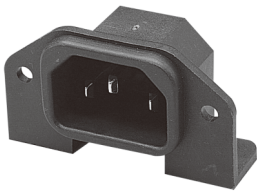
1. Designed to meet globally accepted IEC publication 320 Class 1, that allows users to comply with industry standard in power entry requirement.
2. Connector for cold condition, with pin temperature 70°C max.
3. Nickel-plated brass pins for soldering on PC board.

SPECIFICATIONS

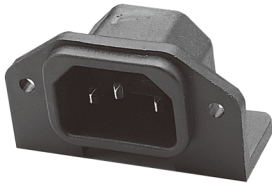
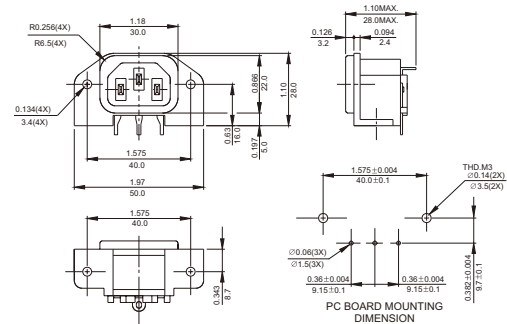
1. Rated voltage: 250VAC, 10A/15A
2. Minimum insulation resistance at 500VDC: 10M OHM
3. Dielectric strength (one minute): 2000VAC between pins
4. Flammability class: UL 94V-0

DELTA PART NUMBER		SK-1010, SK-1019
RATED CURRENT (AT 250VAC)	UL/CSA	15A
	VDE	10A
CONNECTOR TYPE		MALE \triangle

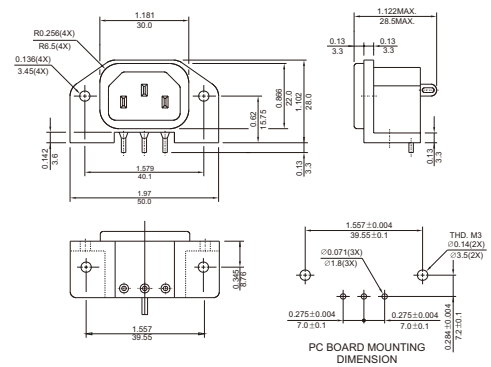
MECHANICAL CONSTRUCTION



SK-1010



SK-1019



UNIT: INCH
mm