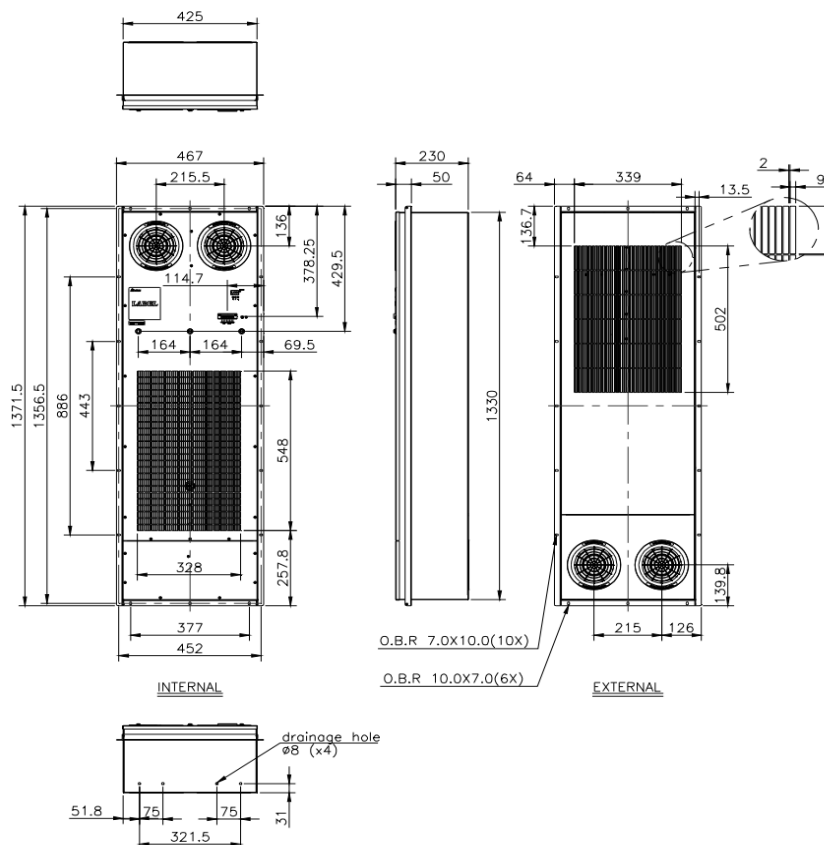


External door mount

HEX200PE series



Dimension drawing



Features

- ◆ IP55 waterproof at external side.
- ◆ Standalone temperature control.
- ◆ RS-485 function (Optional).
- ◆ Dry contact alarm output.
- ◆ Clear LED status indicator.

Design

- ◆ Narrow size.(width only 425mm)
- ◆ Rated voltage at 48V.
- ◆ Built-in smart controller.
- ◆ High efficiency and reliable fan.
- ◆ Easy installation and maintenance.
- ◆ Refrigerant R134a used.

Main feature	Unit	Specification
Dimension (H x W x D) (Doesn't contain flange)	mm (inch)	1330 x 425 x 230 (52.4 x 16.7 x 9.1)
Cooling capacity	W/K	200
Rated voltage	VDC	48
Operating current	A	3.5
Operating voltage range	VDC	40 - 60
Operating temperature range	°C	-20 - +65
Noise (1 meter)	dB-A	64
Weight	Kg (Lb)	42 (92.6)

* Specifications are subject to change without notice.