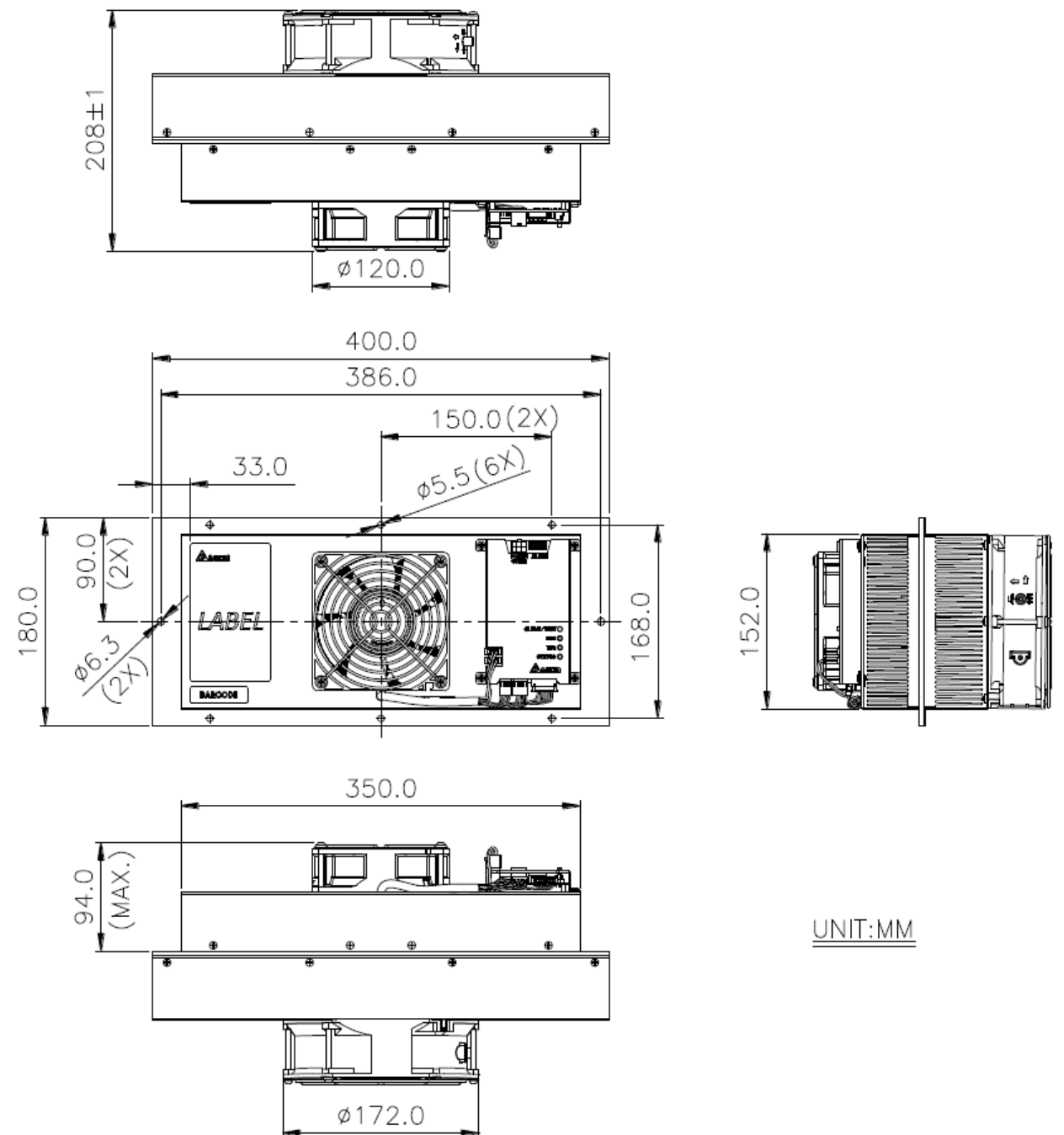


Door mount



HET200PB

Dimension drawing



Features

- ◆ IP55 waterproof at external side.
- ◆ FAN / TEC / Control fail alarm.
- ◆ Clear LED status indicator.
- ◆ Standalone temperature control.
- ◆ High efficiency and reliable fan modules.

Design

- ◆ High efficiency of cooling & heating.
- ◆ Thermal electric cooling module.
- ◆ Rated voltage at 48V.
- ◆ Built-in controller.

Main feature	Unit	Specification
Outline dimension (H x W x D)	mm (inch)	400 x 180 x 208 (15.7 x 7.1 x 8.2)
Weight	Kg	9.0 ± 0.5
Cooling Capacity ($\Delta T = 0^{\circ}\text{C}$)	W	200 (TYP.)
Heating capacity @-40°C	W	225
Rater voltage	VDC	48 (TYP.)
Operating voltage range	VDC	40~56
Actuality Current	A	5.9 (TYP.)
Power Consumption	W	283
Operating temperature	°C	-40~55
Internal airflow rate	CFM	100 (TYP.)
External airflow rate	CFM	120 (TYP.)
Acoustic noise at 1m	dB-A	61.0 (Typ.), 65 (Max)