

Accessory: Rapid Shutdown System (RSS)

Features:

- With PLC, no additional wire needed for control
- Comply with NEC 2014, Article 690.12
- String level rapid shutdown
- Type 4 protection
- Support rack mount or solar module mount
- Support series connection up to 2 sub strings
- Support parallel strings, up to 20A
- With high voltage DC relay, high reliability

RATINGS

| | |
|---------------------------------------|--------------------|
| Delta part number | GPI00010105 |
| Maximum system voltage | 600 Vdc |
| Rated input current | 20 A |
| Rated input operating voltage | 50 Vdc to 550 Vdc |
| Rated input operating current | 0 A to 20 A |
| Fuse Rating | NA |
| Maximum number of controlled circuits | 1 |
| Self-power consumption | <4 W |

GENERAL DATA

| | |
|----------------------------|--|
| Dimensions (W x H x D) | 6.0 x 7.9 x 2.1 in (152 x 201 x 53 mm) |
| Weight | 3.2 lbs (1.45 kg) |
| Cooling | Natural convection |
| DC input/output connectors | MC4 and H4 |
| Enclosure material | Diecast aluminum |
| Operating temperature | -40 °F to 158 °F (-40 °C to 70 °C) |
| Humidity | 0% to 95% |
| Maximum operating altitude | 6,562 ft (2,000 m) above sea level |

STANDARD COMPLIANCE

| | |
|-----------------------------|---|
| Enclosure protection rating | Type 4X |
| Safety | UL 1741, UL 1741 CRD PVRSS, CSA-C22.2 No. 107.1-01 |
| Rapid shutdown | NEC 2014 Article 690.12 |
| EMC | FCC Part 15 Class B |

Accessory: Auto Transfer Switch (ATS)

Features:

- Optional for E series
- Auto grid detection, no additional communication wire needed for control
- Short transferring time (<5.0s)
- Covert from 240 Vac to 120 Vac
- Up to 21 A for each phase
- UL1741, FCC certificated
- Wall-mount with bracket

OUTPUT - AC (LOADS/GRID)

| | |
|---|--------------------|
| Delta part number | GPI00010108 |
| Maximum AC power output | 7680 W |
| AC output voltage Min-Nom-Max (L-L) | 211 – 240 - 264 V |
| Maximum continuous output current @240V | 32 A |
| Charge battery from AC (if allowed) | Yes |
| Typical nighttime power consumption | <5 W |

OUTPUT - AC (BACKUP MODE)

| | |
|---|------------------------------------|
| Rated AC power output | 5000 W |
| Max AC power output - surge | 7680 W for 10sec with balance load |
| AC output voltage Min-Nom-Max (L-N) | 105 – 120 - 132 V |
| AC frequency Min-Nom-Max | 55 - 60 - 65 Hz |
| Max continuous output current per phase @120V | 21 A |
| Split phase imbalance(@rated power) | 21 A |
| Automatic switchover time | <5 s |

GENERAL SPECIFICATION

| | |
|-----------------------------|-----------------------------------|
| Operating temperature range | -13 °F to 131 °F(-25 °C to 55 °C) |
| Humidity | 0% to 95% |
| Maximum operating altitude | 9,843 ft (3,000 m) |
| Installation | Wall mounting |
| Enclosure protection rating | Type 4 |

MECHANICAL DESIGN

| | |
|-------------------------|--|
| Dimensions (W x H x D) | 9.2 x 15 x 5.9 in (232 x 378 x 150 mm) |
| Weight | 30.9 lbs (14 kg) |
| Cooling | Natural convection |
| Compatible wiring gauge | AWG 10 to AWG 6 |
| Certification | UL 1741, CSA-C22.2 No. 107.1-01 |



Accessory: MCI (Middle Circuit Interrupter)

Features:

- Automatic function test upon startup, ensure safety
- Enclosure protection Type 4
- Meet 2017 NEC Article 690.12 Rapid Shutdown
- No installation needed for every PV Module, make better cost performance for PV system
- With PLC, no additional cable needed

INPUT RATINGS

| | |
|-------------------------------|--------------------|
| Delta part number | GPI00010110 |
| Maximum system voltage | 600 Vdc |
| Rated input operating voltage | 6 Vdc to 80 Vdc |
| Number of input circuit | 1 |
| Rated input current | 12 A |

OUTPUT RATINGS

| | |
|-----------------------|------------|
| Rated output current | 12 A |
| Control signal method | PLC signal |

GENERAL DATA

| | |
|-----------------------------|---|
| Dimensions (W x H x D) | 3.8 x 6.5 x 1.1 in (97.3 x 165 x 27.3 mm) |
| Weight | 1.4 lbs (0.64 kg) |
| Cooling | Natural convection |
| DC input/ output connectors | MC4 PV connector |
| Enclosure material | Plastic |
| Operating temperature | -40 °F to 185 °F (-40 °C to 85 °C) |
| Storage temperature | -40 °F to 185 °F (-40 °C to 85 °C) |
| Humidity | 0% to 95% |
| Maximum operating altitude | 9,843 ft (3,000m) above sea level |
| Self power consumption | <3.0 W |
| Warranty | 10 years |

STANDARD COMPLIANCE

| | |
|-----------------------------|---------------------------------|
| Enclosure protection rating | Type 4 |
| Safety | UL 1741, CSA-C22.2 No. 107.1-01 |
| Rapid shutdown | NEC 2017 Article 690.12 |
| EMC | FCC Part 15 Class B |

Accessory: Embedded Revenue Grade Meter



Features:

- Embedded, pre-installed in wiring box
- Meet ANSI C12.20, Class 0.5
- With bi-directional power & energy measurement

GENERAL SPECIFICATION

| | |
|---------------------------|-----------------------|
| Delta part number | 5029901700 |
| Accuracy class | ANSI C12.20 Class 0.5 |
| Rated voltage (Un) | 208 V / 240 V |
| Extended voltage range | 88% to 110% |
| Rated current (In) | 60 A |
| Rated frequency (fn) | 60 Hz |
| Pulse constant (kh) | 1000 impulses /kWh |
| Serial reporting interval | 5 s |

ACCURACY

| | |
|----------------------|-----------------|
| Actual active energy | Within +/- 0.5% |
| Starting current | 0.02 A |
| Creeping current | Less than 5 mA |
| Insulation strength | 6 kV for 1 min |

MECHANICAL DESIGN

| | |
|-----------------------------|--|
| Dimensions (W x H x D) | 2.9 x 2.2 x 1.7 in (73.7 x 55.9 x 43.2 mm) |
| Protection class | Type 1 |
| Operation temperature range | -40 °F to 176 °F (-40 °C to 80 °C) |
| Humidity | 0% to 95% non-condensing |

Accessory: Energy Meter



Features:

- Optional for E series
- Up to 2 meters with different ID for storage system
- DIN rail installation in main panel
- With 2 CTs
- Suitable to US 208/240 V, LN voltage 120V
- UL 1741 certified
- Meet ANSI C12.20, Class 1.0

GENERAL SPECIFICATION

| | |
|--------------------------------|-------------------------|
| Delta part number | 5020532500 |
| Accuracy class | ANSI C12.20 Class 1.0 |
| Rated voltage(L1N and L2N) | 120 V |
| Extended voltage range | 88% to 110% |
| Rated current(In) | With two 200 A rated CT |
| A frequency | 60 Hz |
| Serial reporting interval | 5 s |
| Meter communication interfaces | RS485 |
| Response time | ≤1 s |

ACCURACY

| | |
|-----------------------|-------|
| CT rated RMS current | 200 A |
| 1%-100% of CT current | 1% |

MECHANICAL SPEC

| | |
|-----------------------------|---|
| Dimensions (W x H x D) | 2.2 x 3.5 x 2.1 in (54.0 x87.8 x 52.0 mm) |
| Weight | 0.45 lbs (0.2 kg) |
| Protection class | Type 1 |
| Operation temperature range | -22 °F to 131 °F (-30 °C to 55 °C) |
| Mounting type | DIN-Rail, 1.38 in (35 mm) |
| Certification | UL 1741 |

Accessory: Ethernet & WiFi Communication Module

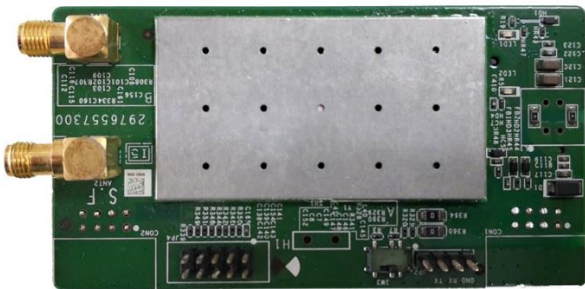


Features:

- Embedded, pre-installed in wiring box
- Support 802.11 b/g/n, 2.4 GHz
- FCC certificated

| WiFi SPEC | |
|-----------------------------|---|
| Delta part number | 5042106700 |
| Standard | 2.4 GHz 802.11 b/g/n compatible |
| Security | 802.11i (WPA, WPA2) |
| Working mode | Client |
| Data rate | Up to 50 Mbps (Theoretical value) |
| Antenna | SMA, support one transmit and one receive path |
| Ethernet SPEC | |
| Standard | IEEE 802.3 for 10 BaseT IEEE 802.3u for 100 BaseTX |
| Data rate | 10/100 Mbps, auto MDI/MDIX |
| MECHANICAL SPEC | |
| Dimensions (W x H) | 1.6 x 3.4 in (40.6 x 86.4 mm) |
| Weight | 0.045 lbs (0.02 kg) |
| Operating temperature range | -4 °F to 158 °F (-20 °C to 70 °C) |
| Humidity | 5% to 95% non-condensing |
| Certification | FCC |

Accessory: WiFi & 3G/4G cellular CAT-M Communication Module



Features:

- Embedded, pre-installed in wiring box
- Support 802.11 b/g/n, 2.4 GHz
- FCC certificated

CELLULAR NETWORKS

| | |
|-------------|---|
| Frequencies | Cat M1: LTE FDD: B2/B4/B12/B1 EGPRS:3850/900/1800/1900 Mhz |
| Speed | Cat M1:Max. 300K bps (DL), Max. 375 Kbps (UL) |

WiFi SPEC

| | |
|--------------|--|
| Standard | 2.4 GHz 802.11b/g/n compatible |
| Security | 802.11i (WPA, WPA2) |
| Working mode | Client |
| Data rate | Up to 150 Mbps (Theoretical value) |
| Antenna | Support one transmit and one receive path (1T1R) |

GENERAL SPEC

| | |
|-----------------------------|------------------------------------|
| Dimensions (W x H) | 1.6 x 3.4 in (40.6 x 86.4 mm) |
| Operation temperature range | -40 °F to 158 °F (-40 °C to 70 °C) |
| Humidity | 5% to 95% non-condensing |
| Antenna | SMA |
| Certification | FCC |

Delta Electronics (Americas), Ltd.

46101 Fremont Blvd, Fremont, CA 94538
 Sales Email: Inverter.Sales@deltaww.com
 Support Email: Inverter.Support@deltaww.com
 Sales Hotline: +1-877-440-5851 or +1-626-369-8021
 Support Hotline: +1-877-442-4832
 Support (Intl.): +1-626-369-8019 Monday to Friday from 6am to 6pm PST (apart from Holidays)

