

# Delta Lithium-ion Battery

## 48V Application

### TBM48V60P0

#### Long service life battery ideal for 48V telecom applications

Delta TBM48V60P0 battery is an excellent energy source with a long service life for 48V applications such as telecom and datacenter for power backup. It is a compact package of high energy density to save space and weight.

Its maintenance-free design couples with the intelligent remote monitoring function and can eliminate on-site maintenance efforts and save considerable operational costs and then contributes to lower TCO (Total Cost of Ownership) compared with conventional batteries.

For safe and reliable operation, Delta's advanced BMS (Battery Management System) can protect the function to protect the battery against abnormal conditions, like over-temperature, over-charging, and over-discharging. BMS can also make the battery operations more optimal to serve over long term.

#### Special Features

##### High Safety

- Certification Compliance: UN38.3, UL1973, CE, IEC62619
- Advanced BMS to protect battery module from abnormal conditions

##### Retrofit Application

- Direct replacement of Lead-acid battery pack

##### Excellent Manageability

- Front-end panel access
- User-Friendly signal indication for the status of battery system
- Allowed for multi-units or multi-sites remote management

Order P/N: TBM050B01301Axx



\*Product outlook subject to change without notice

#### Product Specification

Nominal Voltage	48.1 V (NCM system)
Minimum Capacity	55 Ah (cut off voltage 42.0V)
Dimension (mm)	429 (L) x 430 (W) x 118 (H) *1
Waterproof Level	IP20 class function
Weight	Approx. 27Kg
Certifications Compliance: Cell	UN38.3, IEC62619
Pack	UN38.3, IEC62619 EN61000-6-1, EN61000-6-3 CNS15387:5.2.4&5.3.1
Service Life @ 25°C	~ 5 years*2
Operating Temperature	Charge: 0°C to +45°C Discharge: -20°C to +45°C
Interface	CAN BUS & RS485
Max Discharge Current (A)	100A
Max Charging Current (A)	50A
Charging Voltage (V)	53.3V
Working Voltage Range (V)	42.0V to 53.3V
Discharging Cut-off Voltage (V)	42.0V

\*1) Not included the handling ear

\*2) SOC range is 90% to 10%. SOC means "State of Charge".



# Delta Lithium-ion Battery 48V Application

## TBM48V60P0

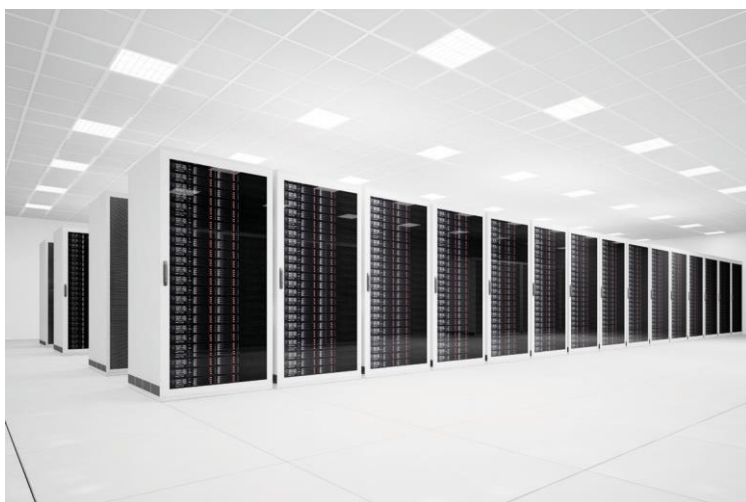
### Applications

- Direct Replacement for Conventional 48V Lead-acid Battery System
- Telecom Back-up Power (Pole mount cabinet / Stationary cabinet)
- UPS System for Datacenter and Server Networking System

#### ▪ Base Station



#### ▪ Data Center



Delta Electronics, Inc.  
Energy Storage Device BD  
EMail: [ESDBD@deltaww.com](mailto:ESDBD@deltaww.com)  
[www.deltaww.com](http://www.deltaww.com)

DOC. NO. DELTA-ESD-B-TBM48V60P0-E-20180611-06