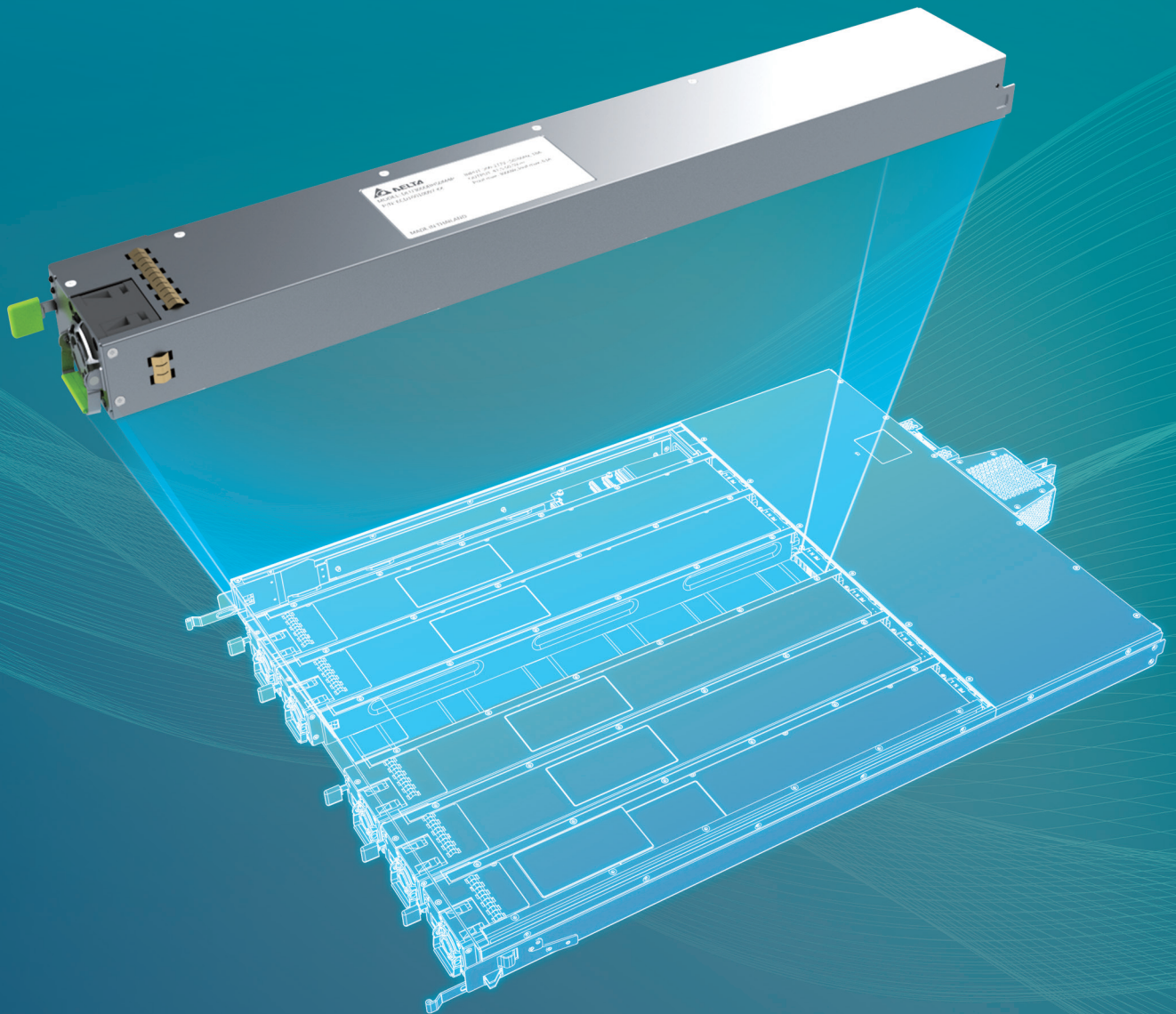


# ORV3 - HPR 5.5 kW PSU

Powering your data center.



# 5.5 kW PSU

## Key Features:

- High efficiency 97.5% (peak)
- High line wide range input (200 V / 277 V)
- Parallel operation
- Hot pluggable
- Droop & active shallow I2C current share
- Boot load function
- Customizable on request

## Applications:

- Highly efficient ACDC 5.5kW rectifier for datacenter power system
- Based on OCP ORV3 -HPR
- AI Servers

	5.5 kW PSU
Dimensions (H x W x D)	1.57 x 2.9 x 25.2 inch (40.0 x 73.5 x 640 mm)
Weight	9.92 lbs (4.5 kg)
Max. Output Power	5,500 W
Output Voltage	48 / 50 V <sub>DC</sub>
Output Current	110 A
Input Voltage Range	180 V <sub>AC</sub> - 305 V <sub>AC</sub> 50 / 60 Hz
Efficiency	>97.5 @50% Load
Cooling	Fan Cooled
Connector	FCI Multi-Beam
Safety Standards	IEC 60950-1 (CB) / UL 62368-2 (CAN / CSA)
EMC Standards	Class A
Communication	I <sup>2</sup> C & RS485



More Information

### Delta Energy Systems GmbH

Coesterweg 45, 59494 Soest, Germany  
TEL: +49-2921-987-0 FAX: +49-2921-987-601  
email : CDBUSales@deltaww.com

[www.deltaww.com](http://www.deltaww.com)

### Delta Electronics (Americas) Ltd., Global Operations - USA

46101 Fremont Boulevard, Fremont, CA 94538, U.S.A.  
TEL : +1-510-668-5100 FAX: +1-510-668-0680