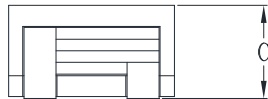
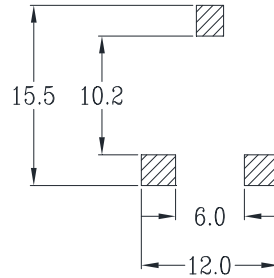
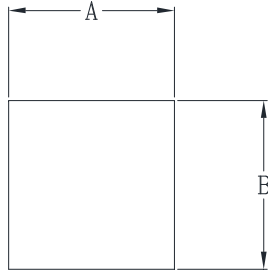


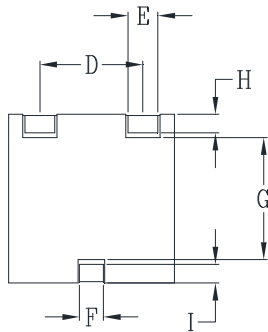


## DELTA P/N : HMP1580 Series

### Mechanical dimensions



Suggested PWB Layout



UNIT : mm

A = 14.5±0.4

B = 14.5±0.4

C = 7.5±0.5

D = 9.0

E = 2.6±0.2

F = 2.1±0.2

G = 10.5

H = 1.8±0.2

I = 1.5±0.2

### Electrical Characteristics: @25°C, 100kHz, 1V

Delta P/N	L <sup>1</sup> (uH)	Li (uH) TYP.	DCR (mΩ) MAX	Isat <sup>2</sup> (A)		Ir <sup>3</sup> (A)
				25°C	100°C	
HMP1580-0R7	0.7	0.5	1.22	55	45	54
HMP1580-1R5	1.5	1.1	1.5	30	25	29

1. Tolerance of inductance : ± 15%
2. Isat is the DC current which causes the inductance drop to Li.
3. Ir is the DC current which causes the surface temperature of the part increase less than 45 °C.
4. Operating temperature: -40°C to 150°C (Self-temperature rise included).