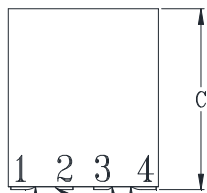
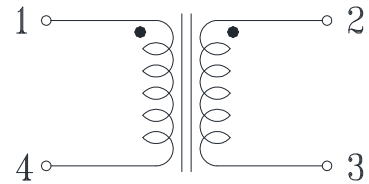
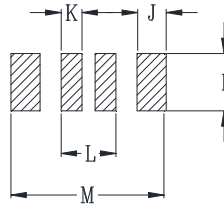
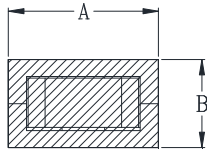




DELTA P/N : TLM106012F Series

Mechanical Dimensions

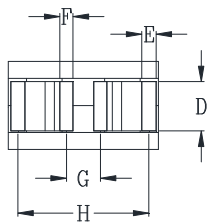


Suggested PWB Layout

Schematic

DCR_S Measure Points
DCR_P Measure Points

UNIT : mm
 A = 10.0 MAX
 B = 6.0 MAX
 C = 12.0 MAX
 D = 3.0
 E = 1.1
 F = 0.85
 G = 2.3
 H = 8.35
 I = 3.5
 J = 1.9
 K = 1.35
 L = 3.55
 M = 10.05



Electrical Characteristics @ 25°C, 100kHz, 1V

Delta P/N	L (nH) ± 15%	Li (nH) MIN	DCR_P (mΩ) ± 10%	DCR_S (mΩ) ± 10%	Isat ¹ (A)			Ir_P ² (A)	Ir_S ² (A)
					25°C	100°C	125°C		
TLM106012F-101	100	70	0.16	0.38	109	93	87	68	35
TLM106012F-121	120	84			88	75	70		
TLM106012F-151	150	105			69	59	55		

1. Isat is the DC current which causes the inductance drop to Li.
2. Ir is the DC current which causes the surface temperature of the part increase approximately 40 °C.
3. Operating temperature: -40°C to 125°C (Self-temperature rise included).