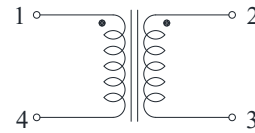
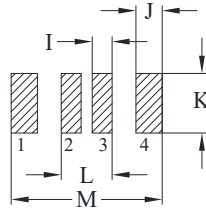
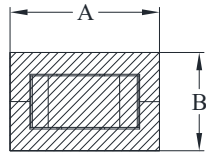


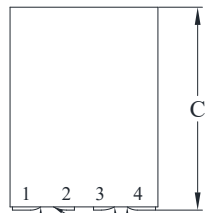


DELTA P/N: TLM966413F Series

Mechanical Dimensions & Schematic

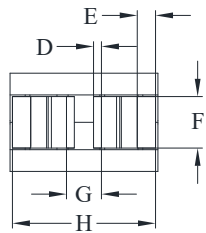


Schematic



Suggested PWB Layout

DCR PIN 1-4 Measure Points
DCR PIN 2-3 Measure Points



UNIT : mm

A = 9.60 MAX.

B = 6.40 MAX.

C = 13.20 MAX.

D = 0.50

E = 1.15

F = 3.20

G = 2.20

H = 9.00

I = 1.25

J = 1.65

K = 3.70

L = 3.20

M = 9.50



Electrical Characteristics @ 25°C, 100kHz, 1V

Delta P/N	L (nH) ± 15%	Li (nH) MIN	DCR (mΩ) ± 10%		Isat ¹ (A)			Ir ² (A)	
			1-4	2-3	25°C	100°C	125°C	1-4	2-3
TLM966413F-111	110	70	0.16	0.41	111	94	89	67	42
TLM966413F-121	120	77			102	87	82		
TLM966413F-151	150	96			81	69	65		

1. Isat is the DC current which causes the inductance drop to Li.
2. Ir is the DC current which causes the surface temperature of the part increase approximately 40 °C.
3. Operating temperature: -40°C to 125°C (Self-temperature rise included).