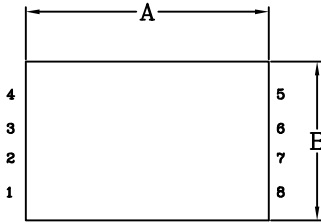




SPECIFICATION FOR APPROVAL

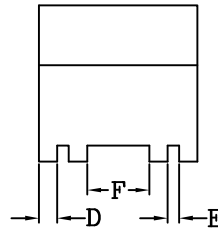
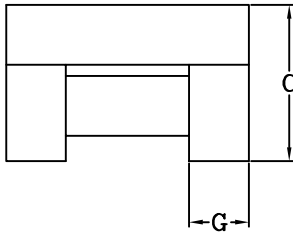
Customer Part No.: Delta Part No.: LC521 Part Name: LAN Chip Transformer (for Single Channel)	Rev.: D <div style="display: flex; justify-content: space-around; align-items: center;"> <div style="border: 1px solid black; border-radius: 50%; padding: 2px; text-align: center;">RoHS COMPLIANT</div> <div style="border: 1px solid black; border-radius: 50%; padding: 2px; text-align: center;">HF</div> </div>
---	--

1. Mechanical Dimension:

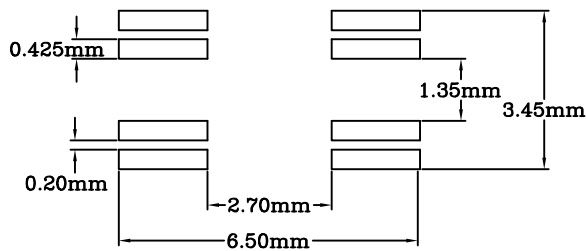


UNIT: mm/inch

- A = 5.28±0.30/0.208±0.012
- B = 3.45±0.30/0.136±0.012
- C = 3.40±0.30/0.134±0.012
- D = 0.435±0.10/0.017±0.004
- E = 0.18±0.10/0.007±0.004
- F = 1.35±0.10/0.053±0.004
- G = 1.34±0.10/0.053±0.004



1-1. Recommended PCB Layout:



(Component Side)

Suggested PCB Layout

Drawn by <i>L.R.-CHEN</i>	Electronic by <i>Mark. Lai</i>	Mechanical by <i>GD</i>	QE by <div style="border: 1px solid black; height: 40px; width: 100%;"></div>	Approved by <i>clark</i> <i>CK. Lin</i>
----------------------------------	---------------------------------------	--------------------------------	--	---

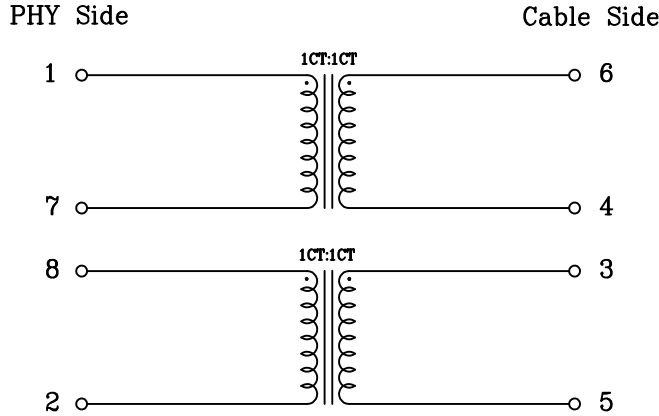
20240322



SPECIFICATION FOR APPROVAL

Customer Part No.: Delta Part No.: LC521 Part Name: LAN Chip Transformer (for Single Channel)	Rev.: D <div style="display: flex; justify-content: space-around; align-items: center;"> <div style="border: 1px solid black; border-radius: 50%; padding: 2px; text-align: center;"> RoHS COMPLIANT </div> <div style="border: 1px solid black; border-radius: 50%; padding: 2px; text-align: center;"> HF </div> </div>
---	--

2. Circuit Schematic:



3. Electrical Characteristics:(Temp.: 20°C~30°C . Humidity: 40%RH~75%RH)

3-1. Insertion Loss:

1-100 MHz	-0.8dB MAX.
100-125 MHz	-1.2dB MAX.

3-2. Return Loss:

1-40 MHz	-18dB MIN.
40-100 MHz	-16dB MIN.
100-150 MHz	-15dB MIN.
150-200 MHz	-13dB MIN.
200-250 MHz	-10dB MIN.

3-3. Open Circuit Inductance: @100KHz, 0.1Vrms 8mA DC Bias

(1-2), Shorted (7-8): 140uH MIN.
 (5-6), Shorted (3-4): 140uH MIN.

3-4. Turns Ratio: @100KHz

PHY Side:Cable Side= 1CT:1CT±3%

3-5. Hi-POT Test: @60Hz

PHY Side to Cable Side: 1500Vrms, 60Sec

- * RoHS Compliant
- * Compliant With Halogen-Free
- * Operate Temperature Range: 0°C~70°C
- * Storage Temperature Range: -40°C~85°C