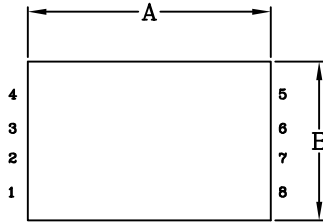




SPECIFICATION FOR APPROVAL

Customer Part No.: Delta Part No.: LC541 Part Name: LAN Chip Transformer (for Single Channel)	Rev.: C <div style="display: flex; justify-content: space-around; align-items: center;"> <div style="border: 1px solid black; border-radius: 50%; padding: 2px; font-size: 8px;">RoHS COMPLIANT</div> <div style="border: 1px solid black; border-radius: 50%; padding: 2px; font-size: 8px;">HF</div> </div>
---	--

1. Mechanical Dimension:



UNIT: mm/inch

A = 5.28±0.30/0.208±0.012

B = 3.45±0.30/0.136±0.012

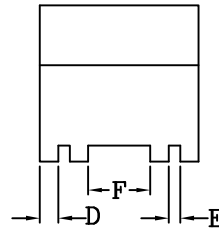
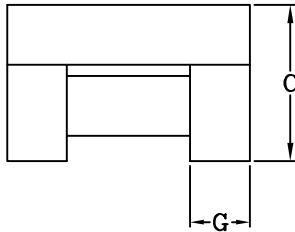
C = 3.40±0.30/0.134±0.012

D = 0.435±0.10/0.017±0.004

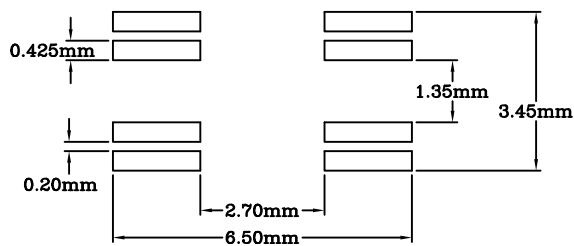
E = 0.18±0.10/0.007±0.004

F = 1.35±0.10/0.053±0.004

G = 1.34±0.10/0.053±0.004



1-1. Recommended PCB Layout:



(Component Side)
Suggested PCB Layout

Drawn by L.R.-CHEN	Electronic by Mark. Lai	Mechanical by GD	QE by <div style="border: 1px solid black; height: 40px; width: 100%;"></div>	Approved by clark CK. Lin
---------------------------	--------------------------------	-------------------------	--	-------------------------------------

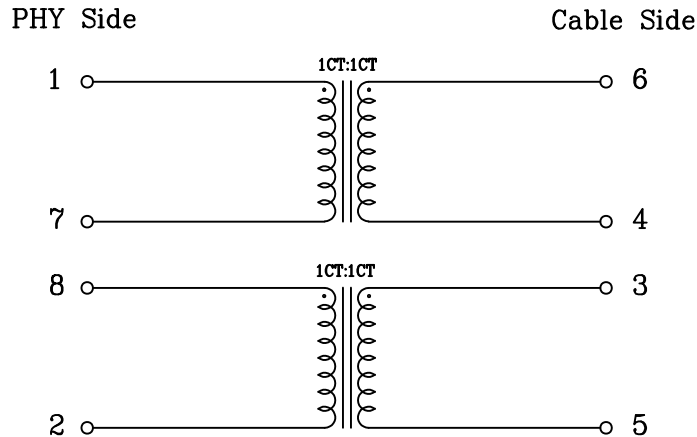
20240322



SPECIFICATION FOR APPROVAL

Customer Part No.: Delta Part No.: LC541 Part Name: LAN Chip Transformer (for Single Channel)	Rev.: C <div style="display: flex; justify-content: space-around; align-items: center;"> <div style="border: 1px solid black; border-radius: 50%; padding: 2px 5px; font-size: 8px;">RoHS COMPLIANT</div> <div style="border: 1px solid black; border-radius: 50%; padding: 2px 5px; font-size: 8px;">HF</div> </div>
---	--

2. Circuit Schematic:



3. Electrical Characteristics: (Temp.: 20°C~30°C . Humidity: 40%RH~75%RH)

3-1. Insertion Loss:

1-100 MHz -0.8dB MAX.
 100-250 MHz -1.2dB MAX.

3-2. Return Loss:

1-40 MHz -18dB MIN.
 40-100 MHz -16dB MIN.
 100-150 MHz -15dB MIN.
 150-200 MHz -13dB MIN.
 200-250 MHz -12dB MIN.

3-3. Open Circuit Inductance: @100KHz, 0.1Vrms 8mA DC Bias

(1-2), Shorted (7-8): 140uH MIN.
 (5-6), Shorted (3-4): 140uH MIN.

3-4. Turns Ratio: @100KHz

PHY Side:Cable Side= 1CT:1CT±3%

3-5. Hi-POT Test: @60Hz

PHY Side to Cable Side: 1500Vrms, 60Sec

- * RoHS Compliant
- * Compliant With Halogen-Free
- * Operate Temperature Range: 0°C~70°C
- * Storage Temperature Range: -40°C~85°C