



SPECIFICATION FOR APPROVAL

TO: _____

PART NO.		REV.	DELTA SAMPLE ISSUE NO	
PART NAME	EMI FILTER		DELTA MODEL	05RPG5
ORDER P/N.	05RPG5		SAMPLE ISSUE DATE	

1. ELECTRICAL CHARACTERISTICS:

1-1. VOLTAGE RATING 75V DC MAX.

1-2. CURRENT RATING

A. AT 75VDC 5A Max.

1-3. HIPOT RATING (FOR ONE MINUTE)

A. LINE TO GROUND 1500VDC

B. LINE TO LINE 100VDC

1-4. TEMPERATURE RANGE: -25 TO +100 DEGREE C

1-5. MINIMUM INSERTION LOSS IN dB: (AT 50 OHM SYSTEM)

FREQ. MHz	.01	.05	.10	.15	.50	1.0	5.0	10	30
COM. MODE dB	0	3	4	8	30	40	40	35	20
DIF. MODE dB	10	20	25	30	35	35	35	30	30

1-6. SAFETY



REPORT BY	CHECKED BY	APPROVED BY		
			REV.	

DELTA ELECTRONICS, INC.

186 RUEY KUANG ROAD, NEIHU, TAIPEI 114,
TAIWAN, R.O.C.
TEL:886-2-87972088 FAX:886-2-87972120

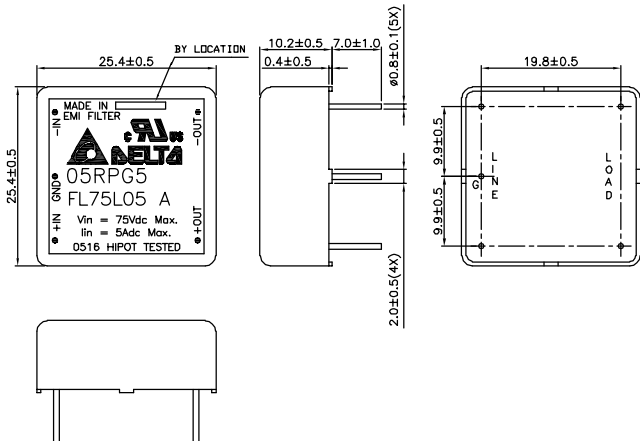


SPECIFICATION FOR APPROVAL

TO: _____

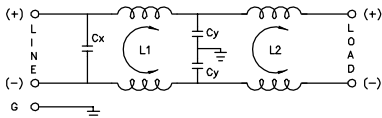
PART NO.		REV.	DELTA SAMPLE ISSUE NO
PART NAME	EMI FILTER	DELTA MODEL	05RPG5
ORDER P./N.	05RPG5	SAMPLE ISSUE DATE	

2. PHYSICAL DIMENSIONS:



3. SCHEMATIC:

UNIT: mm



L1: 0.20mH
L2: 0.50mH
Cx: 4.7uF
Cy: 4700pF

REPORT BY	CHECKED BY	APPROVED BY	UNLESS OTHERWISE SPECIFIED DIMENSION TOLERANCE		
			DCEIMALS .X±	.XX±	ANGLES±
			REV.		

DELTA ELECTRONICS, INC.

186 RUEY KUANG ROAD, NEIHU, TAIPEI 114,
TAIWAN, R.O.C.
TEL:886-2-87972088 FAX:886-2-87972120