



## SPECIFICATION FOR APPROVAL

TO: \_\_\_\_\_

PART NO.		REV.		DELTA SAMPLE ISSUE NO	
PART NAME	EMI FILTER			DELTA MODEL	07RPG5
ORDER P/N.	07RPG5			SAMPLE ISSUE DATE	

## 1. ELECTRICAL CHARACTERISTICS:

1-1. VOLTAGE RATING ..... 75V DC MAX.

## 1-2. CURRENT RATING

A. AT 75VDC ..... 7A Max.

## 1-3. HIPOT RATING (FOR ONE MINUTE)

A. LINE TO GROUND ..... 1500VDC

B. LINE TO LINE ..... 100VDC

1-4. TEMPERATURE RANGE: -40 TO +100 DEGREE C

1-5. MINIMUM INSERTION LOSS IN dB: (AT 50 OHM SYSTEM)

FREQ. MHZ	.01	.05	.10	.15	.50	1.0	5.0	10	30
COM. MODE dB	1	5	7	7	30	40	35	30	25
DIF. MODE dB	10	15	15	50	50	45	40	35	30

1-6. SAFETY:



REPORT BY	CHECKED BY	APPROVED BY		
			REV.	

DELTA ELECTRONICS, INC.

186 RUEY KUANG ROAD, NEIHU, TAIPEI 114,  
TAIWAN, R.O.C.  
TEL:886-2-87972088 FAX:886-2-87972120

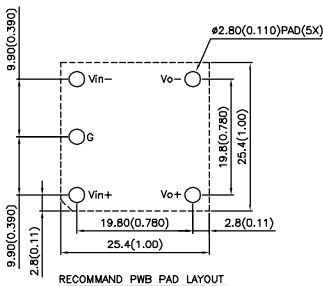
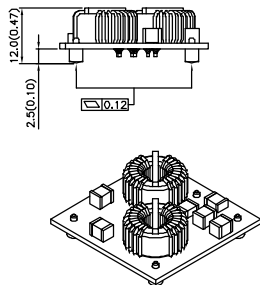
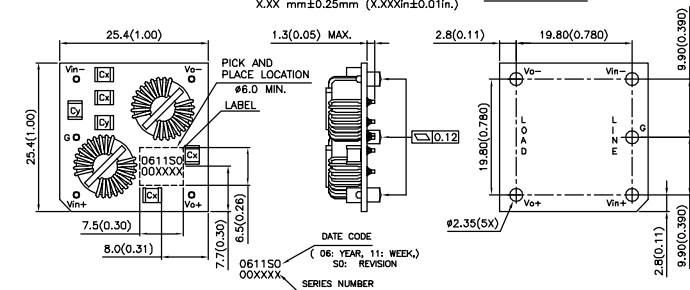
PART NO.		REV.		DELTA SAMPLE ISSUE NO	
PART NAME	EMI FILTER		DELTA MODEL	07RPG5	
ORDER P/N.	07RPG5		SAMPLE ISSUE DATE		

## 2. PHYSICAL DIMENSIONS:

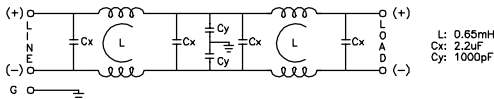
## NOTES:

 TOLERANCES: X.X mm $\pm$ 0.5mm (X.XX in. $\pm$ 0.02in.)  
 X.XX mm $\pm$ 0.25mm (X.XXXin $\pm$ 0.01in.)

UNIT: mm(INCHES)



## 3. SCHEMATIC:



REPORT BY	CHECKED BY	APPROVED BY	UNLESS OTHERWISE SPECIFIED DIMENSION TOLERANCE DECIMALS .X $\pm$ .XX $\pm$ ANGLES $\pm$
			REV.