



SPECIFICATION FOR APPROVAL

TO: _____

PART NO.		REV.		DELTA SAMPLE ISSUE NO	
PART NAME	EMI FILTER		DELTA MODEL		10RDG5
ORDER P/N.	10RDG5		SAMPLE ISSUE DATE		

1. ELECTRICAL CHARACTERISTICS:

1-1. VOLTAGE RATING 75V DC MAX.

1-2. CURRENT RATING

A. AT 75VDC 10A Max.

1-3. HIPOT RATING (FOR ONE MINUTE)

A. LINE TO GROUND 1500VDC

B. LINE TO LINE 100VDC

1-4. TEMPERATURE RANGE: -40 TO +100 DEGREE C

1-5. MINIMUM INSERTION LOSS IN dB: (AT 50 OHM SYSTEM)

FREQ. MHz	.01	.05	.10	.15	.50	1.0	5.0	10	30
COM. MODE dB	/	2	6	8	15	20	40	30	20
DIF. MODE dB	1	15	18	20	40	20	20	25	20

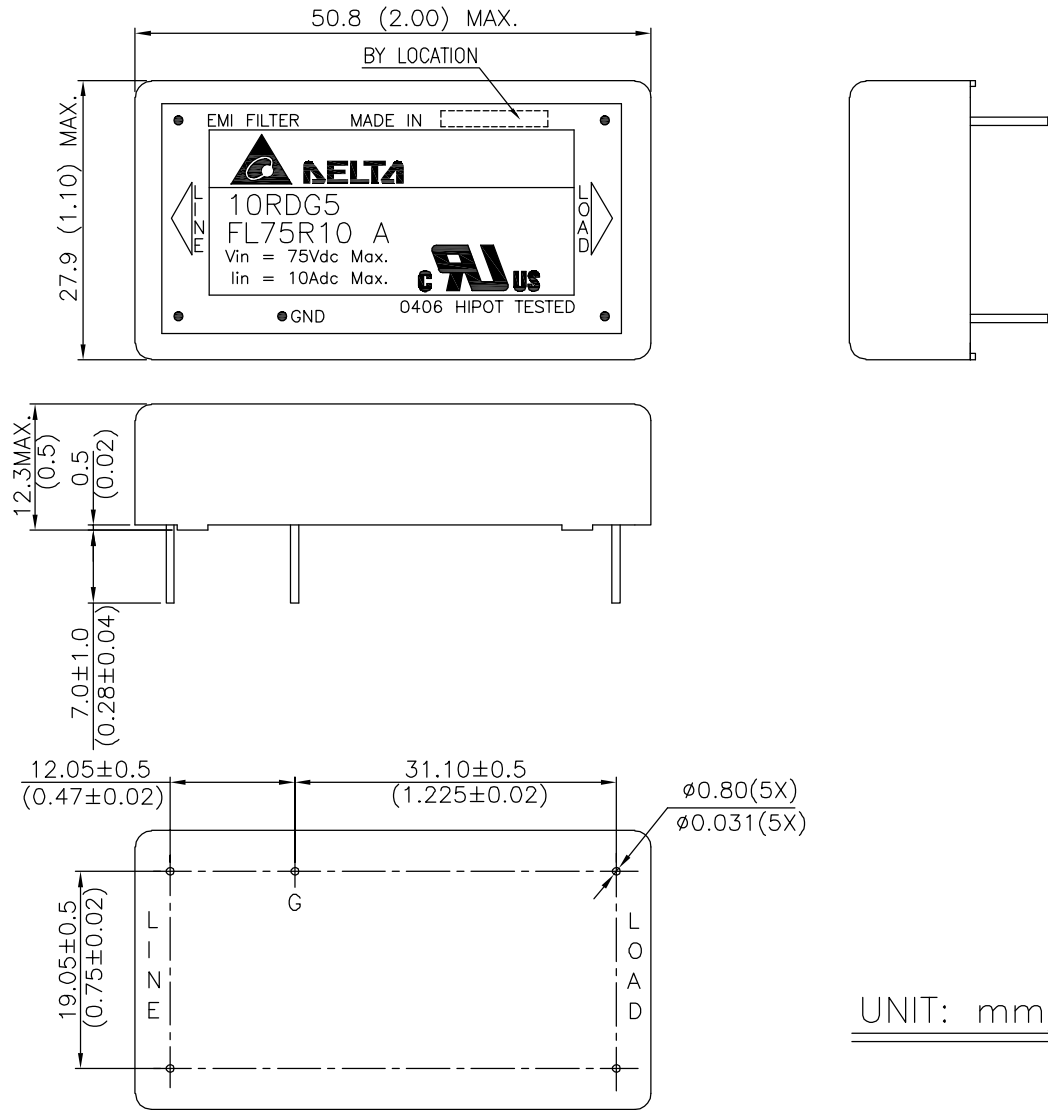
1-6. SAFETY



REPORT BY	CHECKED BY	APPROVED BY		
			REV.S00	

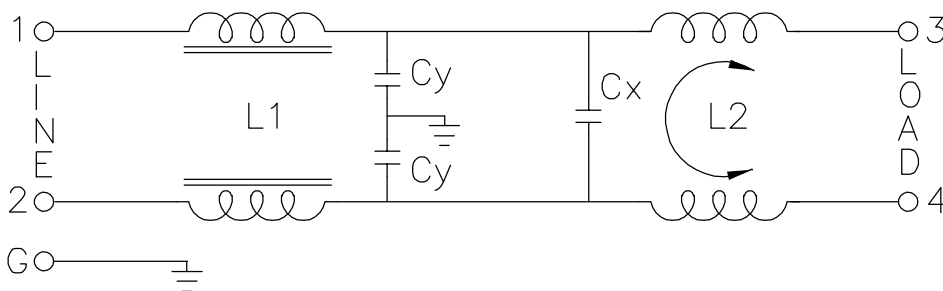
PART NO.		REV.		DELTA SAMPLE ISSUE NO	
PART NAME	EMI FILTER		DELTA MODEL	10RDG5	
ORDER P/N.	10RDG5		SAMPLE ISSUE DATE		

2. PHYSICAL DIMENSIONS:



UNIT: mm/inch

3. SCHEMATIC:



L1: 5.2uH
 L2: 0.4mH
 Cx: 1.0uF
 Cy: 4700pF

REPORT BY	CHECKED BY	APPROVED BY	UNLESS OTHERWISE SPECIFIED DIMENSION TOLERANCE		
			DCEIMALS .X±	.XX±	ANGLES±
			REV.		