



## PV INVERTER

Three-Phase / M100\_210

### Features

- Excellent performance with max. 99% efficiency
- Toggle latch, lightweight and ground mount design
- SUB\_1G and bluetooth for quick commission via APP
- PC and APP tools enable plant-level commission
- Smart cooling system ensures high yield and performance
- Optional type I+II SPD surge protection



Solar  
Power



Commercial  
Building



Industrial



Utility



**DELTA**

# Product Overview

Delta's M100\_210 three-phase PV inverter features 99% efficiency and an MPP tracker that can help plant operators to maximize energy yield and profitability.

Besides, M100\_210 supports SUB\_1G which can realize wireless communication in solar plant and make construction and maintenance easier. The toggle latch, ground mount design, and plant-level commission tools ensure quick and simple installation while optimizing the operation efficiency of PV plants.



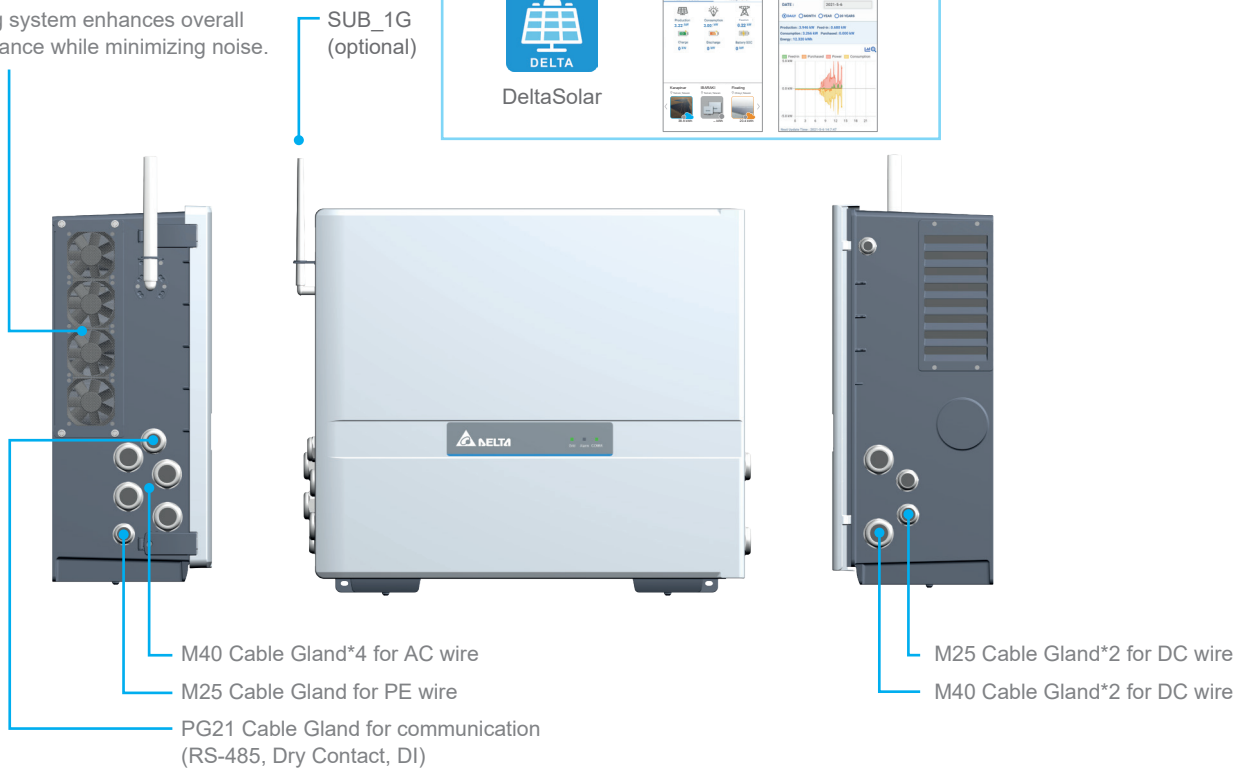
# Feature Highlights

## Swappable Fan Kit

Smart cooling system enhances overall plant performance while minimizing noise.

## Wireless Communication APP

DeltaSolar APP provides quick on-site commission and total plant monitoring solution.



## Fast Installation

The M100\_210 supports wall mount installation and ground mount installation, which can shorten installation times and save on the cost for additional racks.

### Wall Mount



### Ground Mount

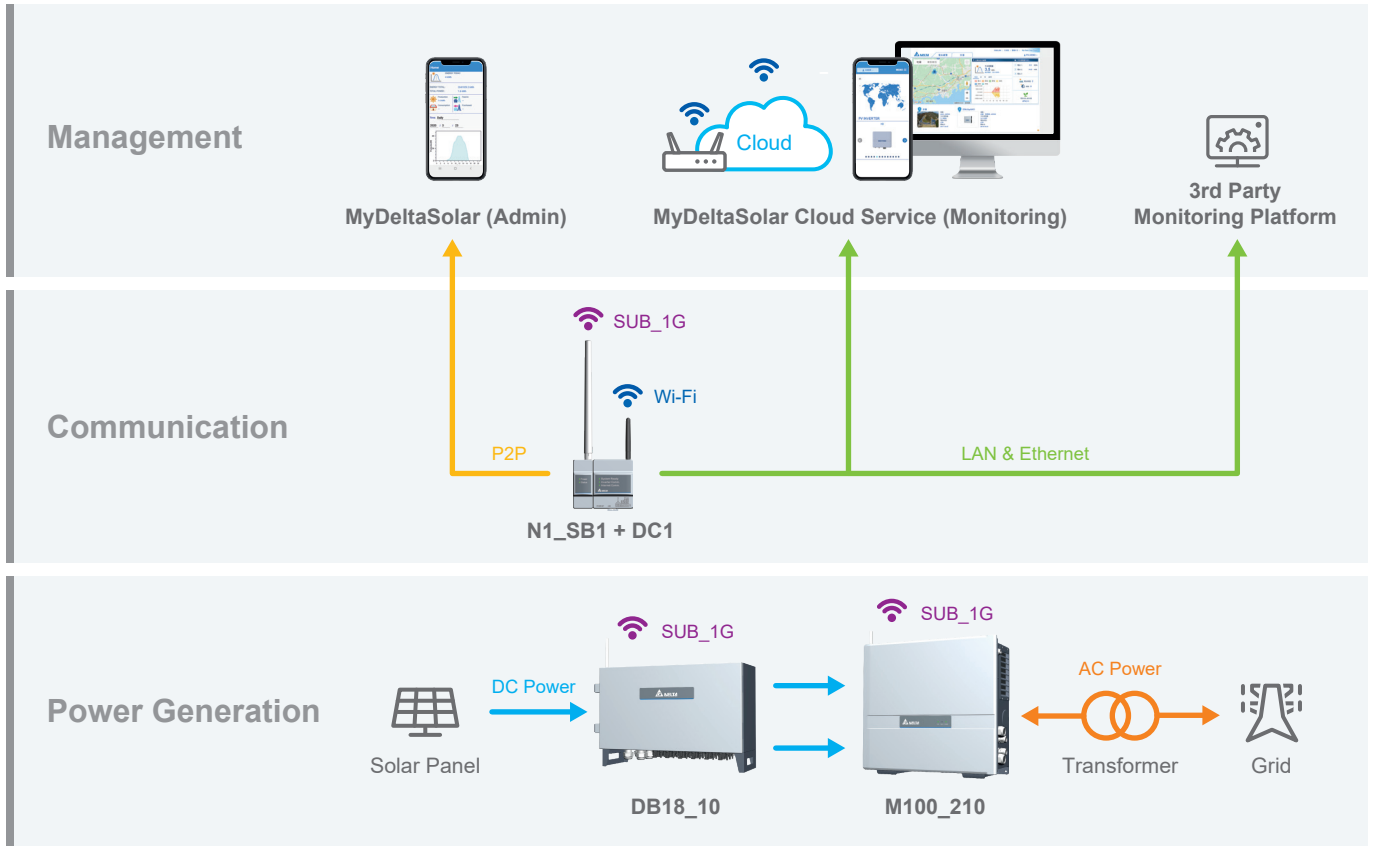


## Toggle Latch Design

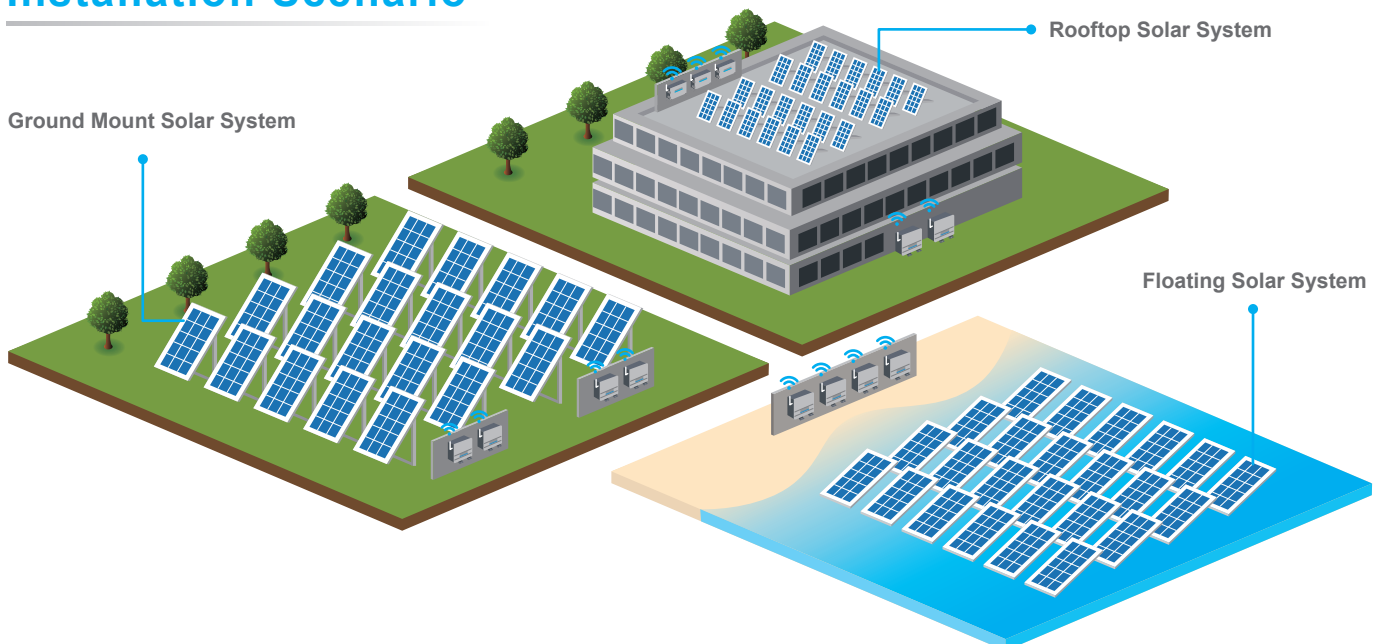
The toggle latch design saves considerable time for maintenance and minimizes the risk of water intrusion.



## System Architecture



## Installation Scenario



# Specifications

<b>Model Number</b>	<b>M100_210</b>			
<b>DC Input</b>				
Max. Input Voltage	1100 V			
Operating Voltage Range	570 - 1000 V			
MPP Voltage Range @ AC 400V	570 - 860 V*			
Start Voltage	610 V			
Nominal DC Voltage	570 V			
MPP Tracker	1			
Max. Operating Current	185 A			
Max. Short Current Capability (Isc)	250 A			
DC Connection Type	Terminal bus bar, Max. 185 mm <sup>2</sup> Cu and Al conductor			
Surge Protection	Type II SPD (built-in) ; Type I+II SPD (optional)			
<b>AC Output</b>				
Max. Output Power	110 kVA			
Max. Output Current	160 A			
Output Power	100 kW @ 50°C ; 110 kW @ 40°C			
Nominal AC Voltage	AC 400 V , 3Ø3W or 3Ø4W			
AC Voltage Range	80% to 130% of nominal AC voltage			
Operating Frequency Range	50 / 60 ±5 Hz			
Power Factor	0.8 ind ~ 0.8 cap (adjustable)			
Night Time Reactive Power	60 kVAR			
Surge Protection	Type II SPD (built-in) ; Type I+II SPD (optional)			
T.H.D	< 3% at Rated output current			
AC Connection Type	Terminal block, Max. 185 mm <sup>2</sup> Cu and Al conductor			
Night Time Consumption	< 3.5 W			
<b>Efficiency</b>				
Peak Efficiency	99.0 %			
Euro Efficiency	98.7 %			
<b>Communication</b>				
Communication Port	RS-485, Bluetooth (built-in) ; SUB_1G (optional)			
Communication Protocol	Delta, Sunspec			
Indicator	LED (Alarm, Grid, COMM.)			
<b>Certificate</b>				
Grid Support	IEC 62109-1/-2 IEC 61727	IEC 62116 IEC 61683	EN 61000-6-2 EN 61000-6-3	VPC
<b>General Information</b>				
Protection	Arc fault detection, Leakage current protection, Insulation resistance detection			
Features	Night time Anti-PID, String current monitoring, IV curve scanning, Night time reactive power			
Operating Elevation	< 4000 m			
Operating Temperature	-25 to 60°C, > 50°C smart de-rating			
Protection Level	IP66			
Cooling	Smart fan air cooling			
Noise	65.2 dBA @1m, Amb25°C			
Dimension (W x H x D)	699 x 629 x 264 mm			
Weight	67 kg			

\* Ambient < 15°C: 570~860V ; Ambient < 30°C: 570~840V ; Ambient < 40°C: 570~760V

\* Specifications are subject to change without prior notice.

## Delta Electronics, Inc.

39 Section 2 Huandong Road, Shanhua District,  
Tainan City 74144, Taiwan (R.O.C.)

TEL : +886 6 505-6565

FAX : +886 6 505-1919

info@deltaww.com

