



PV INVERTER

Three-Phase / M100A_280

Features

- Excellent performance with max. 98.7% efficiency
- Toggle latch and fast installation design reduce installation efforts
- Built-in DC switches, SPD, String monitoring and Arc fault detection
- Bluetooth for quick commission via APP
- PC and APP tools enable plant-level commission
- Smart cooling system ensures high yield and performance
- IP66 and lightweight design



Rooftop



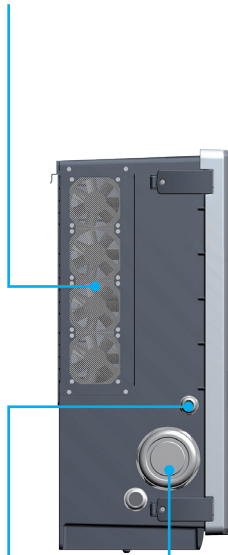
Ground
Mounted



Feature Highlights

Swappable Fan Kit

Smart cooling system enhances overall plant performance while minimizing noise.

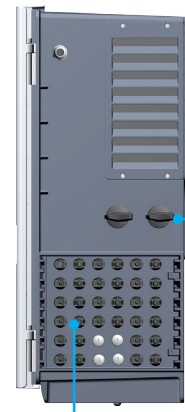


AC Output

Cable Gland for Communication
(RS-485 / Dry Contact / DI)

Wireless Communication APP

DeltaSolar APP provides quick on-site commission and total plant monitoring solution.

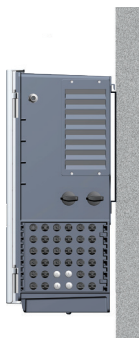


DC Input (H4) DC Switch
x 16 strings

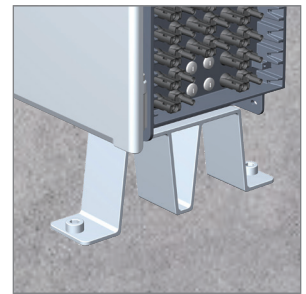
Fast Installation

The M100A_280 supports wall mount installation and ground mount installation, which can shorten installation times and save on the cost for additional racks.

Wall Mount



Ground Mount



Toggle Latch Design

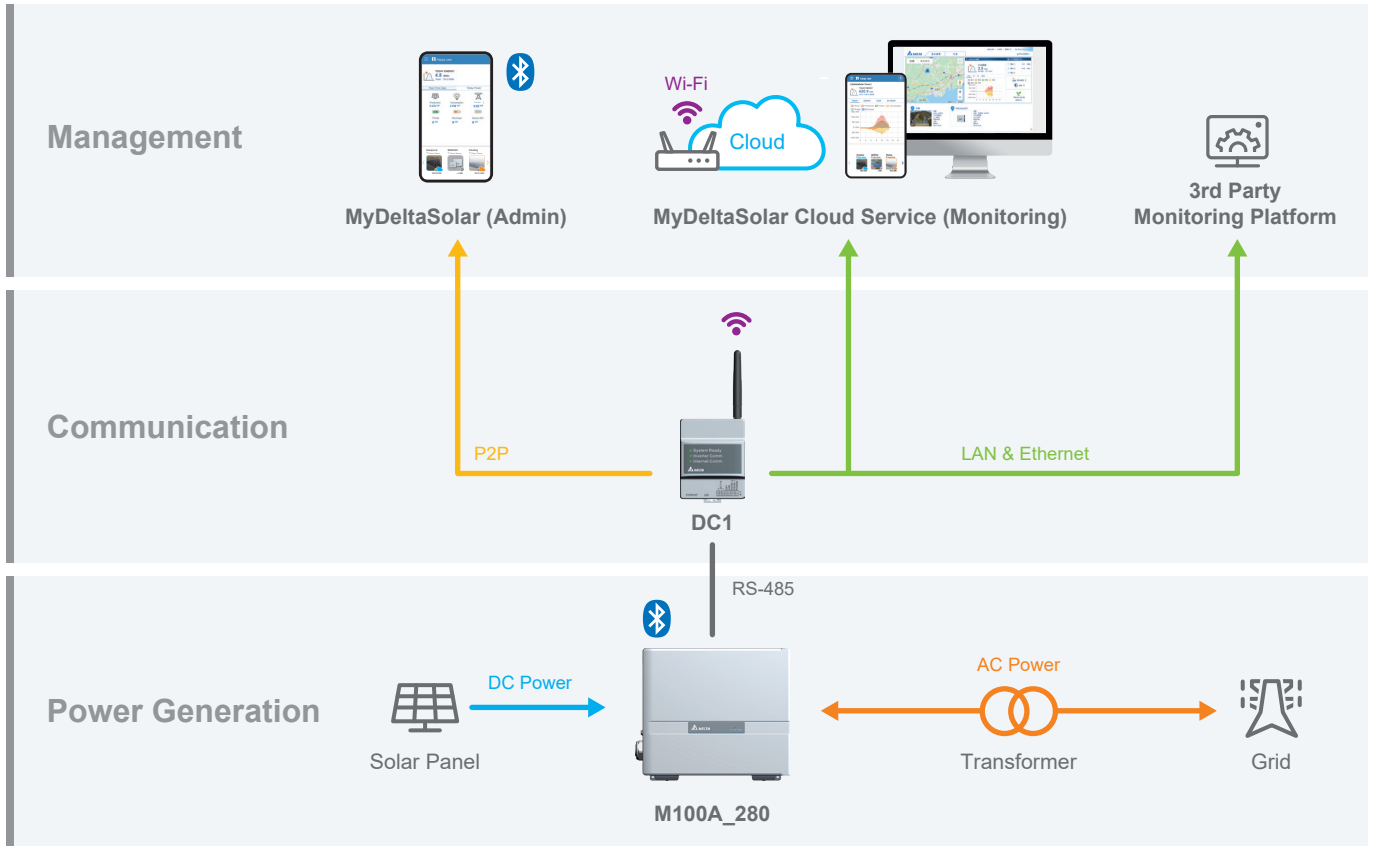
The toggle latch design saves considerable time for maintenance and minimizes the risk of water intrusion.



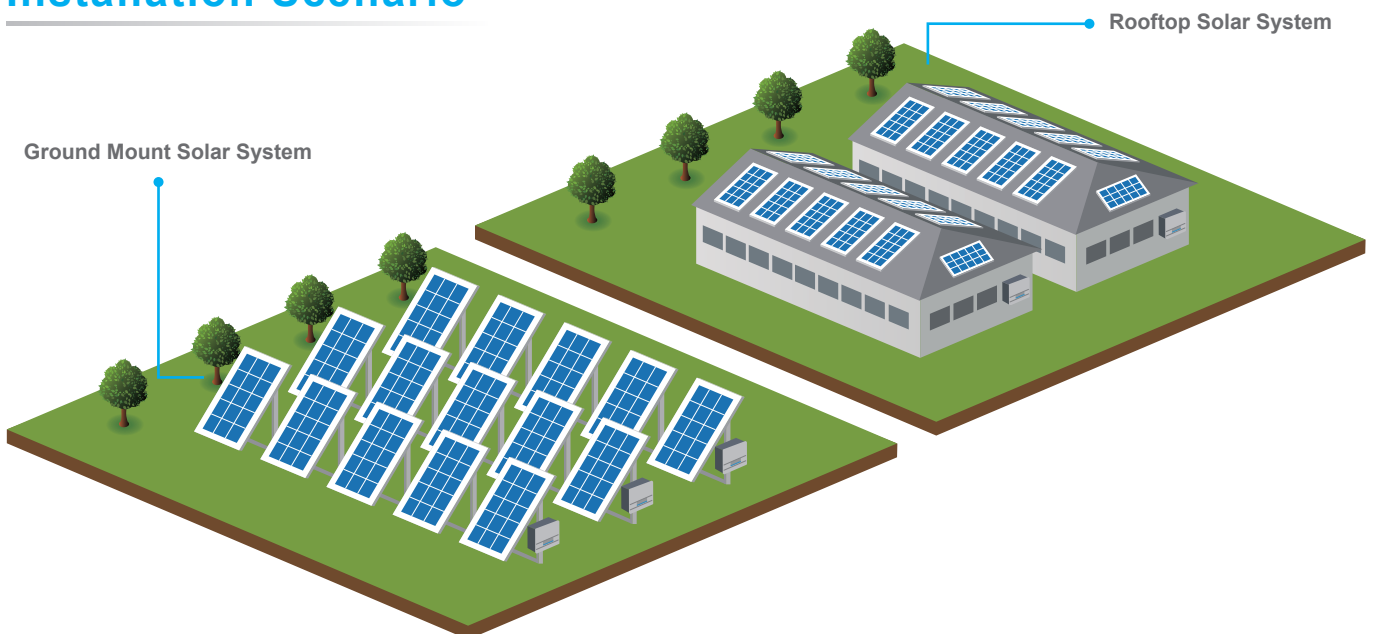
Product Overview

- Delta M100A_280 is able to reach 98.7% peak efficiency, 98.4% Euro-efficiency over converting PV energy.
- Eight MPPT design with wide MPP voltage range (520~840V) can maximize customer's revenue.

System Architecture



Installation Scenario



Specifications

Model Number	M100A_280				
DC Input					
Max. Input Voltage	1100 V				
Operating Voltage Range	200 - 1000 V				
MPP Voltage Range for nominal power	520 - 840 V				
Nominal DC Voltage	610 V @ AC 400 V ; 710 V @ AC 480 V				
MPP Tracker	8				
Max. Operating Current	30 A / MPPT				
Max. Short Current Capability (Isc)	50 A / MPPT				
DC Connection Type	16 pairs of Amphenol H4 DC Connector				
Surge Protection	Type II SPD (built-in) ; Type I+II SPD (optional)				
DC Switch	2 pcs				
AC Output					
Max. Output Power	110 kVA				
Max. Output Current	168 A @ AC 400 V ; 133 A @ AC 480 V				
Output Power	100 kW @ 50°C ; 110 kW @ 40°C (480 V) 100 kW @ 40°C ; 110 kW @ 35°C (400 V)				
Nominal AC Voltage	AC 400 V / 480 V , 3Ø3W or 3Ø4W				
AC Voltage Range	80% to 120% of nominal AC voltage				
Operating Frequency Range	50 / 60 Hz ± 5 Hz				
Power Factor	0.8 ind - 0.8 cap				
Night Time Reactive Power	66 kVAR				
Surge Protection	Type II SPD				
T.H.D	< 3% at Rated output current				
AC Connection Type	Screw Clamp Terminal supports, Max. 185 mm ² , Cu and Al conductor				
Night Time Consumption	< 3.5 W				
Efficiency					
Peak Efficiency	98.7 %				
Euro Efficiency	98.4 %				
Communication					
Communication Port	Bluetooth, RS-485				
Communication Protocol	Delta, Sunspec				
Indicator	LED (Alarm, Grid, COMM.)				
Certificate					
Grid Support	IEC-62109-1/-2 VDE-ARN 4110 EN50549-2 PEA/MEA VPC				
General Information					
Protection	Arc fault detection, DC reverse polarity detection, leakage current protection, Insulation resistance detection				
Features	Night time Anti-PID, String current monitoring, IV curve scanning, Night time reactive power				
Operating Elevation	< 4000 m				
Operating Temperature	-25 to 60°C, > 40°C smart de-rating				
Protection	IP66				
Cooling	Smart fan air cooling				
Noise	65.2 dBA @ 1m, Amb 25°C				
Dimension (W x H x D)	699 x 629 x 264 mm				
Weight	77 kg				

* Specifications are subject to change without prior notice.

Delta Electronics, Inc.

39 Section 2 Huandong Road, Shanhua District,
Tainan City 74144, Taiwan (R.O.C.)

TEL : +886 6 505-6565

FAX : +886 6 505-1919

info@deltaww.com

