

# Register



MyDeltaSolar

## Download App



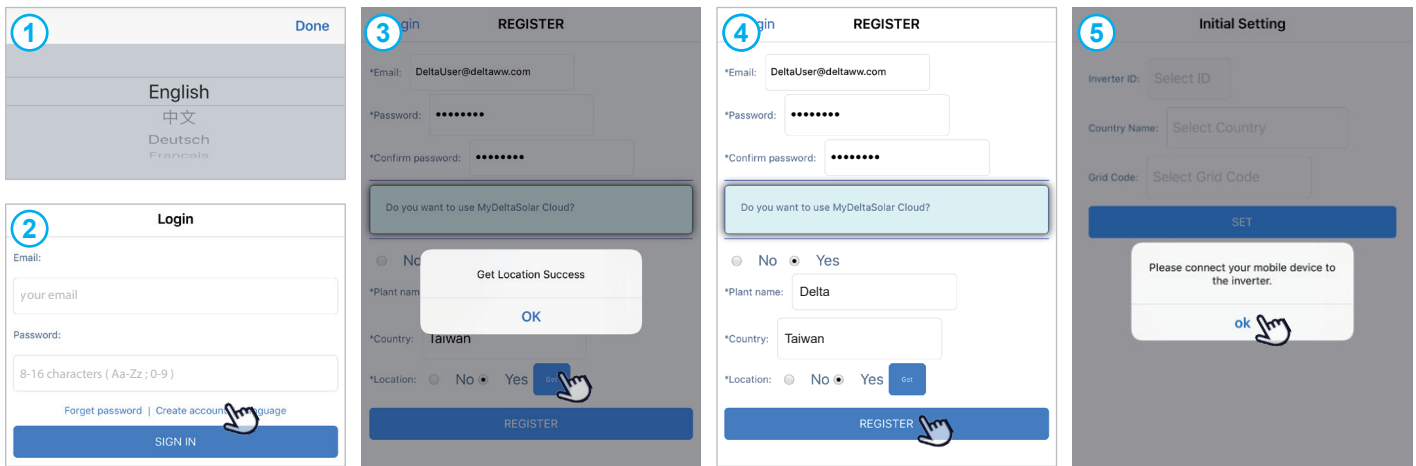
- iOS system:** Please search “MyDeltaSolar” in App store.
- Android system:** Please search “MyDeltaSolar” in Google Play.
- QR Code:** Please scan the QR code to MyDeltaSolar cloud.

## Recommended Inverter Setting Procedure

Turn on AC power → Turn on DC power after completing all steps → Inverter will connect to grid.

## User & Plant Register for Cloud

1. Start APP, select the language first.
2. Click “Create account” to do register.
3. Fill in personal information and select “Yes” to use cloud, then click “Get” button and allow APP to use you location information to get GPS location. (pw: 8~16 characters, should contain English character and digit)
4. Click “REGISTER” to proceed.
5. The APP will ask to connect the inverter.



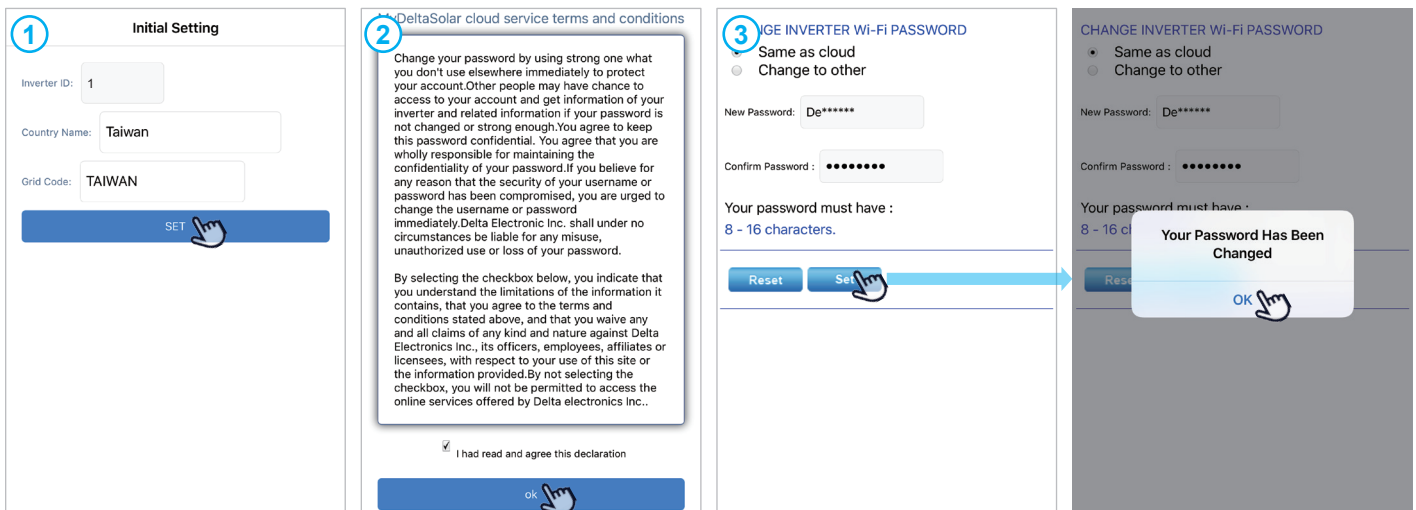
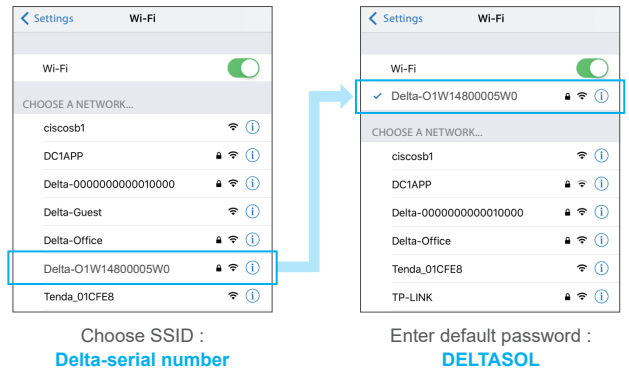
## Connect to Inverter and Setting

The setting procedure for connecting to inverter with mobile device:

1. Search and choose inverter’s SSID (Delta-serial number).  
e.g. SSID: Delta-O1W14800005W0.  
If the inverter is connected to the cloud, SSID: Delta-O1W14800005W0-ID (1~30).
2. Enter the default password “DELTA SOL” to get inverter connected.

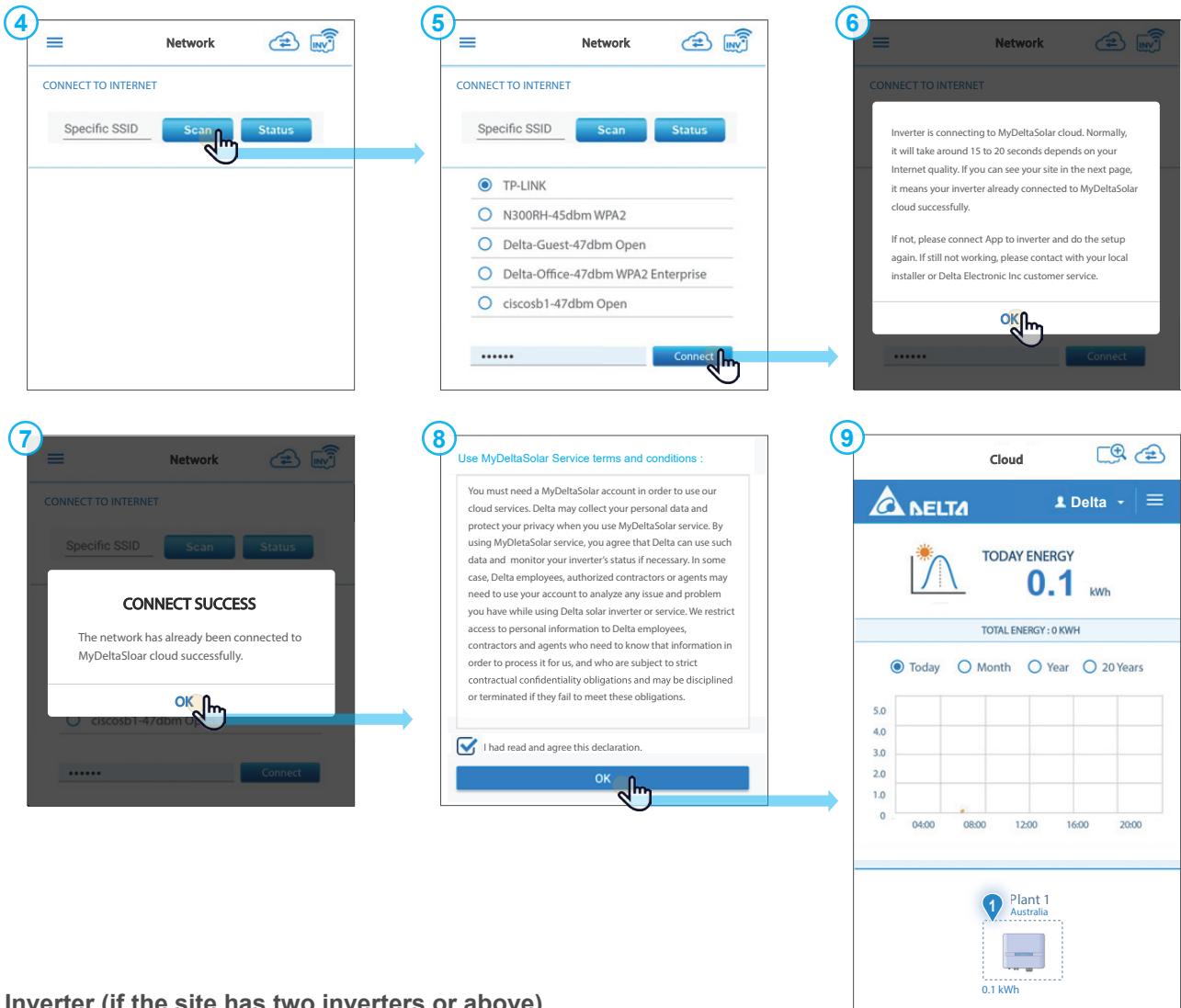
## Initial Setting -> Terms -> Change Wi-Fi password

1. Please set inverter ID and grid code.(if installer have done this part just click “Set” to next step)
2. Users need to click on the check box before clicking “OK” button.
3. Change inverter’s password. (The APP fill in user’s password automatically.)




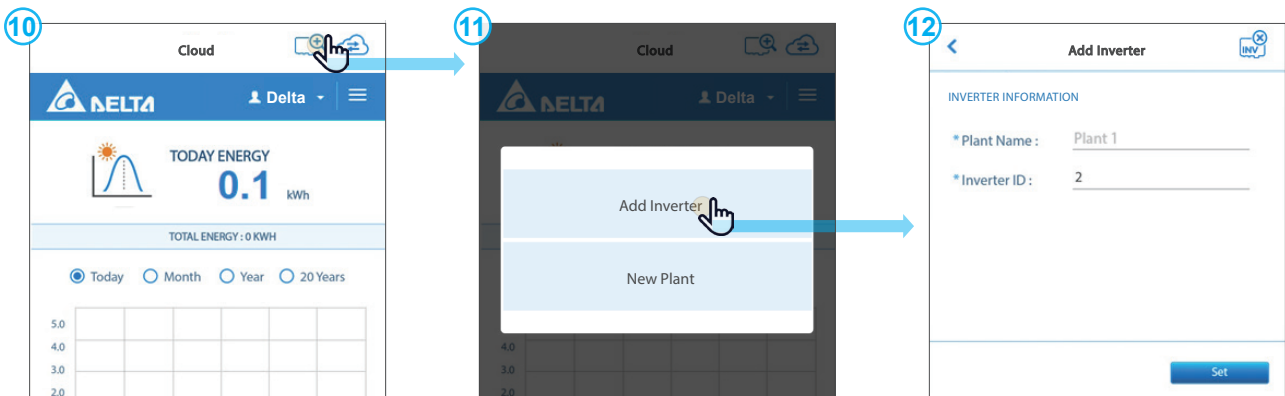
## Scan External Network -> Choose Available Wi-Fi Network -> Connect to Cloud

4. Users have to click on the scan button.
5. After click "Scan" button, then choose an available Wi-Fi network.  
Please fill in the Wi-Fi's password, then click "Connect" button.
6. After click "OK" button, inverter is connecting to MyDeltaSolar cloud. (It will takes around 15 to 20 seconds)
7. When "CONNCECT SUCCESS" shows up then click "OK" to proceed.
8. Check and agree the declaration then Click "OK" to proceed.
9. Cloud data upload is only refreshed every 5 minutes.



## Add Inverter (if the site has two inverters or above)

10. please click  to add inverter.
11. Pop-up message box with add inverter and new plant.  
Then please click "Add Inverter" column to "Add Inverter" page.
12. After click "Set" button, and search/ choose inverters' SSID (refer to "Connect to Inverter And Setting").



\*Please kindly note, if you want to change installer settings. You have to apply an installer account, please contact your local dealer or Delta.