



PV INVERTER

Three-Phase / M60U_260

Features

- Excellent performance with max. 98.5% efficiency
- Toggle latch and fast installation design reduce installation efforts
- Built in type II SPD
- Bluetooth for quick commission via APP
- PC and APP tools enable plant-level commission
- Smart cooling system ensures high yield and performance
- NEMA 4X and lightweight design



Rooftop



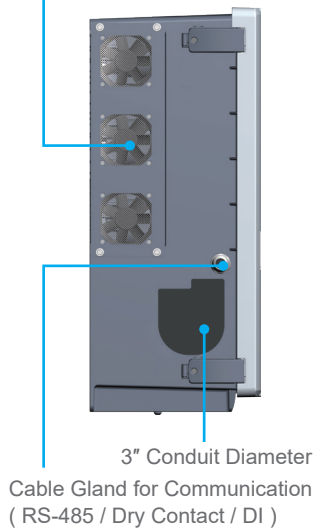
Ground
Mounted



Feature Highlights

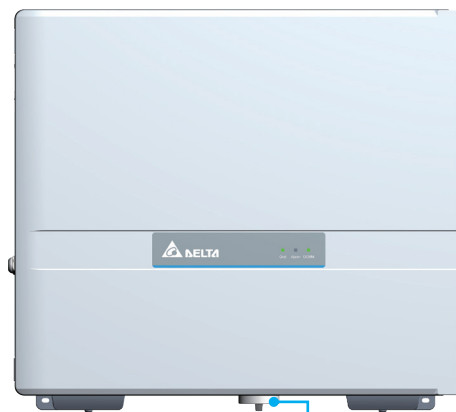
Swappable Fan Kit

Smart cooling system enhances overall plant performance while minimizing noise.



Wireless Communication APP

DeltaSolar APP provides quick on-site commission and total plant monitoring solution.



AC Switch

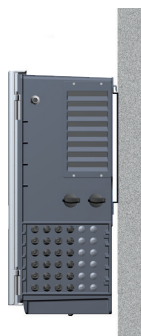


DC Input (H4) x 12 strings
DC Switch

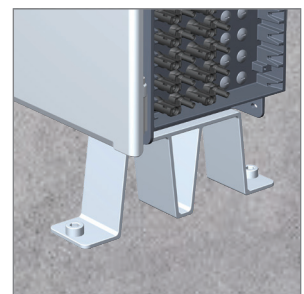
Fast Installation

The M60U_260 supports wall mount installation and ground mount installation, which can shorten installation times and save on the cost for additional racks.

Wall Mount



Ground Mount



Toggle Latch Design

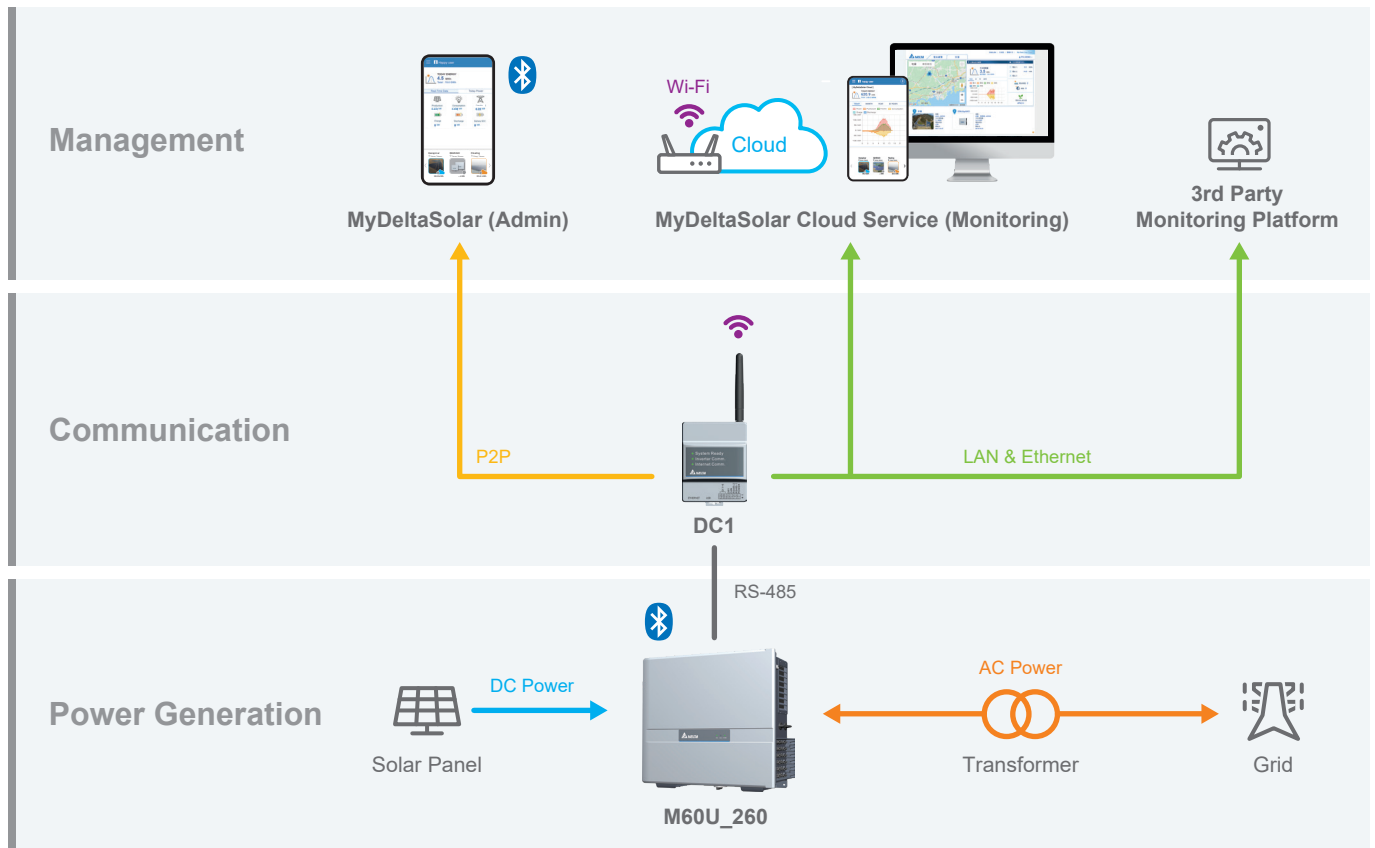
The toggle latch design saves considerable time for maintenance and minimizes the risk of water intrusion.



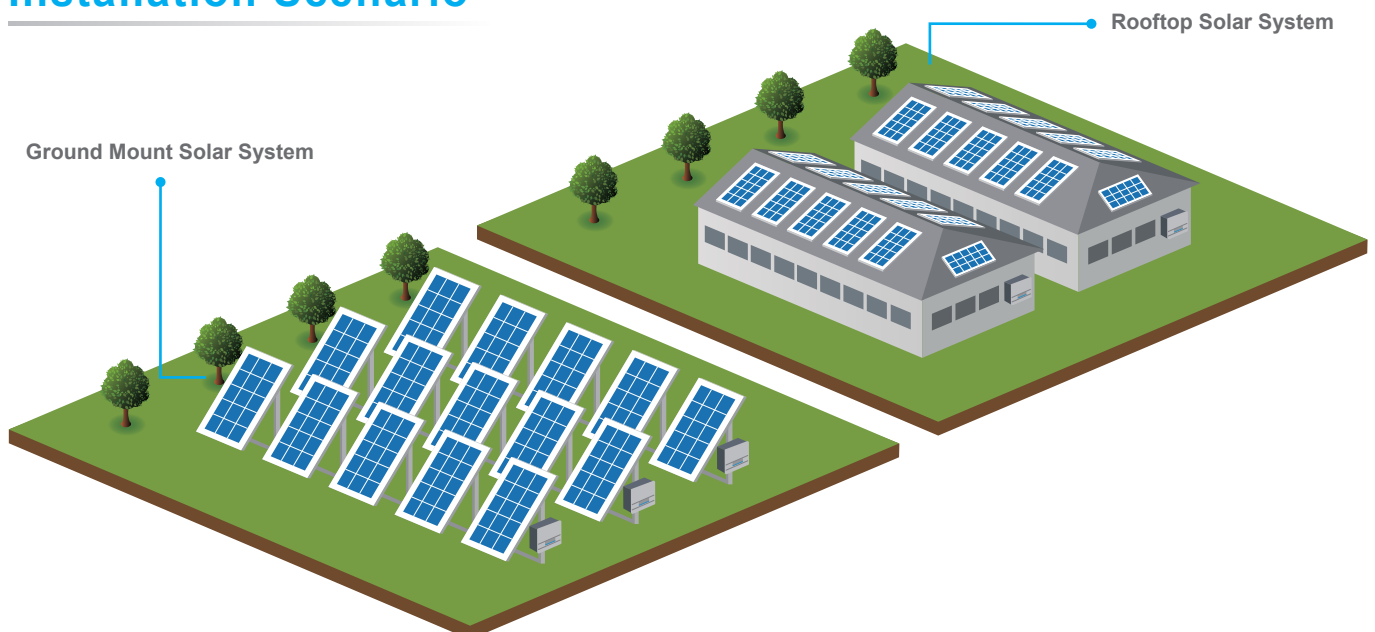
Product Overview

- Delta M60U_260 is able to reach 98.5% peak efficiency, 98% CEC-efficiency over converting PV energy.
- Wide MPP voltage range can maximize customer's revenue.

System Architecture



Installation Scenario



Specifications

Model Number	M60U_260		
DC Input			
Max. Input Voltage	1000 V		
Operating Voltage Range	200 - 1000 V		
MPP Voltage Range for nominal power	390 - 900 V		
Nominal DC Voltage	710 V		
MPP Tracker	6		
Max. Operating Current	30 A per MPPT		
Max. Short Current Capability (Isc)	50 A per MPPT		
DC Connection Type	12 pairs of Amphenol H4 DC Connector (support Y-connection)		
Surge Protection	Type II SPD (built-in) ; Type I+II SPD (optional)		
DC Switch	2 pcs		
AC Output			
Max. Output Power	66 kVA		
Max. Output Current	83.4 A		
Output Power	60 kW @ 122°F		
Nominal AC Voltage	AC 480 V , 3Ø3W or 3Ø4W		
AC Voltage Range	88% to 110% of nominal AC voltage		
Operating Frequency Range	58.5 - 60.5 Hz		
Power Factor	> 0.99 / 0.8 ind - 0.8 cap (adjustable)		
Night Time Reactive Power	36 kVAR		
Surge Protection	Type II SPD (built-in) ; Type I+II SPD (optional)		
T.H.D	< 3% at Rated output current		
AC Connection Type	Screw Clamp Terminal supports, Max. 1 AWG, Cu and Al conductor		
Night Time Consumption	< 3.5 W		
Efficiency			
Peak Efficiency	98.5 %		
Euro Efficiency	98.0 %		
Communication			
Communication Port	RS-485, Bluetooth		
Communication Protocol	Delta, Sunspec		
Indicator	LED (Alarm, Grid, COMM.)		
Certificate			
Grid Support	UL 1741 SA UL 1699B	FCC Part 15 (Class B) CSA C22.2 No.107.1	IEEE 1547
General Information			
Protection	Leakage current protection, Low insulation protection, PID elimination		
Operating Elevation	< 13100 ft (< 4000 m)		
Operating Temperature	-13 to 140°F, > 122°F smart de-rating		
Protection	NEMA 4X		
Cooling	Smart fan air cooling		
Noise	65.2 dBA @ 1m, Amb. 77°F		
Dimension (W x H x D)	27.5 x 24.8 x 10.4 in		
Weight	141 lb		

* Specifications are subject to change without prior notice.

Delta Electronics (Americas), Ltd

46101 Fremont Blvd, Fremont, CA 94538
www.delta-americas.com

Customer Service Technical Support

PVI.Support.US@deltaww.com
+1-877-442-4832



2023 / 05 / 16