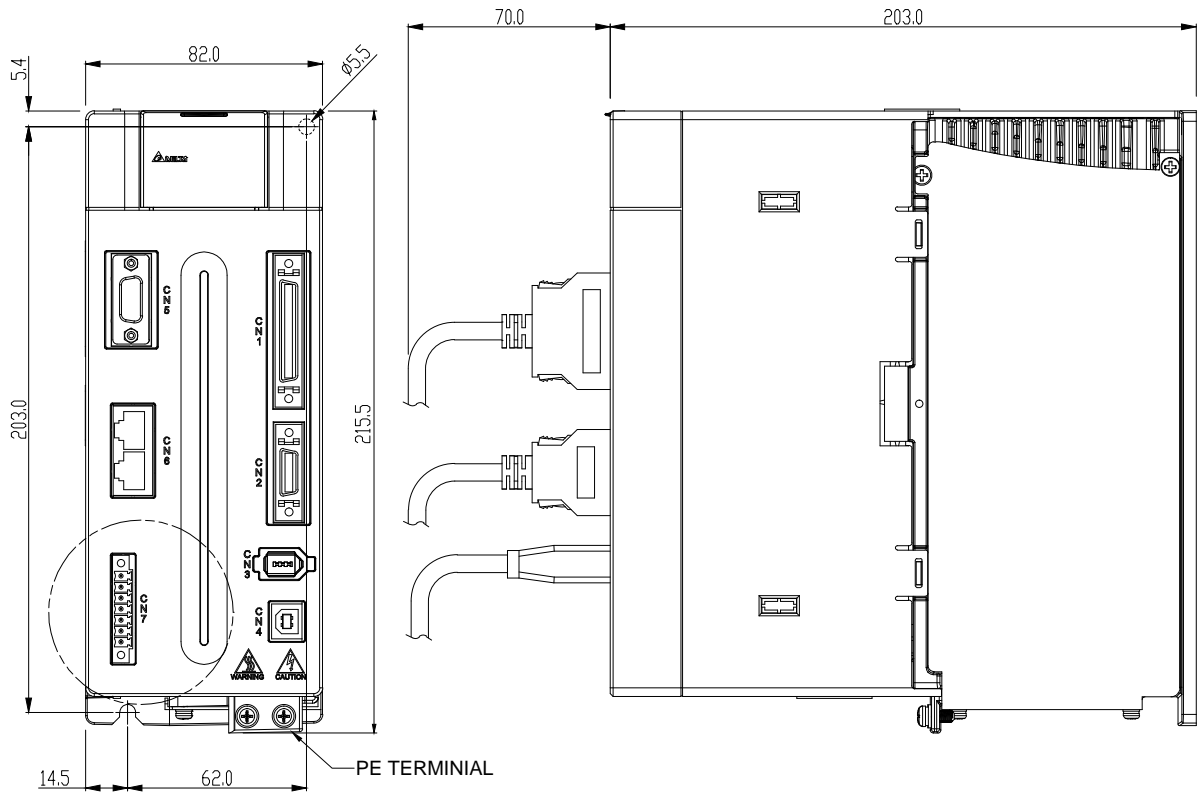


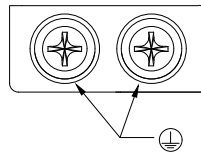
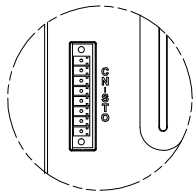
FRAME-C1

PHYSICAL DIMENSIONS

UNITS:mm



FOR ASD-A2-XXXX-LN



SCREW : M4x 0.7
MOUNTING SCREW TORQUE :14 (kgf-cm)



DELTA

台達電子工業股份有限公司

DELTA ELECTRONICS, INC.

THESE DRAWINGS AND SPECIFICATIONS ARE THE PROPERTY OF DELTA ELECTRONICS, INC. AND SHALL NOT BE REPRODUCED OR USED AS THE BASIS FOR THE MANUFACTURE OR SELL OF APPARATUSES OR DEVICES WITHOUT PERMISSION.

DOCUMENT NAME

ASD-A2&A2R&S_FRAME-C1_DWG00

ASD-A2 Series :

ASD-A2-2023-B	ASD-A2-3023-B
ASD-A2-2023-L	ASD-A2-3023-L
ASD-A2-2023-M	ASD-A2-3023-M
ASD-A2-2023-F	ASD-A2-3023-F
ASD-A2-2023-N	ASD-A2-3023-N
ASD-A2-2023-U	ASD-A2-3023-U

ASD-A2-0743-B	ASD-A2-1043-B	ASD-A2-1543-B
ASD-A2-0743-L	ASD-A2-1043-L	ASD-A2-1543-L
ASD-A2-0743-M	ASD-A2-1043-M	ASD-A2-1543-M
ASD-A2-0743-F	ASD-A2-1043-F	ASD-A2-1543-F
ASD-A2-0743-U	ASD-A2-1043-U	ASD-A2-1543-U

ASD-A2R Series :

ASD-A2R-2023-L	ASD-A2R-3023-L
ASD-A2R-2023-M	ASD-A2R-3023-M
ASD-A2R-2023-F	ASD-A2R-3023-F
ASD-A2R-2023-U	ASD-A2R-3023-U
ASD-A2R-2023-T	ASD-A2R-3023-T

ASD-S Series :

ASD-S-3023-F
ASD-S-3023-N

04		
03		
02		
01		
00	ISSUE	2014/12/15
REV.	DESCRIPTION	DATE
DRAWN	Nash.Lin	DESIGN Nash.Lin