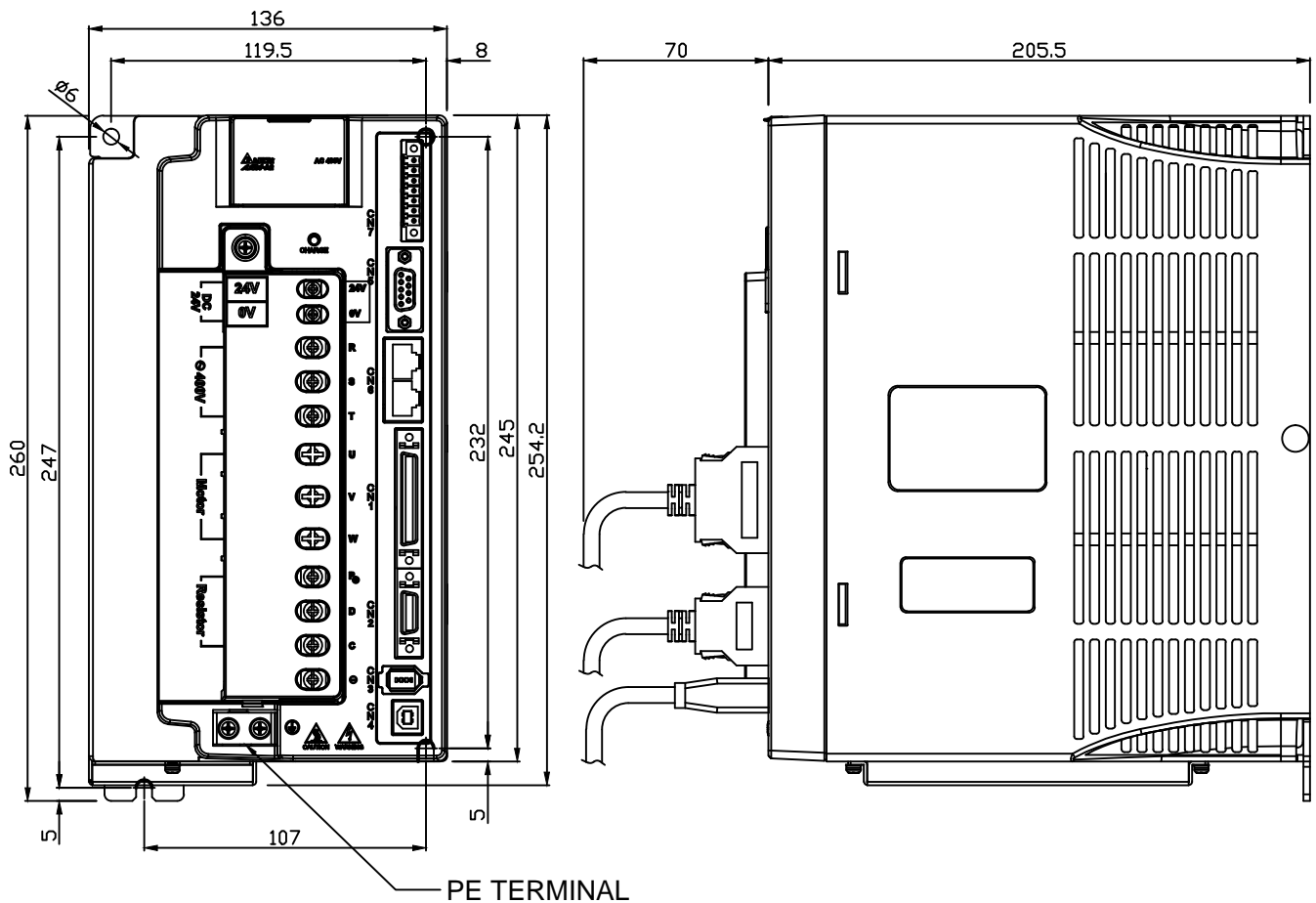


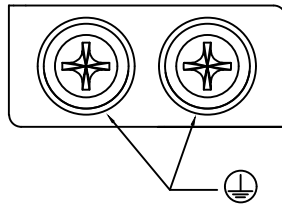
# # FRAME-F2

## PHYSICAL DIMENSIONS

UNITS:mm



PE TERMINAL



SCREW : M4x 0.7  
MOUNTING SCREW TORQUE :14 (kgf-cm)



THESE DRAWINGS AND SPECIFICATIONS ARE THE PROPERTY OF DELTA ELECTRONICS, INC. AND SHALL NOT BE REPRODUCED OR USED AS THE BASIS FOR THE MANUFACTURE OR SELL OF APPARATUSES OR DEVICES WITHOUT PERMISSION.

DOCUMENT NAME

ASD-A2&S\_FRAME-F2\_DWG00

# ASD-A2 Series :

ASD-A2-7543-B  
ASD-A2-7543-L  
ASD-A2-7543-M  
ASD-A2-7543-F  
ASD-A2-7543-N  
ASD-A2-7543-U

# ASD-S Series :

ASD-S-7543-F  
ASD-S-7543-N

04		
03		
02		
01		
00	ISSUE	2014/12/15
REV.	DESCRIPTION	DATE
DRAWN	Nash.Lin	DESIGN Nash.Lin