

AS320T-B AS320P-B

EN Instruction Sheet
TR Bilgi Dökümanı
TW 安裝說明
CN 安装说明



5014085602
2024-03-01



www.deltaww.com



EN This is an OPEN TYPE module and therefore should be installed in an enclosure free of airborne dust, humidity, electric shock and vibration. The enclosure should prevent non-maintenance staff from operating the device (e.g. key or specific tools are required for operating the enclosure) in case danger and damage on the device may occur. If the equipment is used in a manner not specified by the manufacturer, the protection provided by the equipment may be impaired. For any repair or maintenance needs, please contact us.

FR Ceci est un module ouvert et il doit donc être installé dans un coffret à l'abri des poussières, des vibrations et ne pas être exposé aux chocs électriques. Le boîtier ou l'armoire doit éviter toute action d'un personnel autre que celui affecté à la maintenance de l'appareil (par exemple, clefs, outils spécifiques pour l'ouverture du coffret), ceci afin d'éviter tout accident corporel ou endommagement du produit.

TR Bu ürün AÇIK TİP bir modül olup toz, rutubet, elektrik şoku ve titreşimden uzak kapalı yerlerde muhafaza edilmelidir. Yanlış kullanım sonucu ürünün zarar görmesini önlemek için yetkili olmayan kişiler tarafından ürüne müdahale edilmesini önleyecek koruyucu önlemler alınmalıdır. (Ürünün bulunduğu panoya kilit konulması gibi). Ürün, üretici tarafından belirtilmeyen bir şekilde kullanılırsa, ekipmanın sağladığı koruma bozulabilir. Herhangi bir onarım veya bakım ihtiyaçlarınız için lütfen bizimle iletişime geçin.

TW 本機為開放型 (OPEN TYPE) 機種，因此使用者使用本機時，必須將之安裝於具防塵、防潮及免於電擊/衝擊意外之外殼配線箱內。另必須具備保護措施 (如：特殊之工具或鑰匙才可打開) 防止非維護人員操作或意外衝擊本體，造成危險及損壞。如果以製造商未指定的方式使用設備，則可能會削弱設備提供的保護能力，若有維修或保養需求請與我們聯繫。

CN 本机为开放型 (OPEN TYPE) 机种，因此使用者使用本机时，必须将其安装于具防尘、防潮及免于电击/冲击意外的外壳配线箱内。另必须具备保护措施 (如：特殊的工具或钥匙才可打开) 防止非维护人员操作或意外冲击本体，造成危险及损坏。如果以制造商未指定的方式使用设备，则可能会削弱设备提供的保护能力，若有维修或保养需求请与我们联系。



EN Please refer to the AS Series Hardware and Operation Manual for more information.

TR Daha fazla bilgi için lütfen AS Serisi Donanım ve Kullanım Klavuzuna bakınız.

TW 詳細資料請參考 AS 系列硬體及操作手冊

CN 详细资料请参考 AS 系列硬件及操作手册

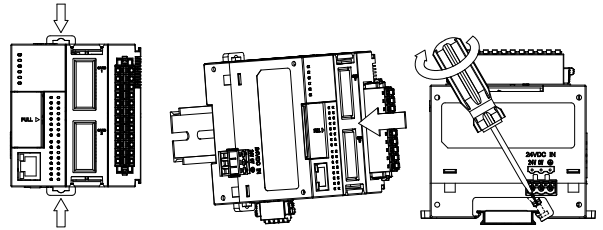
EN Assembly TR Montaj TW 安裝 CN 组装

EN Clip up the two DIN rail clip on the module. Parallel the module groove on the back to the DIN rail, then push and slide along until hearing a click.

TR Modül üzerindeki iki DIN ray klipsini dışa doğru çekin. Altındaki modül oyuğunu DIN ray ile paralel konuma getiriniz ve sonra klik sesini duyana kadar klipsleri içe doğru bastırın.

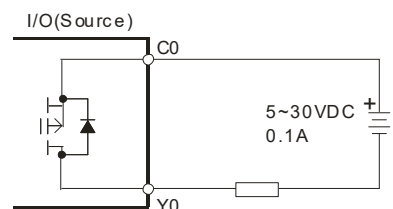
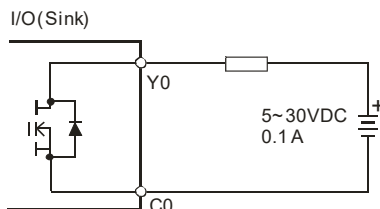
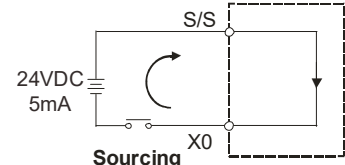
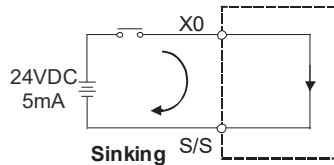
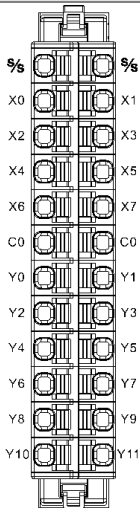
TW 將模組上下方的兩個 DIN 軌固定扣往中間壓後，將模組後方勾槽平行對準 DIN 軌並往 DIN 軌壓直到喀一聲，即完成。

CN 将模块上下方的两个 DIN 轨固定扣往中间压后，将模块后方勾槽平行对准 DIN 轨并往 DIN 轨压直到喀一声，即完成。

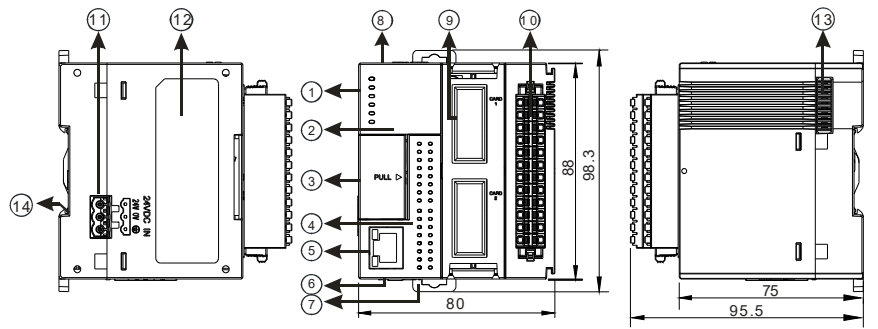


EN I/O TR I/O TW 輸入輸出 CN 输入输出

Input type: SINK, SOURCE

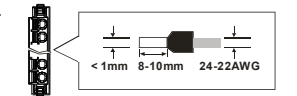
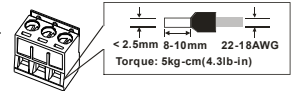


EN Dimensions(mm) & Product Profile
 TR Ölçüler(mm) & Ürün Görünüşü
 TW 尺寸 (mm) 及產品外觀
 CN 尺寸 (mm) 及產品外觀



EN	TR	TW	CN
1 Status indicator	Durum göstergesi	狀態指示燈	状态指示灯
2 Model name	Model adı	機種名稱	机种名称
3 RUN/STOP switch, USB communication port, SD card slot, VR0/VR1	RUN/STOP anahtarları, USB haberleşme port, SD kard slot, VR0/VR1	RUN/STOP 開關、USB 通訊埠、SD 卡插槽、VR0/VR1	RUN/STOP 开关、USB 通訊口、SD 卡插槽、VR0/VR1
4 I/O indicator	I/O indikatör	I/O 指示燈	I/O 指示灯
5 Ethernet communication port	Ethernet haberleşme port	Ethernet 通訊埠	Ethernet 通訊口
6 COM1/COM2 port	COM1/COM2 port	COM1/COM2 埠	COM1/COM2 端口
7 DIN rail clip	DIN ray klipsi	DIN 軌固定扣	DIN 軌固定扣
8 Battery holder (battery NOT included)	Pil yuvası (pil dahil değildir)	電池座 (本產品不隨機附贈電池)	电池座 (本产品不随机附赠电池)
9 Extension card slot	Genişleme kart slotu	擴充卡插槽	扩充卡插槽
10 Removable terminal block	Sökülebilir terminal bloğu	脫落式端子	脱落式端子
11 DC power input	DC power girişi	電源輸入口	电源输入口
12 Label	Etiket	標籤	标签
13 Extension communication port	Genişleme modülü iletişim portu	擴充模組通訊埠	扩充模块通讯端口
14 Grounding shrapnel	Topraklama parçası	接地彈片	接地弹片

EN Wiring TR Bağlantı TW 配線 CN 配线
 EN Please use single-core or multi-core cables. The specifications for the terminals and the wiring are shown in the figure. The temperature of the copper conductor should be 60/75°C.
 TR Lütfen tek damarlı veya çok damarlı kablolar kullanınız. Klemensler ve bağlantılar ile ilgili özellikler şekilde gösterilmektedir. Bakır iletken sıcaklığı 60/75°C olmalıdır.
 TW 輸出 / 入配線端請使用單蕊裸線或多蕊線。端子與線材規格示意圖如右所示。只能使用 60/75°C 的銅導線。
 CN 輸出 / 入配線端請使用單蕊裸線或多蕊線。端子與線材規格示意圖如右所示。只能使用 60/75°C 的銅導線。



Part Name	Hazardous Substances						台達電子工業股份有限公司		Industrial Automation Headquarters			
	Pb	Hg	Cd	Cr VI	PBB	PBDE	Delta Electronics (China) Co., Ltd.		Delta Electronics, Inc.			
Metal Part	X	O	O	O	O	O	地址: 330477 桃園市桃園區興隆路 18 號 電話: 886-3-3626301 傳真: 886-3-3716301		No.18, Xinglong Rd., Taoyuan District, Taoyuan City, 330477, Taiwan TEL: 886-3-362-6301 / FAX: 886-3-371-6301			
Plastic Part	O	O	O	O	O	O	中達電通股份有限公司 地址: 上海市浦東新區民夏路 238 號 郵編: 201209 電話: (021) 5863-5678 傳真: (021) 5863-0003		238 Min-Xia Road, Pudong District, Shanghai, P.R.C. 201209 TEL: 86-21-5863-5678 / FAX: 86-21-5863-0003			
Electronic	X	O	O	O	O	O	上海總部 電話:(021)6861-9090	上海浦西 電話:(021)6301-2827	北京 電話:(010)8225-3225	南京 電話:(025)8334-6585	杭州 電話:(0571)8882-0610	長春 電話:(0431)8892-5060
Contacts	O	O	X	O	O	O	南昌 電話:(0791)8625-5010	合肥 電話:(0551)6281-6777	武漢 電話:(027)6784-5292	長沙 電話:(0731)8549-9156	福州 電話:(0591)8755-1305	哈爾濱 電話:(0451)5366-5568
Cable & Cabling accessories	X	O	O	O	O	O	廈門 電話:(0592)5313-601	廣州 電話:(020)3879-2175	寧波 電話:(0771)2621-501	貴陽 電話:(0851)8690-1374	昆明 電話:(0871)6313-7362	蘭州 電話:(0931)6406-725
Battery	O	O	O	O	O	O	成都 電話:(028)8434-2075	重慶 電話:(023)8806-0306	西安 電話:(029)8836-0780	呼和浩特 電話:(0471)6297-808	太原 電話:(0351)4039-485	青島 電話:(0532)5557-9067
							石家莊 電話:(0311)8666-7337	鄭州 電話:(0371)6384-2772	濟南 電話:(0531)8690-6277	天津 電話:(022)2301-5082	瀋陽 電話:(024)2334-1160	無錫 電話:(0510)8552-9595
本表格係根據 SJ/T 11364 的規定編制。 O: 表示該有害物質在該部件所有均質材料中的含量均在 GB/T 26572 規定的限量要求以下。 X: 表示該有害物質在該部件的某一均質材料中的含量超出 GB/T 26572 規定的限量要求。 This table is made according to SJ/T 11364. O: Indicates that the concentration of hazardous substance in all of the homogeneous materials for this part is below the limit as stipulated in GB/T 26572. X: Indicates that concentration of hazardous substance in at least one of the homogeneous materials used for this part is above the limit as stipulated in GB/T 26572.							* 本手冊內容若有變更, 恕不另行通知。		* 本手冊內容若有改動, 恕不另行通知。			
Asia China: Delta Electronics (Shanghai) Co., Ltd. No.182 Minyu Rd., Pudong Shanghai, P.R.C. Post code: 201209 TEL: +86-21-6872-3988 / FAX: +86-21-6872-3996 Customer Service: 400-820-9595 Japan: Delta Electronics (Japan), Inc. Industrial Automation Sales Department 2-1-14 Shibadaimon, Minato-ku Tokyo, Japan 105-0012 TEL: +81-3-5733-1155 / FAX: +81-3-5733-1255 Korea: Delta Electronics (Korea), Inc. 1511, 219, Gasan Digital 1-Ro., Geumcheon-gu, Seoul, 08501 South Korea TEL: +82-2-515-5305 / FAX: +82-2-515-5302 Singapore: Delta Energy Systems (Singapore) Pte Ltd. 4 Kaki Bukit Avenue 1, #05-04, Singapore 417939 TEL: +65-6747-5155 / FAX: +65-6744-9228 India: Delta Electronics (India) Pvt. Ltd. Plot No.43, Sector 35, HSIEDC Gurgaon, PIN 122001, Haryana, India TEL: +91-124-4874900 / FAX: +91-124-4874945		Thailand: Delta Electronics (Thailand) PCL 909 Soi 9, Moo 4, Bangpoo Industrial Estate (E.P.P.), Pattana 1 Rd., T.Phraaksa, A.Muang, Samutprakarn 10280, Thailand TEL: +66-2709-2800 / FAX: +66-2709-2827 Australia: Delta Electronics (Australia) Pty Ltd. Unit 2, Building A, 18-24 Ricketts Road, Mount Waverley, Victoria 3149 Australia Mail: IA.au@deltaww.com TEL: +61-1300-335-823 / +61-3-9543-3720 Americas USA: Delta Electronics (Americas) Ltd. 5101 Davis Drive, Research Triangle Park, NC 27709, U.S.A. TEL: +1-919-767-3813 Brazil: Delta Electronics Brazil Ltd. Estrada Velha Rio-São Paulo, 5300 Eugênio de Melo - São José dos Campos CEP:12247-004-SP- Brazil TEL: +55-12-3932-2300 / FAX: +55-12-3932-237 Mexico: Delta Electronics International Mexico S.A. de C.V. Gustavo Baz No. 309 Edificio E PB 103 Colonia La Loma, CP 54060 Tlalnepantla, Estado de México TEL: +52-55-3603-9200		EMEA EMEA Headquarters: Delta Electronics (Netherlands) B.V. Sales: Sales.IA.EMEA@deltaww.com Marketing: Marketing.IA.EMEA@deltaww.com Technical Support: iatechnicalsupport@deltaww.com Customer Support: Customer-Support@deltaww.com Service: Service.IA.emea@deltaww.com TEL: +31(0)40 800 3900 DACH: Delta Electronics (Netherlands) B.V. Coesterweg 45, D-59494 Soest, Germany Mail: Sales.IA.DACH@deltaww.com TEL: +49 2921 987 238 France: Delta Electronics (France) S.A. ZI du bois Chailand 2, 15 rue des Pyrénées, Lisses, 91090 Evry Cedex, France Mail: Sales.IA.FR@deltaww.com TEL: +33(0)1 69 77 82 60 UK: Delta Electronics Europe Ltd. 1 Redwood Court, East Kilbride, Glasgow, G74 5PF, United Kingdom TEL:+44-1355-588-888		Iberia: Delta Electronics Solutions (Spain) S.L.U Ctra. De Villaverde a Vallecas, 265 1º Dcha Ed. Hormigueras - P.I. de Vallecas 28031 Madrid TEL: +34(0)91 223 74 20 Carrer Llacuna 166, 08018 Barcelona, Spain Mail: Sales.IA.Iberia@deltaww.com Italy: Delta Electronics (Italy) S.r.l. Via Meda 2-22060 Novedrate(CO) Piazza Grazioli 18 00186 Roma Italy Mail: Sales.IA.Italy@deltaww.com TEL: +39 039 8900365 Turkey: Delta Greentech Elektronik San. Ltd. Sti. (Turkey) Şerifli Mah. Hendem Cad. Kule Sok. No:16-A 34775 Ümraniye - İstanbul Mail: Sales.IA.Turkey@deltaww.com TEL: +90 216 499 9310 MEA: Eltek Dubai (Eltek MEA DMCC) OFFICE 2504, 25th Floor, Saba Tower 1, Jumeirah Lakes Towers, Dubai, UAE Mail: Sales.IA.MEA@deltaww.com TEL: +971(0)4 2690148						
*We reserve the right to change the information in this instruction sheet without prior notice.												