

Parker Compax3 Servo

HMI Factory Setting:

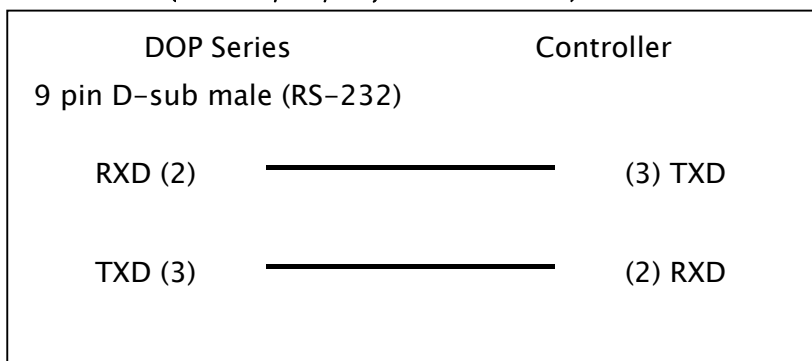
Baud rate: 115200, 8, None, 1

Controller Station Number: 0 ([Note1](#))

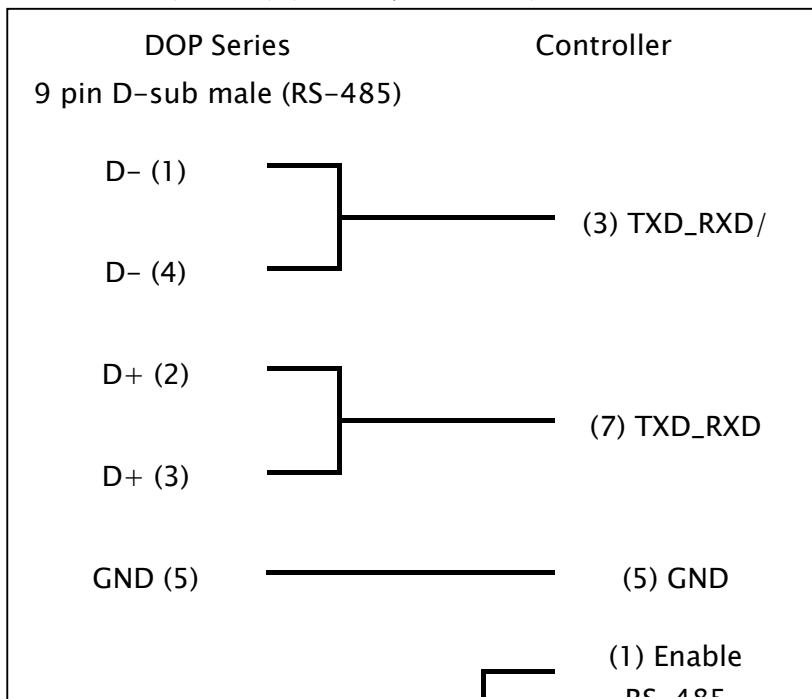
Control Area / Status Area: None/None

Connection

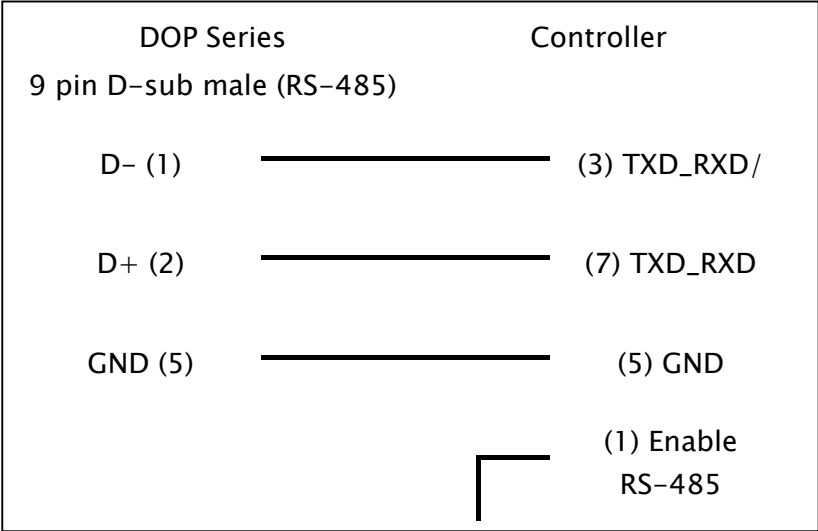
a. RS-232 (DOP-A/AE/AS, DOP-B Series)



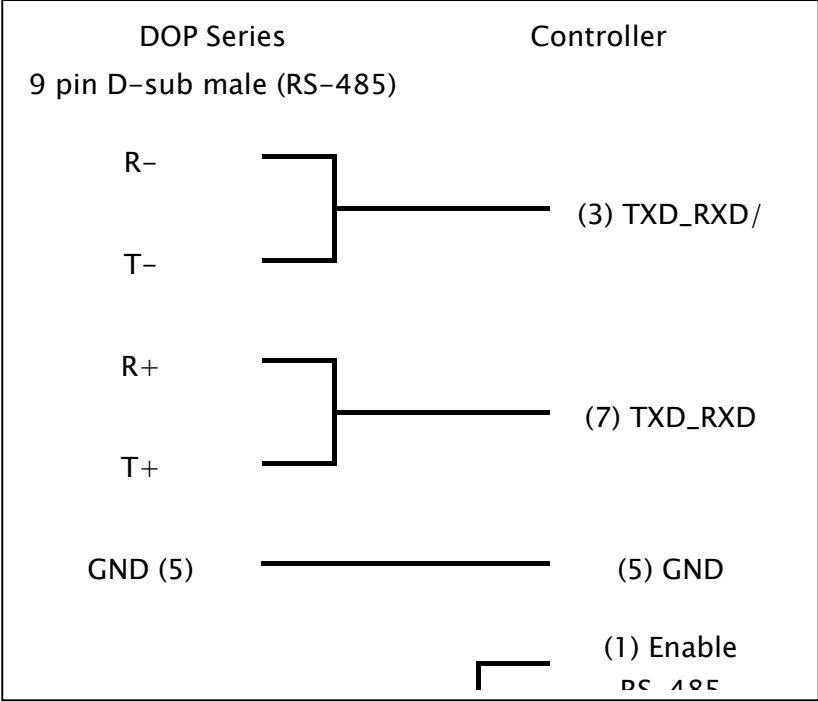
b. RS-485 (2-wire) (DOP-A/AE Series)



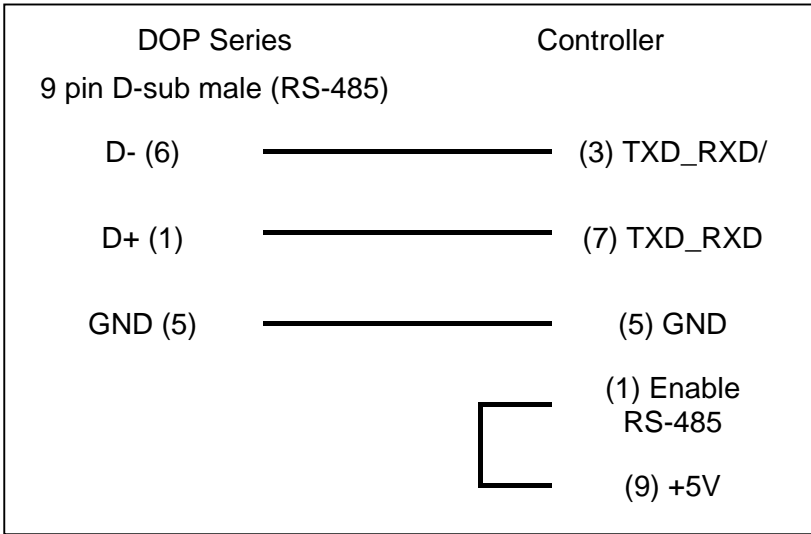
c. RS-485 (2-wire) (DOP-AS57 Series)



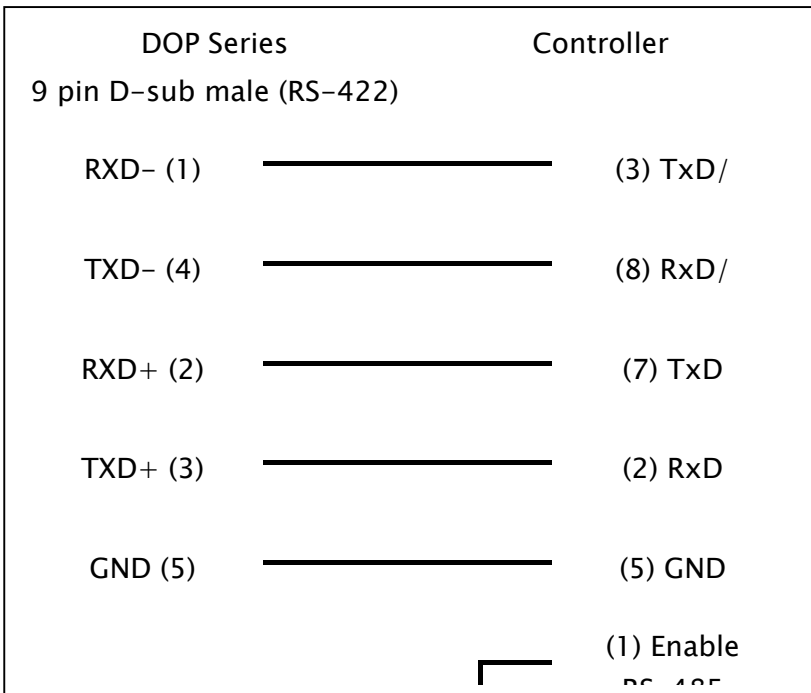
d. RS-485 (2-wire) (DOP-AS35/AS38 Series)




e. RS-485 (2-wire) (DOP-B Series)



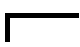
f. RS-422 (4-wire) (DOP-A/AE Series)



g. RS-422 (4-wire) (DOP-AS35/AS38/AS57 Series)

DOP Series		Controller
9 pin D-sub male (RS-422)		
R-	—————	(3) TxD/
T-	—————	(8) RxD/
R+	—————	(7) TxD
T+	—————	(2) RxD
GND (5)	—————	(5) GND
		(1) Enable DC-125

h. RS-422 (4-wire) (DOP-B Series)

DOP Series		Controller
9 pin D-sub male (RS-422)		
RXD- (9)	—————	(3) TxD/
TXD- (6)	—————	(8) RxD/
RXD+ (4)	—————	(7) TxD
TXD+ (1)	—————	(2) RxD
GND (5)	—————	(5) GND
		(1) Enable DC 125

Definition of PLC Read/Write Address

a. Registers

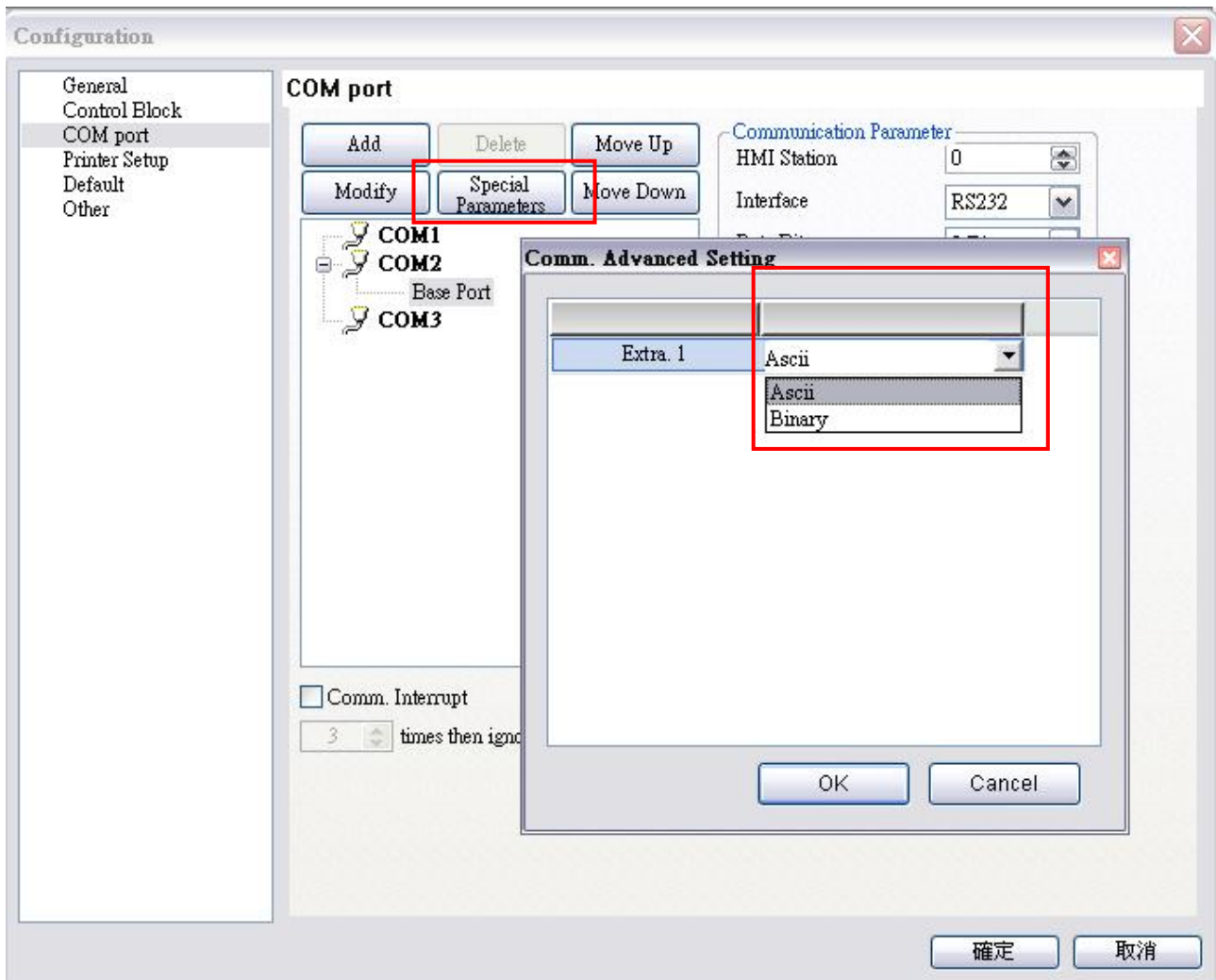
Type	Format	Read/Write Range	Data Length	Note
	Index No.(n) Sub-Index No.(m)			
Object	OBJWn.m	OBJW0.1 – OBJW65535.32	Word	
Object	OBJDn.m	OBJD0.1 – OBJD65535.32	Double word	3
Object	OBJRn.m	OBJR0.1 – OBJR65535.32	Floating point	3

b. Contacts

Type	Format	Read/Write Range	Note
	Index No.(n) Sub-Index No.(m) Bit No.(b)		
Object	OBJWBn.m/b	OBJWB0.1/0 – OBJWB65535.32/15	
Object	OBJDBn.m/b	OBJDB0.1/0 – OBJDB65535.32/31	

NOTE

- 1) The connection established by RS-232 does not require station number setting. But, if the connection is established by RS-485, station number must be set in a range of 0 ~99.
- 2) This program supports both ASCII/BINARY RECORD mode, but the default setting is ASCII mode. Change can be made in “Screen Editor” → “Special Parameters” → “Extra”.



- 3) This protocol support access to the parameter of Compax3 and above only and is defined as OBJ. The data in different address are not the same type, therefore the character follows “OBJ” is to represent each type of data. OBJW is for 16bits date; OBJD is for 32 bits data, the data length must be Double Word format and numeric unit can not be Floating point; OBJR is for 32 bits data, data length must be Double Word type and numeric unit must be Floating point.
- 4) Pay special attention to the parameter characteristics, “read only” or “read/write”. Please refer to Parker Compax 3 user manual for more detail.

