



EV Charging Solution

AC Charger / AC MAX - Smart

- Flexible 22 kW AC platform to cater for diverse charging application requirements
- Low standby power consumption for energy-saving
- Compact design with robust enclosure for indoor and outdoor environment



Commercial
Building



Parking



Residential
Area



Compact and Powerful - Liven up Home Charging

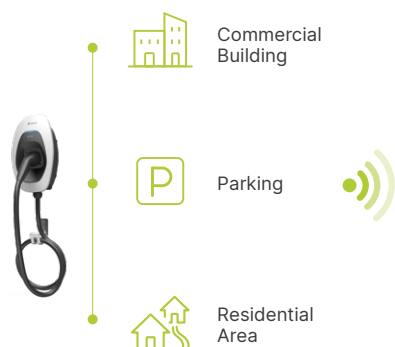
The Delta AC MAX Smart combines efficient 3-phase charging of up to 22 kW with Ethernet and WLAN interfaces to cater for a wide range of applications. The Delta AC MAX Smart can easily be connected to your existing network for energy management and business integration purposes. No LAN available? No problem! Every AC MAX Smart is equipped with an internal

cellular modem. The plug-and-play design reduces installation and commissioning time. By supporting Over-the-Air (OTA) firmware update via WLAN the Delta AC MAX Smart is the future-proof AC charging solution for advanced residential and commercial charging applications.



Application Scenario

Charging Network



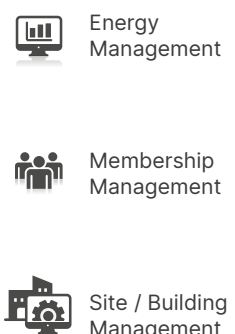
Backend Office

EV Charging Network
Management System



Mobile App* access
for remote control

Applications



... and more

* Mobile App planned

Feature Highlights



22 kW

AC charger to optimize charging activity

- Three phase charging with 22 kW output power
- Extremely low standby power for energy-saving and cost optimization



Compact design with robust enclosure

- Compact design : 218 × 371 × 167 mm
- All-weather protection : IP55 / IK09
- Optional wall mount or pedestal mount



Complete system integration for better charging services

- OCPP protocol and network connectivity
- Interoperate with related business, service, and 3rd party applications

Product at a Glance

Network Connectivity

Bluetooth, Ethernet, Cellular, WLAN

User Authentication

RFID reader

Charging Interface



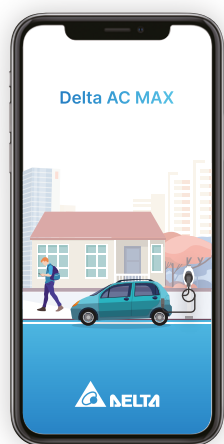
IEC 62196-2 Type 2

Wiring

Bottom feed



Delta AC MAX App



Hassle-free Connection

Set up in a few steps to get AC MAX ready.

One Tap Charging

Start and stop charging with your smartphone. Monitor the status anytime.

Customize your Preference

Create your charging session schedule and user list to fit home charging needs.

Embedded Features



Start / Stop Charging



Scheduled charging



Maximum Charging Current



Firmware Update



LED Indicator Brightness



Charging History



Delta AC MAX



Specifications

Part Number	AC MAX Smart	
Power Input		
Nominal Current	16 A	32 A
Grid Connection	Three-phase electric power (L1, L2, L3, N, PE) All AC MAX BASIC models support both single phase and three phase installations	
AC Voltage	230 V / 400 V	
Frequency	50 Hz / 60 Hz	
Grounding Systems	TN, TT, IT	
Terminal	Terminal block	
Protection	Over current, Under voltage, Over voltage, Over temperature, Surge protection, Short circuit, Ground fault	
Standby Power	< 10 W	
Charging Output		
Nominal Power	Three-phase: 11 kW	Three-phase: 22 kW
Nominal Current	16 A per phase	32 A per phase
Connector Type	AC Type 2 Plug	AC Type 2 Plug
Charging Voltage	230 V / 400 V	
Cable Length	5 m (models with AC Type 2 Plug charging interface)	
Protection	RCD Type A (AC 30 mA), RDC-DD (DC 6 mA)	
Compliance	IEC 61851-1, IEC 62196-2, IEC61008-1, IEC 62955	
User Interface		
Display	Status LED, 4 colors	
Authentication	RFID (ISO/IEC 1443 A/B)	
Charger Configuration	Maximum charging current selectable by 8-step hardware DIP switch	
Network Interface		
Bluetooth		
Protocols and Applications	Configuration, control, monitoring and firmware update	
Cellular		
Cellular Technology	2G / 3G / 4G	
SIM Card Format	Micro-SIM (15 mm x 12 mm)	
Protocols and Applications	Backend Connection via OCPP 1.6 (tested with OCTT)	
Local Area Network		
LAN Technology	Ethernet (RJ45) and WLAN	
Protocols and Applications	Backend Connection via OCPP 1.6 (tested with OCTT), ModBus TCP for energy management	
Mechanical Properties		
Ingress Protection (IEC 60529)	IP55	
Impact Protection (IEC 62262)	IK09	
Cooling	Natural convection	
Dimensions* (W x H x D)	218 × 371 × 167 mm (8.6 × 14.6 × 6.6 inch)	
Weight*	6.0 kg (13.3 lbs), including charging cable	
Environmental Conditions		
Operating Temperature Range	- 30 °C to + 50 °C (- 22 °F to + 122 °F)	
Storage Temperature Range	- 40 °C to + 80 °C (- 40 °F to + 176 °F)	
Humidity	< 95 % relative humidity, non-condensing	
Altitude	Up to 2,000 m (6,500 ft.)	
Compliance		
EU Low Voltage Directive	IEC 61851-1, IEC 62479	
EU EMI Directive	EN 61000-3-11 / -12, IEC 61851-21-2	

* Product outlook depends on model configuration. Specifications are subject to change without notice.



More information

Delta Electronics (Netherlands) BV

Zandsteen 15, 2132 MZ Hoofddorp, The Netherlands
TEL : +31 20 655-0900

www.delta-emea.com



2025/03