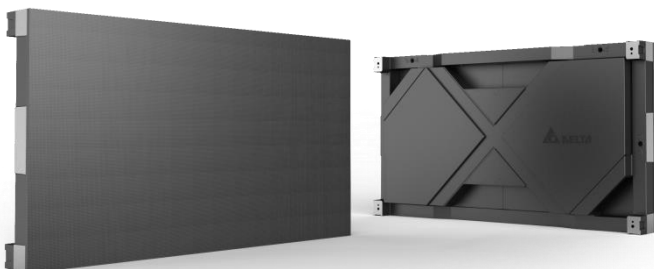




# Fine Pitch LED Display System

## FE-Series

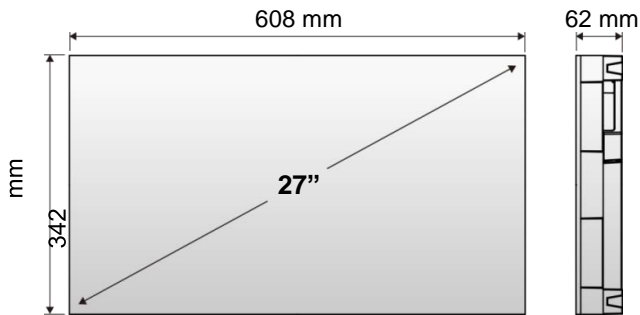
- Fine Image – Leading technology of high gray level for detailed image gradation
- Superior visuals – Wide color gamut coverage for vivid image presentation
- Brilliant design – Die-casting aluminum design with 16:9 aspect ratio to present high definition image
- Great Versatility – Front or rear serviceable module option to fit in with the available space
- Long lifespan – 100,000hrs service life with 24/7 operation



# FE-Series

Delta FE series using good circuit design techniques to achieve a wide range of colors, excellent color uniformity and high gray level for detailed image gradation. The superior gray level performance can present all detail even in viewing lower light level content. The unique design of de-ghost circuit can also prevent LED damaged by reverse bias.

Die-cast aluminum design and the use of CNC precision machining make the flatness of the screen to be perfect and optimize for 16:9 aspect ratio. FE Series LED video wall displays easily scale for existing Full HD content and sources.



## Specifications

Product Name		FE-12	FE-15	FE-19	FE-25
Pixel Pitch (mm)		1.26	1.58	1.9	2.53
LED Type (black or white SMD/TH)		Black SMD			
Pixel Configuration		SMD 3-IN-1			
Pixel Density (pixels/m <sup>2</sup> )		623,269	398,892	277,008	156,971
Brightness (cd/m <sup>2</sup> )	Native (max)	800~900	900~1,000		
	Calibrated	500~600	700~800		
Dimming Capability		0~255 level			
Contrast Ratio		≥3,000 : 1			
Refresh Rate		2,160Hz	3,120 Hz		
Gray Scale		13 bit	15 bit	13 bit	15 bit
Colors		549 billion	35 trillion	549 billion	35 trillion
Viewing Angle	Horizontal	160° (+/-80°)			
	Vertical	160° (+/-80°)			
Lifetime		100,000 hrs			
Power Input		AC 100~240V, 47~63 Hz			
Power Consumption (Calibrated)	Max. (W/cabinet)	140	180		170
	Avg. (W/cabinet)	47	60		57
Cabinet Size (W x H x D)		608 x 342 x 62 mm (23.94 x 13.46 x 2.44 inch)			
Weight (Kg/cabinet)		7.9 +/-1			
Temperature	Operating	-10°~40°C (14°~104°F)			
	Storage	-20°~60°C (-4°~140°F)			

Relative Humidity	Operating	10%~90%
	Storage	10%~90%
Service Access		Front *
IP Grade		Front IP40 / Rear IP20
Certification		UL,CB,CE,FCC,CCC

Ver: 133C833

\* Rear access is available.

※ All specifications are subject to change without prior notice.

Website: [www.deltadisplays.eu](http://www.deltadisplays.eu) | Contact Us: [info@deltadisplays.eu](mailto:info@deltadisplays.eu)

