

20 W / 60 W USB-A+C PD Wall Socket



High Power, High Performance

- USB-A+C dual ports, with a 60 W maximum power.
- 0%-50% fast charging for iPhone 15 large capacity models in 30 minutes.
- Applicable to mobile phones, laptops, and other electrical devices.



High Scalability

- Scalable with spare space for one AC socket or light switch.
- Compatible with different socket clips for easy installation.
- Modular design for sockets of various Asian brands.



Safety Assurance

- 10,000 mating cycles, higher than the average.
 - Compliant with Taiwan's CB, BSMI, PSE, LPS, UL94 V-0 and other safety and fire prevention standards.
 - Complete compatibility testing to charge electric devices of multiple major brands.
 - 5 major circuit protections*
- * Overcurrent protection (OCP), Overvoltage protection (OVP), Overtemperature protection (OTP), Overload protection (OPP), Output short circuit protection (SCP)



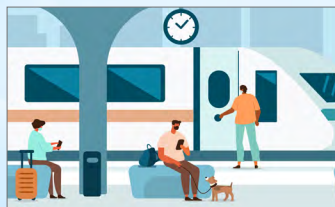
Environmental-friendly

- Connector-free to achieve eco-friendly goal.
- Industry-leading 92% energy conversion efficiency to reduce energy waste.
- Manufacturing automation and recyclable materials for a sustainable future.

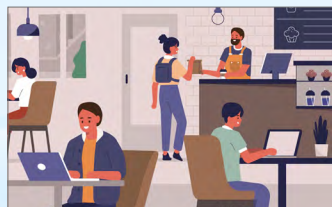
Application



Airport



Train station



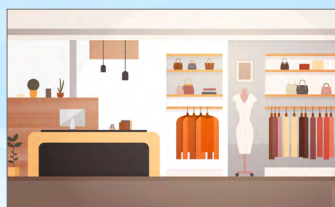
Restaurant



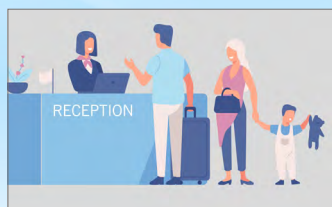
Office



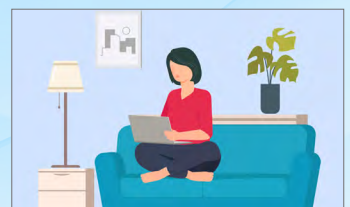
Internet cafe



Department store









Hotel



Home

Specification

		20 W USB-A+C PD Wall Socket	60 W USB-A+C PD Wall Socket	60 W USB-C+C PD Wall Socket
				
				
Port		USB-A + C	USB-A + C	USB-C + C
Depth		43.7 mm	43.2 mm	44.1 mm
AC Input		100 - 132 V _{AC} / 0.8 A 50 - 60 Hz	100 - 132 V _{AC} / 1.6 A 50 - 60 Hz	
DC Output	Single Port	Max. 20 W (Type C)	Max. 60 W (Type C)	Max. 60 W (Type C) environment temp. 35°C
	Dual Port	7.5 W (Type C) 7.5 W (Type A)	36 W (Type C) 12 W (Type A)	30 W (Type C)+30 W (Type C) or 45 W (Type C)+10 W (Type C)
Power Rating		Type C: 5 V 3 A/9 V 2.22 A/12 V 1.67 A Type A: 5 V/2.4 A	Type C: 5 V 3 A/9 V 3 A/15 V 3 A/20 V 3 A, Type A: 5 V 2.4 A	Type C/C: 5 V 3 A/9 V 3 A/ 15 V 3 A/20 V 3 A
U.S. Department of Energy (DOE)		VI		
Safety		CB, BSMI, PSE, IEC 62368		
Build in Protection		Overcurrent protection (OCP), Overvoltage protection (OVP), Overtemperature protection (OTP), Overload protection (OPP), Output short circuit protection (SCP)		
Protocol		PD3.0, BC1.2, Apple Mode (2.4 A)		
Color		White, Grey		White, Black

Optional Socket Frames

Delta USB-A+C PD Wall Sockets could accommodate customized frames.

Color-Diversifying Frames



20W USB-A+C



60W USB-A+C



60W USB-A+C



60W USB-C+C

Space-Saving Frames



20W USB-A+C



https://www.deltaww.com/pd_charging/

Nov. 2023 - All information and specifications are subjected to change without prior notice.