

Astro

For an exceptional visual experience



Astra

Asymmetric lens design for excellent uniformity



Patented optical technology

A leading-edge optical design holds the secret to the unique Astra LED projection light.



Superb uniformity

Its sophisticated asymmetric lens design optimizes luminous efficiency and delivers an ultra-uniform light distribution.

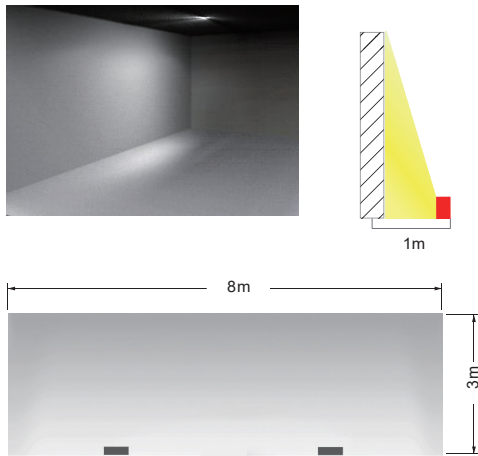


Easy installation

Requiring no additional tilting or further adjustment, the Astra Series is hassle free and perfect as is.

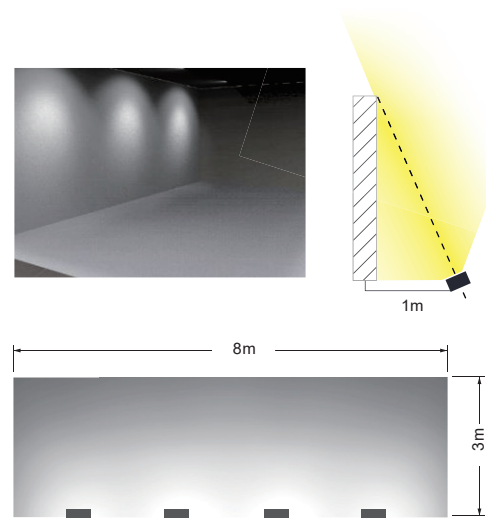
Astra

Shorter installation distance and more uniformity.



Regular spot light

For optimized uniformity effect, tilting the lamp reduces the light utilization rate.



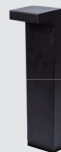
01



Astra Outdoor Flood Light

Bridge pier
River dock
Wall
Image wall

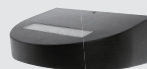
05



Astra Bollard

Garden
Front porch
Park pathway
Lake side

07



Astra Wall Light

Patio ceiling
Balcony ceiling

09



Astra Indoor Flood Light

Menu board
Artwork walls



Astra Outdoor Flood Light

Astra Outdoor Flood Light is designed to meet the needs of the billboard/signboard and architectural lighting market. Its sophisticated asymmetric optics provide superb uniform illumination.

Astra Outdoor Flood Light illuminates areas up to 3 times as wide as regular flood lights and provides exceptionally uniform illumination while saving energy and reducing installation cost.



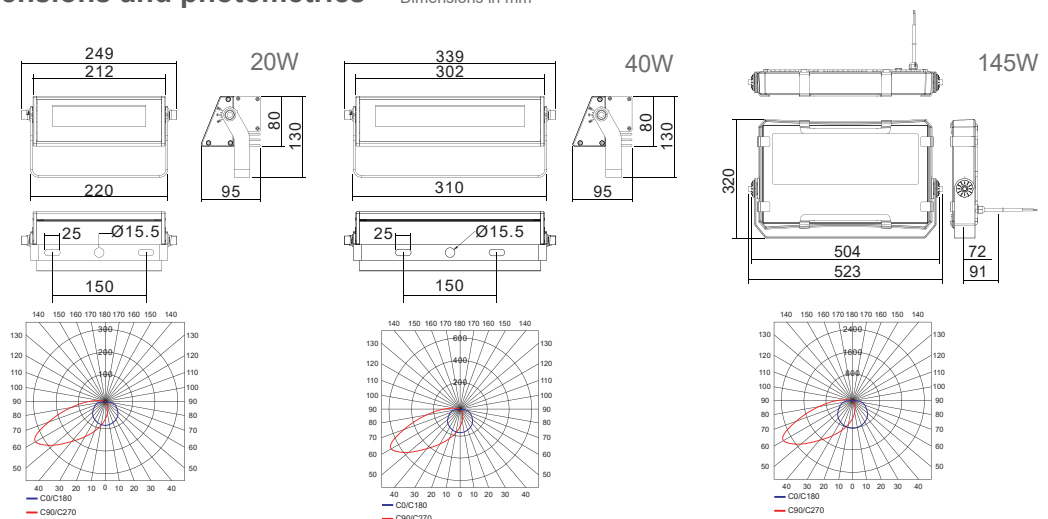


Specifications and parameters

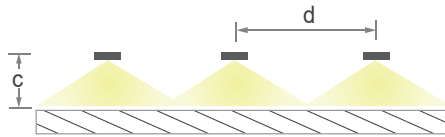
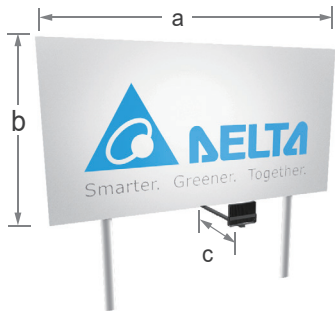
	20W	40W	145W
Power	20W	40W	145W
Color temp. Luminous flux (typ.)	3000K: 1080 lm 4000K: 1200 lm 5000K: 1200 lm	3000K: 2180 lm 4000K: 2400 lm 5000K: 2400 lm	3000K: 9200 lm 4000K: 9200 lm 5000K: 10000 lm
CRI	>80	>80	>80
Weight	2kg	2.6kg	11.5kg
Light angle	120°/105°	120°/105°	120°/105°
Input voltage	100 ~ 240V, 50/60Hz	120 ~ 240V, 50/60Hz	120 ~ 277V, 50/60Hz
Power factor	>90%	>90%	>95%
THD	<20%	<20%	<20%
Material	Aluminum	Aluminum	Aluminum
Cover	Tempered glass	Tempered glass	Tempered glass
LED	CREE	CREE	CREE
Surface treatment	Anti-UV powder painting, color available with RAL# (optional)		
Color	Black	Black	Black
Protection	IP66	IP66	IP66
Operating temp.	-40~+45°C	-40~+45°C	-40~+45°C
Surge protection	L-N:2Kv, L/N-PE:4Kv	L-N:4Kv, L/N-PE:6Kv	IEC 61643 5kA

Dimensions and photometrics

Dimensions in mm



Lamp distance recommendation

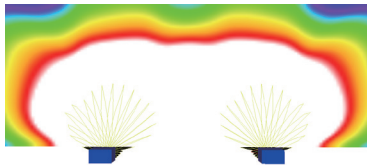


Distance from luminaire to the object
 $a=6, b=3, c=1$

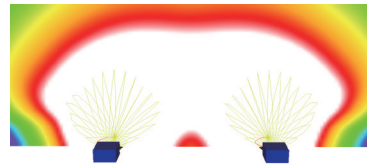
Distance from luminaire to luminaire
 $d \leq 6c$

Installation options

Luminaire installed in parallel to signboard obtains the optimized uniformity



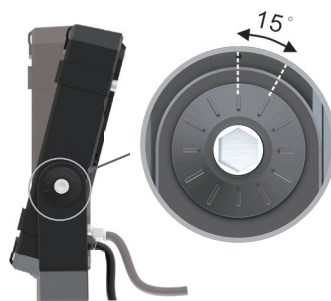
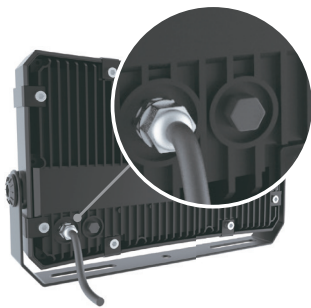
Luminaire tilts angle 0-15° for different uniform light distribution on signboard



NOTE: The illumination area is kept from dust accumulation because of the vertical installation, which supports lower maintenance.

Product Highlight

Luminaire mechanical design



- Protection grade IP66
- Impact protection grade IK08
- IEC 61643 5kA Surge protection
- Waterproof exhaust valve

The waterproof exhaust valve pushes out the humidity caused by the heat from lamp ignition, prevents the dust from entering, and thus enhances reliability.

Lighting effect & simulation

Regular



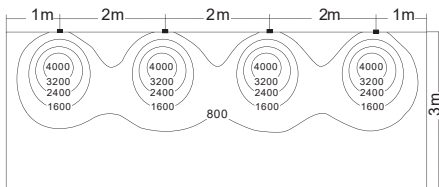
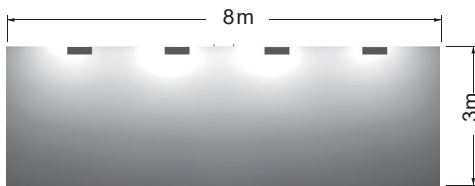
Astra



Outdoor billboard - Large W 8m x H 3m

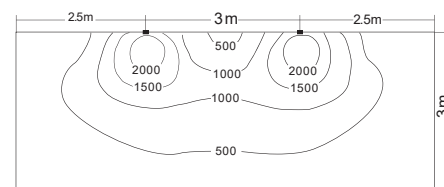
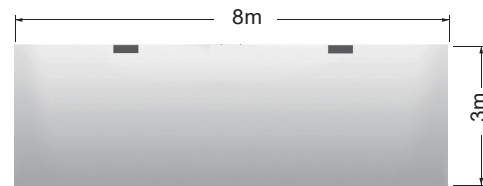
100cm from the billboard

Regular 120W x 4pcs



CCT: 5000 K
 Avg: 1075 lux
 Min: 111 lux
 Max: 4108 lux
 Uniformity: 0.103

Astra 145W x 2pcs

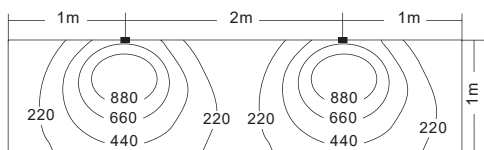
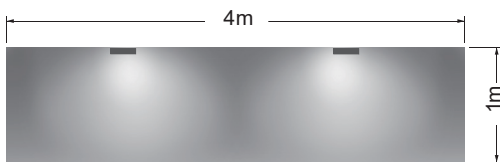


CCT: 5000 K
 Avg: 692 lux
 Min: 169 lux
 Max: 2287 lux
 Uniformity: 0.25

Outdoor billboard/signage - Small W 4m x H 1m

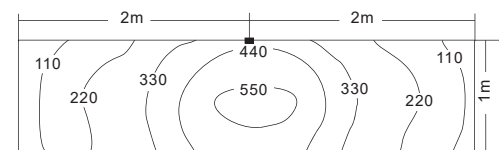
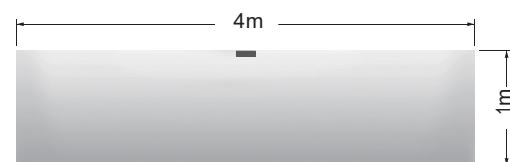
100cm from the billboard

Regular 30W x 2pcs



CCT: 5000 K
 Avg: 390 lux
 Min: 3.35 lux
 Max: 1002 lux
 Uniformity: 0.008

Astra 40W x 1pcs



CCT: 5000 K
 Avg: 317 lux
 Min: 150 lux
 Max: 558 lux
 Uniformity: 0.473



Astra Bollard Module

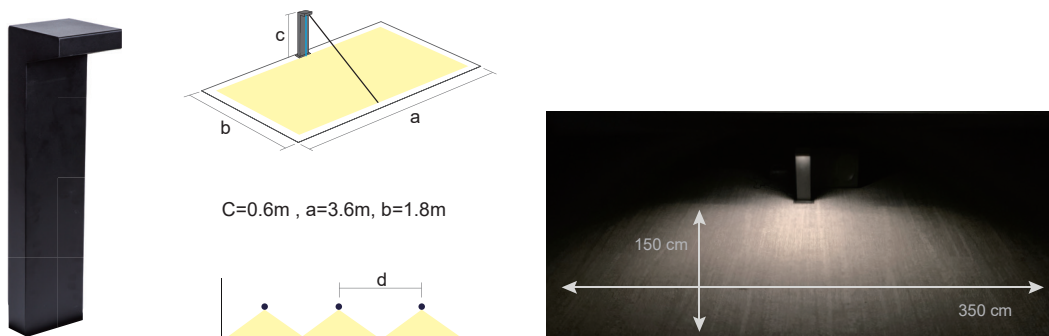
Astra Bollard

Astra Bollard adopts patented Astra optics technique to ensure ample lighting for a wide coverage from reliable and enduring light fixtures for outdoor walkway. The unique forward throw asymmetric light distribution enables deeper and wider illumination on the ground, reducing the number of fixture required and lighting up a pathway while not imposing any glare to pedestrian view sight with low and shield light aperture.

RoHS

CE

Lamp distance recommendation



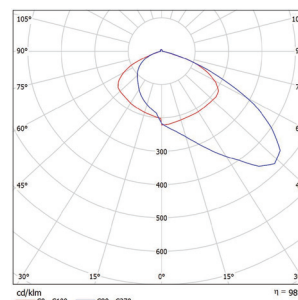
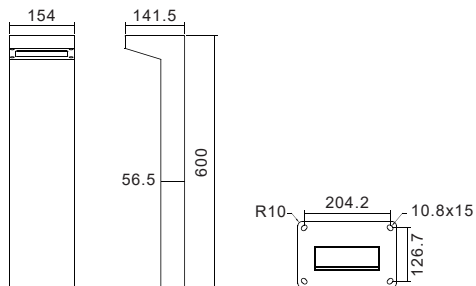
Specifications and parameters

Power	11W
Color temp.	3000K
CRI	>80
Luminus flux (tpy.)	450 lm
Beam angle	120°/105°
Weight	5.5kg
Operating temp.	-10~+40°C
Lamp power factor	>0.5
Instant light	< 1s instant full light
Material	Stainless
Control	on/off
Protection	IP66
Life time	3 years

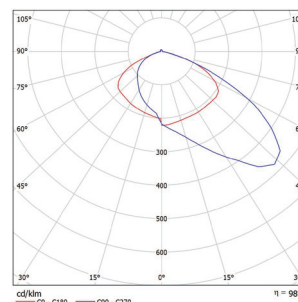
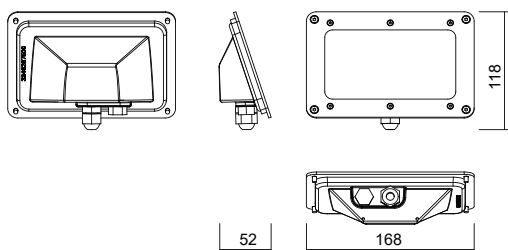
Dimensions and photometrics

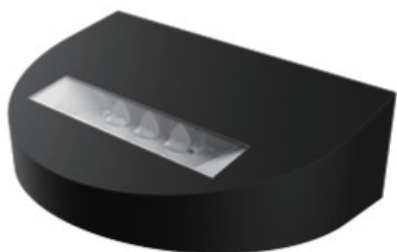
Dimensions in mm

Astra Bollard



Astra Bollard Module



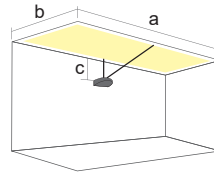


Astra Wall Light

Astra Wall Light adopts patented Astra optics technique to ensure ample lighting for a wide coverage from reliable and enduring light fixtures. The unique forward throw asymmetric light distribution enables a wider illumination to the ceiling for a dark balcony.



Lamp distance recommendation



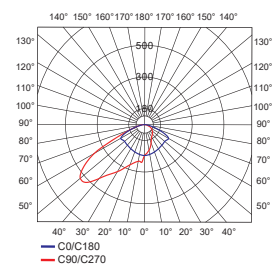
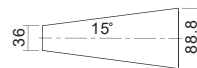
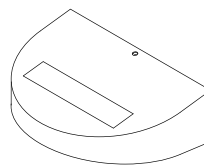
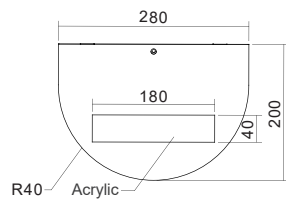
C=0.6m , a=3.6m, b=1.8m

Specifications and parameters

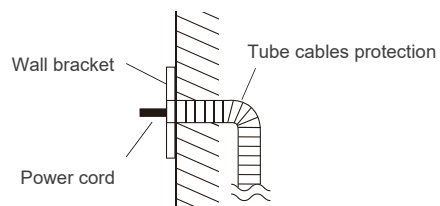
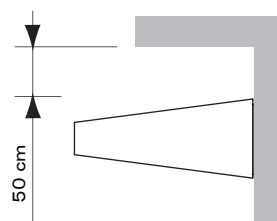
Power	20W
Color temp.	3000K
CRI	>80
Luminus flux (tpy.)	1000 lm
Beam angle	120°/105°
Weight	3kg
Operating temp.	-10~+40°C
Lamp power factor	>0.5
Instant light	<1s instant full light
Material	Stainless
Control	on/off
Protection	IP65
Life time	3 years

Dimensions and photometrics

Dimensions in mm



Installation



夫地之廣也，非徒廣於地而已，亦廣於天。天者，地之靈也。地者，天之質也。天地之間，氣之所歸，靈之所聚。故君子居之，必先慎乎德。德薄而土不厚，土不厚而水不流，水不流而木不生，木不生而民不聚。民不聚而國不立，國不立而天下不歸。此理之必然也。故君子必先慎乎德，德有餘而土自厚，土自厚而水自流，水自流而木自生，木自生而民自聚。民自聚而國自立，國自立而天下歸。此理之必然也。故君子必先慎乎德，德有餘而土自厚，土自厚而水自流，水自流而木自生，木自生而民自聚。民自聚而國自立，國自立而天下歸。此理之必然也。

This wall is 5.8m wide, 2.2m high.

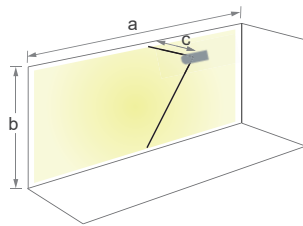


Astra Indoor Flood Light

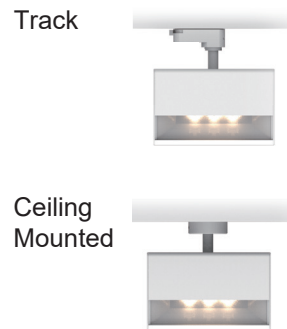
Astra Indoor Flood Light delivers an ultra-wide angle lighting distribution with its patented asymmetric photometric design. Sophisticated photometrics optimize its efficiency and uniformity while reducing the number of luminaires required.



Lamp distance recommendation



For uniform illuminance
a=6, b=3, c=1

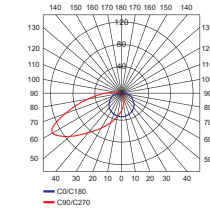
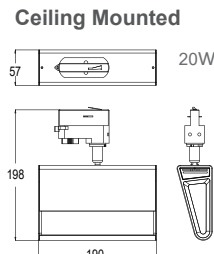
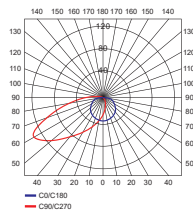
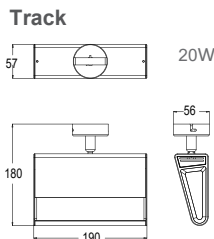


Specifications and parameters

Power	20W
Color temp.	3000K: 1020 lm
Luminous flux (typ.)	4000K: 1150 lm
	5000K: 1150 lm
CRI	90
Beam angle	120°/105°
Weight	920g
Operating temp.	20~+40°C
Lamp power factor	>0.9
Material	Aluminun
Color	White / Black
Cover	Glass
Control	on/off

Dimensions and photometrics

Dimensions in mm



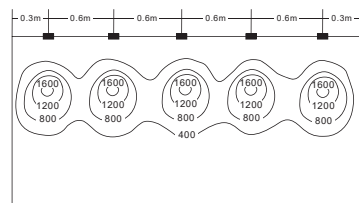
Lighting effect & simulation

Poster W 3m x H 1.5m

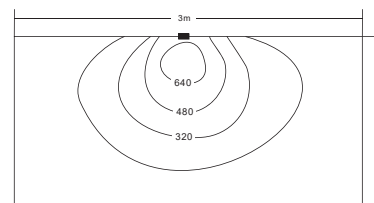
70cm from the wall

Regular 12W x 5pcs

Astra 20W x 1pc



CCT: 4000 K
Avg: 367 lux
Min: 34 lux
Max: 1654 lux
Uniformity: 0.103



CCT: 4000 K
Avg: 210 lux
Min: 352 lux
Max: 772 lux
Uniformity: 0.261

AMECO

Delta Electronics, Inc.

186 Ruey Kuang Road, Neihu, Taipei 11491, Taiwan, R.O.C.

TEL : +886 2 8797 2088

FAX : +886 2 6606 3308

Email: LS.Sales@deltaww.com

Version 2_202310

All specifications are subject to change without notice. Copyright © Delta Electronics, Inc. All rights reserved.