

DELTA D-BOT SERIES

Collaborative Robots **Built to Fit Your Workflow**





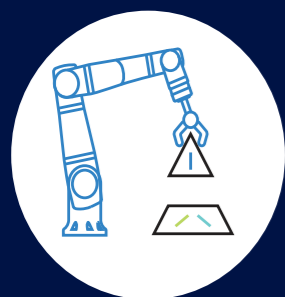
THE DELTA D-BOT SERIES

As Europe faces a decline in its blue-collar workforce, the need to integrate advanced technology with human talent becomes crucial. The award-winning D-Bot series was created to tackle this challenge, designed to perform repetitive and precise tasks, allowing skilled workers to focus on higher-value work. Built and engineered in Europe, D-Bots reflect a vision where automation enhances human capabilities rather than replacing them, paving the way for smarter and more efficient workflows.

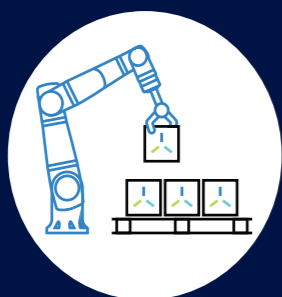
The D-Bot series integrates seamlessly into existing operations, offering businesses the ability to quickly deploy robots that enhance productivity without disrupting daily tasks. By automating routine jobs, employees can concentrate on more strategic responsibilities, making their roles more impactful. Companies that have adopted D-Bots are already benefiting from improved precision, reduced labor costs, and maintained productivity standards.

As adoption continues to grow, D-Bots are poised to reshape the future of smart factory automation. With their ability to take on repetitive tasks, these robots allow workers to engage in more innovative and problem-solving activities. Designed and built in Europe, D-Bots are helping businesses stay competitive and lead the way in sustainable automation.

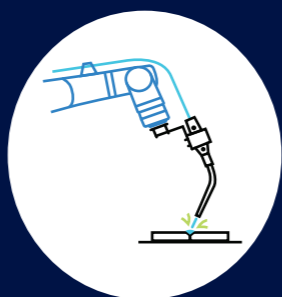
ACROSS INDUSTRIES



Assembly



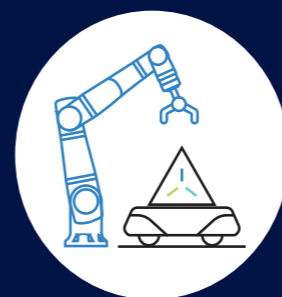
Packaging



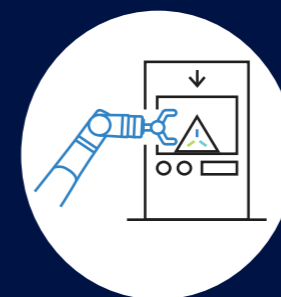
Welding



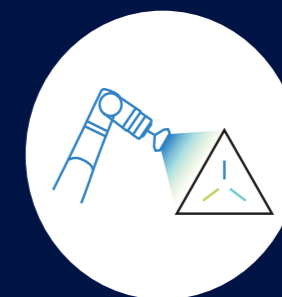
Material
Handling



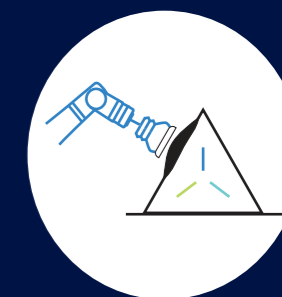
Transportation



Machine
Tending



Quality
Inspection



Finishing

KEY FEATURES



High Payload

6 to 30 kg



Maximized Reach

800 to 1800 mm



Consistent Accuracy

± 0.02 mm



Enhanced Speed

max. 2 - 3 m/s



Safety Features

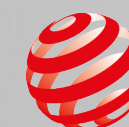
Pld Cat. 3 / SIL 3



D-Bot Weight

24 to 101 kg





reddot winner 2024
best of the best



D-BOT SERIES

Technical Parameters

DC06



DC08



DC10



DC16



DC20



DC30



Specifications

Payload	6 kg (13.3 lbs)	8 kg (17.7 lbs)	10 kg (22.1 lbs)	16 kg (35.3 lbs)	20 kg (44.1 lbs)	30 kg (66.2 lbs)
Reach	800 mm (31.5 in)	1300 mm (51.2 in)	1200 mm (47.3 in)	1600 mm (63 in)	1800 mm (70.1 in)	1300 mm (51.2 in)
Degrees of Freedom	6 rotary joints	6 rotary joints	6 rotary joints	6 rotary joints	6 rotary joints	6 rotary joints

Environment & Safety

Ambient Temperature	Ambient temperature: 0° to 40°C (32° to 104°F)			Ambient temperature: 0° to 40°C (32° to 104°F)		
IP Classification	IP66 dust/waterproof	IP66 dust/waterproof	IP66 dust/waterproof	IP66 dust/waterproof	IP54 dust/splashproof	IP66 dust/waterproof
Safety Rating	PLd Cat3. / SIL 2 (Safe position, speed, torque limits, I/Os)			PLd Cat3. / SIL 2 (Safe position, speed, torque limits, I/Os)		
Safety Functions	20 configurable safety functions			20 configurable safety functions		

Performance

Max. TCP Speed	2 m/s		3 m/s		3 m/s		3 m/s		3 m/s		3 m/s	
Pose Repeatability	±0.02 mm		±0.02 mm		±0.02 mm		±0.03 mm		±0.03 mm		±0.05 mm	
Axis Movement	Working range	Maximum speed	Working range	Maximum speed	Working range	Maximum speed	Working range	Maximum speed	Working range	Maximum speed	Working range	Maximum speed
Axis 1	±180°	200°/s	±180°	130°/s	±180°	130°/s	±180°	120°/s	±180°	120°/s	±180°	120°/s
Axis 2	±180°	200°/s	±180°	130°/s	±180°	130°/s	±180°	120°/s	±180°	120°/s	±180°	120°/s
Axis 3	±120°	200°/s	±120°	200°/s	±120°	200°/s	±120°	200°/s	±120°	120°/s	±120°	120°/s
Axis 4	±150°	200°/s	±150°	200°/s	±150°	200°/s	±150°	200°/s	±150°	120°/s	±150°	120°/s
Axis 5	±180°	230°/s	±180°	220°/s	±180°	200°/s	±180°	200°/s	±180°	180°/s	±180°	180°/s
Axis 6	±180°	230°/s	±180°	220°/s	±180°	200°/s	±180°	200°/s	±180°	180°/s	±180°	180°/s

Interfaces & Programming

Interfaces at the Flange	I/Os Ports, Modbus RTU			I/Os Ports, Modbus RTU		
I/O Ports						
Digital In	3	3	3	3	3	3
Digital Out	3	3	3	3	3	3
Analog In	2	2	2	2	2	2
I/O power supply voltage	24V	24V	24V	24V	24V	24V
I/O power supply	1A	1A	1A	1A	1A	1A
Programming Interface	Drag & Drop, Python, C#, C++, ROS 1, ROS 2			Drag & Drop, Python, C#, C++, ROS 1, ROS 2		

Physical

Weight	24 kg (53 lbs)	40 kg (88 lbs)	39 kg (86 lbs)	70 kg (154 lbs)	101 kg (223 lbs)	98 kg (216 lbs)
Mounting	Omnidirectional, including table mounting, wall mounting, and ceiling mounting			Omnidirectional, including table mounting, wall mounting, and ceiling mounting		
Material	Aluminum, plastic, steel			Aluminum, plastic, steel		



Control Box

Dimensions	493 mm x 470 mm x 243 mm
Weight	20 kg (44.1 lbs)
Power Supply	100-240 VAC, 50/60 Hz, max. 1 kW (for DC30 max. 2 kW)
Interface	EtherNet/IP, ModbusTCP, USB 3.0, Safe I/Os
Additional Hardware (HW)	OPC UA, Profinet, EtherCAT



Teach Pendant

Dimensions	300 mm x 245 mm x 133 mm
Resolution	2560 x 1600 px
Cable Length	5 m (3.3 ft)

REFLEX SAFETY & IP66 CERTIFICATION

D-Bots feature innovative reflex technology that halts movement instantly upon contact, safeguarding both personnel and equipment. With IP66 certification for dust and water resistance, plus customizable speed settings for specific tasks, they ensure reliable performance in any environment.



NVIDIA OMNIVERSE INTEGRATION



NVIDIA Omniverse™ and NVIDIA Isaac Sim™ offer seamless real-to-sim and sim-to-real synchronization as an option for D-Bot users. This allows customers to test and optimize robotic functions before deployment, improving efficiency, speeding up development, and providing risk-free validation in a virtual environment. Additionally, the D-Bot Digital Twin's Prediction & Avoidance System boosts safety with real-time Human Detection and Collision Avoidance.



ROBOT SYSTEM SET-UP IN 1 HOUR

Explore the full range of D-Bot automation solutions.



01 Robot Arm

Featuring six axes, the arm delivers precise movement, ensuring flexibility and accuracy across a wide range of applications.

02 Teach Pendant

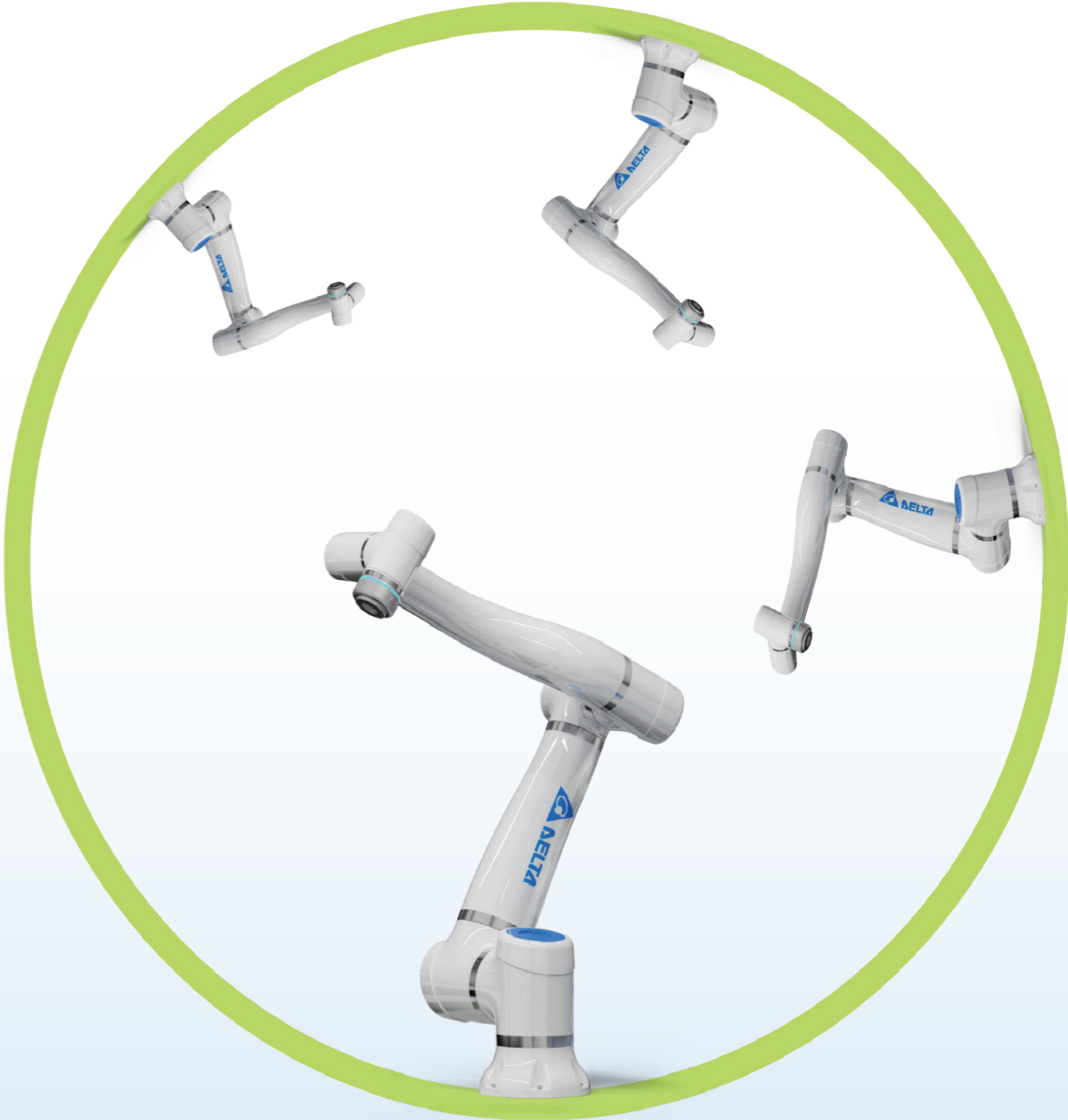
Offers an intuitive programming interface with Drag & Drop, Python, C# C++, ROS 1 ROS 2 support, enabling seamless and flexible control.

03 Control Box

Provides a versatile interface with EtherNet/IP, ModbusTCP, Profinet, USB 3.0, and Safe I/Os, ensuring reliable communication and safety for diverse applications.

OMNIDIRECTIONAL MOUNTING

Our cobots are designed with versatile mounting capabilities, enabling installation in any orientation - upright, sideways, or even overhead. This flexibility ensures seamless integration into diverse workspaces.



Renowned for delivering some of the industry's most energy-efficient power products, Delta boasts achievements such as switching power supplies with over 90% efficiency, telecom power systems reaching up to 98%, and PV inverters that achieve up to 99.2% efficiency. Notably, Delta pioneered the world's first server power supply to receive the 80 Plus Titanium certification, setting a new benchmark for energy efficiency.

Delta's excellence has been recognized worldwide, earning numerous awards for innovation, design, and its unwavering commitment to Environmental, Social, and Governance (ESG) principles. Delta has been featured on the Dow Jones Sustainability™ Indices World Index for 13 consecutive years since 2011 and has thrice been awarded a double A List rating by CDP for its significant contributions to combating climate change and enhancing water security.

PUBLICATION INFORMATION

© Delta Electronics 2025
All rights reserved.

COPYRIGHT INFORMATION

For further details, contact:
sales.IA.D-Bot@deltaww.com

For the latest news about Delta Electronics,
visit our website at:
www.delta-emea.com/en-GB/index

For the latest news about the D-Bots,
visit our website at:
www.delta-emea.com/en-GB/landing/Cobot

DELTA ELECTRONICS EMEA LOCATIONS

EMEA Headquarters: Delta Electronics (Netherlands) B.V.
Sales: Sales.IA.EMEA@deltaww.com
Marketing: Marketing.IA.EMEA@deltaww.com
Technical Support: iatechnicalsupport@deltaww.com
Customer Support: Customer-Support@deltaww.com
Service: Service.IA.emea@deltaww.com
TEL: +31(0)40 800 3900

BENELUX: Delta Electronics (Netherlands) B.V.
Automotive Campus 260, 5708 JZ Helmond,
The Netherlands
Mail: Sales.IA.Benelux@deltaww.com
TEL: +31(0)40 800 3900

France: Delta Electronics (France) S.A.
2 Rue du 19 Mars 1962, 65000 Tarbes, France
Mail: Sales.IA.FR@deltaww.com
TEL: +33(0)1 69 77 82 60

Iberia: Delta Electronics Solutions (Spain) S.L.U
Ctra. De Villaverde a Vallecas, 265 1º Dcha Ed.
Hormigueras - P.I. de Vallecas 28031 Madrid
TEL: +34(0)91 223 74 20

Carrer Llacuna 166, 08018 Barcelona, Spain
Mail: Sales.IA.Iberia@deltaww.com

Italy: Delta Electronics (Italy) S.r.l.
Via Meda 2-22060 Novedrate(CO)
Piazza Grazioli 18 00186 Roma Italy
Mail: Sales.IA.Italy@deltaww.com
TEL: +39 039 8900365

Turkey: Delta Greentech Elektronik San. Ltd. Sti. (Turkey)
Serifali Mah. Hendem Cad. Kule Sok. No: 16-A
34775 Ümraniye - istanbul
Mail: Sales.IA.Turkey@deltaww.com
TEL: + 90 216 499 9910

MEA: Eltek Dubai (Eltek MEA DMCC)
OFFICE 2504, 25th Floor, Saba Tower 1, Jumeirah Lakes Towers,
Dubai, UAE
Mail: Sales.IA.MEA@deltaww.com
TEL: +971(0)4 2690148