

# Greenhouse Gas Verification Statement

The inventory of Greenhouse Gas emissions in year 2019 of

## Delta Electronics, Inc.

No.186, Ruiguang Rd., Neihu Dist.,  
Taipei City 114, Taiwan, R.O.C.



has been verified in accordance with ISO 14064-3:2006

Scope 3: Other indirect emissions  
**302,292.475 tonnes of CO<sub>2</sub>e**

Authorized by

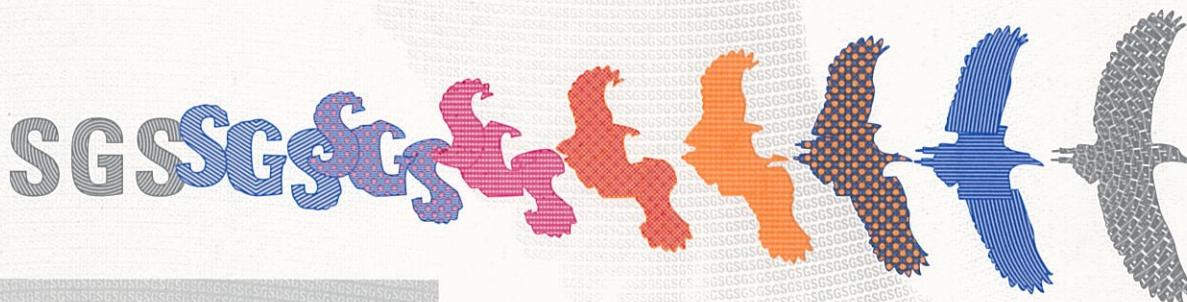
David Huang  
Senior Director

Date: 17 May 2020

Version 1

TGP 56A-15-2 2001  
SGS Taiwan Ltd.

No. 136-1, Wu Kung Road, New Taipei Industrial Park, Wu Ku District,  
New Taipei City 24803, Taiwan  
t (02) 22993279 f (02)22999453 www.sgs.com



Statement TW20/00121GG, continued

Target	Scope 3: Other indirect emissions	
Bondary	This is a multi-site certificate, additional site details are listed in Appendix A.	
Data Period	From 01 January 2019 to 31 December 2019	
Category	Description	Emissions (tonnes of CO <sub>2</sub> e)
01 Purchased goods and services	The carbon dioxide emissions from products that purchase suppliers' goods and services: <ul style="list-style-type: none"> <li>· Switching Power Supply for Delta Storage System / one piece (including pack): ECD55020002 · TDPS-800FB A (Manufactured in Thailand)</li> <li>· DCDC Module for EV Powertrain / one piece (including pack): ECD21050002 (Manufactured in Thailand)</li> <li>· High Efficiency Rectifier Modules / one set (including pack): ESR-48/56B F c (Manufactured in China and Thailand)</li> </ul>	13,274.0875
05 Waste generated in operations	The carbon dioxide emitted by waste generated in operation, includes: waste removal and treatment and wastewater treatment processes. <ul style="list-style-type: none"> <li>· Waste removal and treatment: <ul style="list-style-type: none"> <li>■ Taoyuan plant 1 · Taoyuan plant 2</li> <li>■ CYNTEC Co., Ltd.</li> </ul> </li> <li>· Wastewater treatment: <ul style="list-style-type: none"> <li>■ Taoyuan plant 1 · Taoyuan plant 2</li> <li>■ CYNTEC Co., Ltd.</li> </ul> </li> </ul>	94.1291 170.2266 16.3860 47.7411
06 Business Travel	The business travel of employee in Taiwan.	4,823.2232
11 Use of sold products	The carbon dioxide emissions from the use of four products sold. <ul style="list-style-type: none"> <li>· LED Street Light</li> <li>· Server Power</li> <li>· Ventilating Fans</li> <li>· AC-DC Adaptor</li> </ul>	1,114.6273 202,960.8311 13,846.0564 59,703.0608
13 Downstream leased assets	The carbon dioxide emissions from category 1 and category 2 of downstream leased assets in the Pingjhen plant, Taiwan.	6,242.1059

**Reference**

- The definition of 15 categories are based on the “ GHG Protocol -- Corporate Value Chain (Scope 3) Accounting and Reporting Standard”, which initiative by the World Resources Institute (WRI) and the World Business Council for Sustainable Development (WBCSD)
- The IPCC 2013 AR5 GWP values are applied in this inventory.

Statement TW20/00121GG, continued

- Electricity emission factor: 0.533 kgCO<sub>2</sub>e/kwh  
(Announced by Bureau of Energy, Ministry of Economic Affairs in 2019)
- The emission factor calculated for
  - EPA Carbon Footprint Calculation Platform
  - EPA Greenhouse Gas Emission Factor Management Table 6.0.4
  - Simapro 8.2.0 (Ecoinvent 3.0), Simapro 8.4.0(Ecoinvent 3.3), IPCC 2013 GWP 100av1.02.
  - ICAO Carbon Emissions Calculator (v10\_2017).
  - Use of sold products: Product has been confirmed by PwC in 23 April 2020.

**Confidentiality**

The statement may contain relevantly confidential information of the clients. In addition to being submitted as governmental application or certification documents, the statement are not allowed to be edited, duplicated, or published without the clients' agreement in written form.

**Avoidance of Conflict of Interest**

The statement is completely complied with the standards and procedures that related-authorities established and the auditing process is conduct with fairness and honesty.

Note: This Statement is issued, on behalf of Client, by SGS Taiwan Ltd. ("SGS") under its General Conditions for Greenhouse Gas Verification Services available at [http://www.sgs.com/terms\\_and\\_conditions.htm](http://www.sgs.com/terms_and_conditions.htm). The findings recorded hereon are based upon an audit performed by SGS. This Statement does not relieve Client from compliance with any bylaws, federal, national or regional acts and regulations or with any guidelines issued pursuant to such regulations. Stipulations to the contrary are not binding on SGS and SGS shall have no responsibility vis-à-vis parties other than its Client.

**Appendix A**

Site	Address
Delta Electronics, Inc. (Taipei Headquarters)	186 Ruey Kuang Rd., Neihu, Taipei 11491, Taiwan, R.O.C.
Delta Electronics, Inc. (Taipei Yangguang)	256 Yangguang Road, Neihu, Taipei 11491, Taiwan, R.O.C.
Delta Electronics, Inc. (Taoyuan plant 1)	31-1 Xingbang Road, Guishan Industrial Zone, Taoyuan City 33370, Taiwan, R.O.C.
Delta Electronics, Inc. (Taoyuan plant 2)	1F., 3F., 5~7F., No.252, Shanying Rd., Guishan Dist., Taoyuan City 333, Taiwan, R.O.C.
Delta Electronics, Inc. (Taoyuan R&D Center)	No.18, Xinglong Rd., Taoyuan District, Taoyuan City 33068, Taiwan, R.O.C.
Delta Electronics, Inc. (Taoyuan plant 5)	No.268, Shanying Rd., Guishan Dist., Taoyuan City 333, Taiwan, R.O.C.
Delta Electronics, Inc. (Tainan Phase I and II)	39 Section 2, Huandong Road, Shanhua District, Tainan City 74144, Taiwan, R.O.C
Delta Electronics, Inc. (Chungli Plant 1)	No. 3, Dongyuan Rd., Zhongli Dist., Taoyuan City 320, Taiwan (R.O.C.)
Delta Electronics, Inc. (Chungli Plant 2)	No. 4 Nanyuan Rd., Chungli Industrial Zone, Taoyuan City 32063, Taiwan, Taiwan (R.O.C.)
Delta Electronics, Inc. (Pingjhen plant)	458 Pingjhen Section, Jhongsing Road, Pingjhen District, Taoyuan City 32560, Taiwan, R.O.C.
CYNTEC Co., Ltd	No.2, R&D Rd. II, Hsinchu Science Park, Hsinchu City 300, Taiwan, R.O.C.
Delta Electronics (Jiangsu) Ltd. (Wujiang Plant)	1688, Jiangxing East Rd., Wujiang Eco & Tech Development Zone, Wujiang City, Jiangsu., P.R.C. 215200
Delta Electronics (Thailand) Public Co., Ltd. (DET Plant 1)	714 Soi E5, Moo 4, Bangpoo Industrial Estate (E.P.Z), Pattana 1 Rd., Tambon Phraksa, Amphur Muang, Samutprakarn 10280, Thailand
Delta Electronics (Thailand) Public Co., Ltd. (DET Plant 5)	909 Soi 9, Moo 4, Bangpoo Industrial Estate (E.P.Z), Pattana 1 Rd., Tambon Phraksa, Amphur Muang, Samutprakarn 10280, Thailand