



Industry Notification - Agriculture Industry

Delta Pig Farm Breeding VTScada Monitoring System Solution

IABG Global Solution Center
Nov., 2021

Delta Pig Farm VTScada Monitoring System Solution

Introduction

With the rapid spreading of informatization over various industries, the pig breeding industry is also heading towards large-scale and intensive production. However, lack of information management platform is one issue facing the breeding industry and how to improve its informatization is becoming increasingly urgent.

Delta Pig Farm Breeding Monitoring System solution is an information management platform designed for pig breeding enterprises. This system manages subsystems centrally, including information, access control system, environmental control system, intelligent watering and feeding, atomization system, excrement treatment, high pressure cleaning and video surveillance system, for efficient pig farm management.

Application

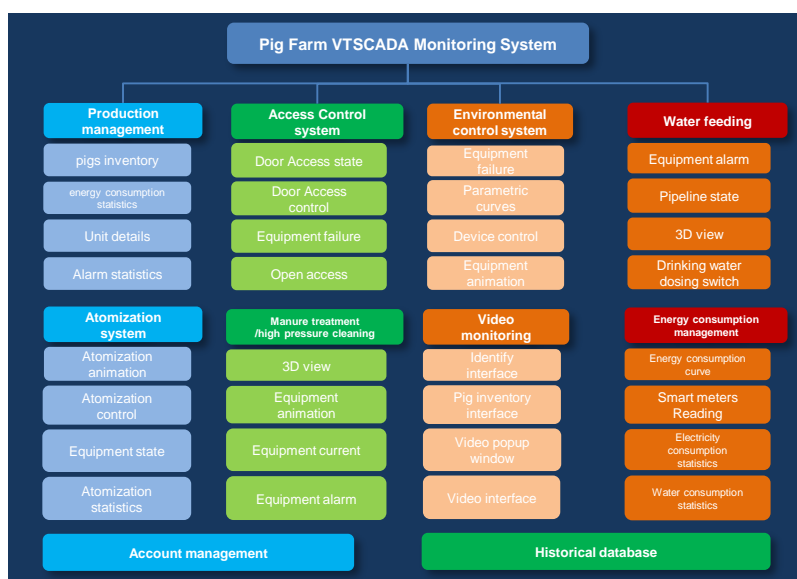
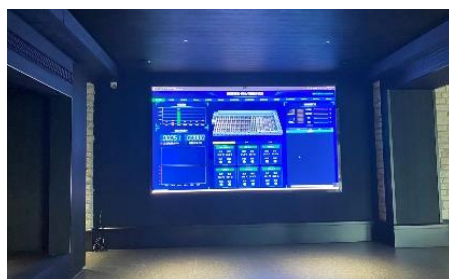
This solution mainly applies in informatization construction of large-scale pig farms.

Principle

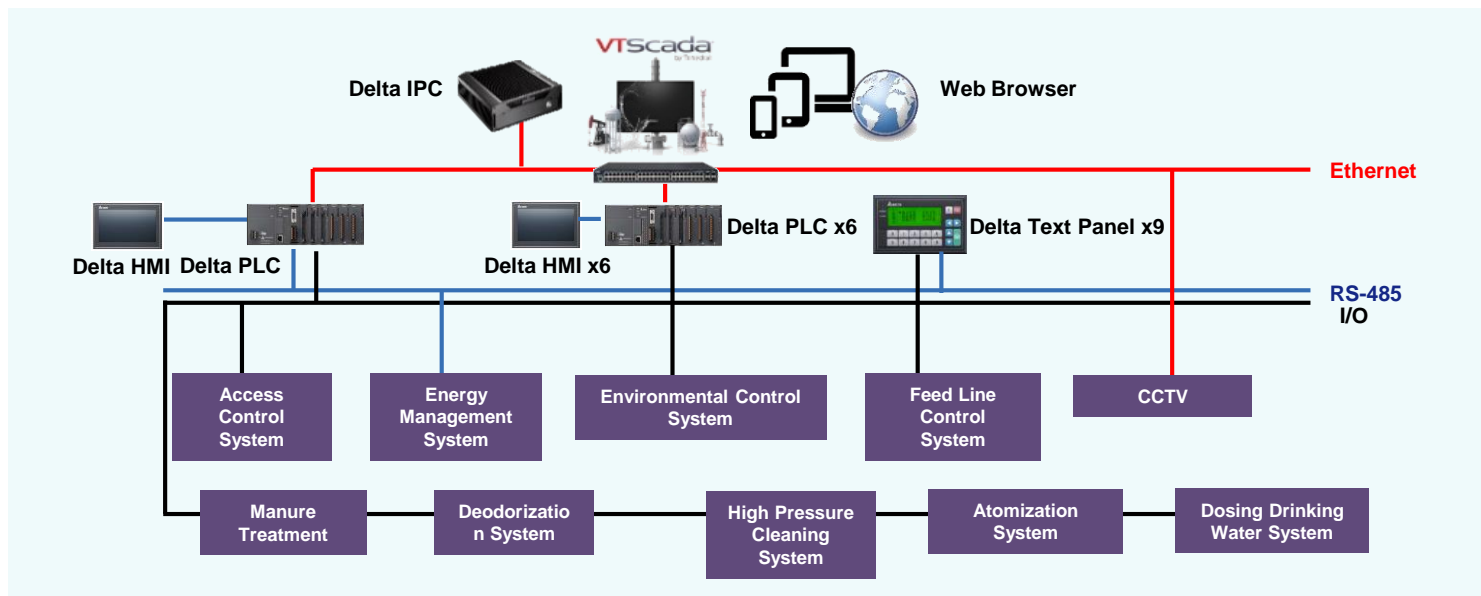
VTScada is an instant, intuitive and flexible SCADA software. It provides a full-featured vision platform which is capable of monitoring hundreds to millions of IOs on server. PLC collects parameters from subsystems via Modbus and Modbus/TCP protocol; VTScada communicates with the PLC on site, and presents pig farm information intuitively.

In addition, it also allows users to view pig farm data, alarms and historical data remotely through client, Web browser and Android app, so that to spot problems timely and improve pig farm informatization and management.

Architecture



Solution Architecture



Features and Advantages

High-efficiency Management

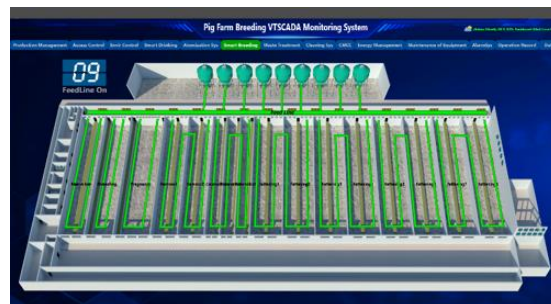
- Integrates critical system information from each subsystem in the pig farm for statistics and analysis, improving management efficiency.
- Multi-level account permission management for standardized operation process.
- Alarms are pushed to web side and app timely to reduce risk.
- B/S architecture supports multiple clients, allowing users to manage projects from remote locations, such as meeting room and central control room.

Real-Time System Monitoring

- Present critical system information with numbers, status, profiles and figures to make the project status clear at a glance.
- Display real-time alarm messages and statistics for immediate handling of emergencies.

Historical Data Trace

- Excellent database structure makes it possible to trace historical data, alarms, operation records and login information all the time.



Delta Electronics, Inc.

IABG

No. 18, Xinglong Road, Taoyuan District, Taoyuan City

TEL: 886-3-3626301

FAX: 886-3-3716301

www.deltaww.com